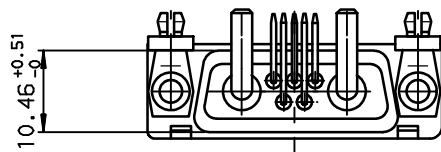
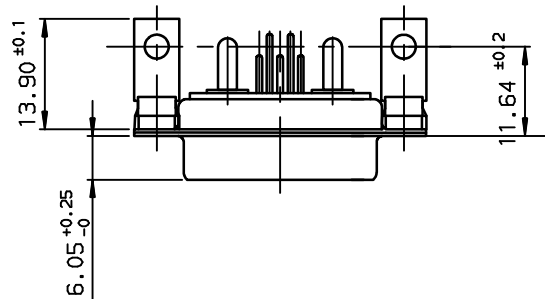
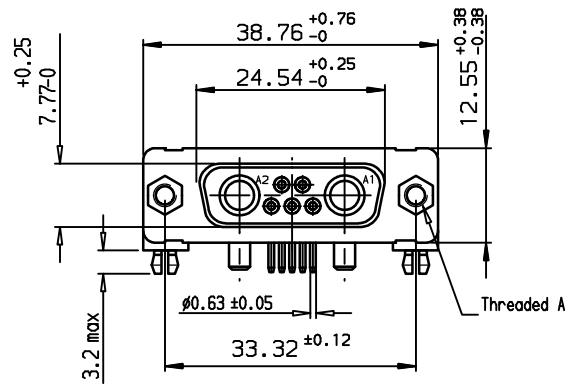
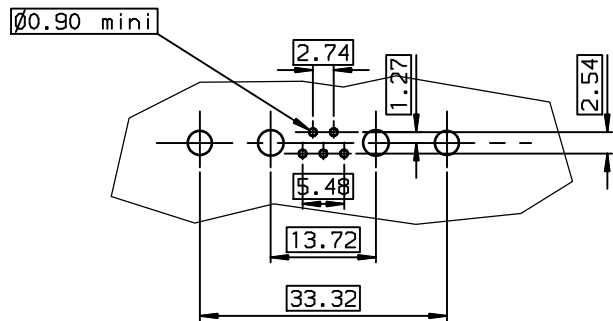




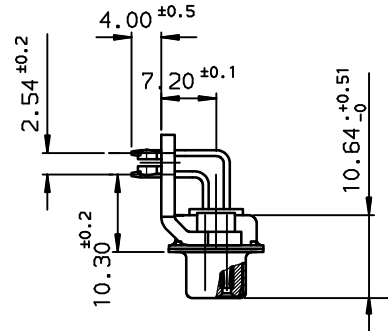
Copyright FCI.



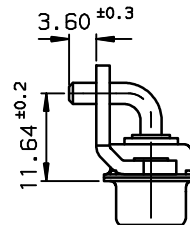
LAYOUT DIMENSIONS (after plating)
CONNECTOR SIDE VIEW



VIEW WITHOUT POWERS
CONTACTS



VIEW WITH POWERS
CONTACTS



TIN LEAD PART NUMBER




DA07W2S500G30	UNC 4.40
DA07W2S500G40	UNC 4.40
DAL7W2S500G30	M3
DAL7W2S500G40	M3
PART NUMBER	Threaded A

LEAD FREE PART NUMBER

DA07W2S500G30LF	UNC 4.40
DA07W2S500G40LF	UNC 4.40
DAL7W2S500G30LF	M3
DAL7W2S500G40LF	M3
PART NUMBER	Threaded A

GENERAL CHARACTERISTICS AND ROHS INFORMATIONS:
SEE DRAWING C01-8639-0000

European Views

www.fciconnect.com			surface ISO 1302		tolerance std ISO 406 ISO 1101		projection 		mm 		
			TOLERANCES UNLESS OTHERWISE SPECIFIED								
Dr	JARRY	1996/03/26	ANGULAR	LINEAR	0.X	±0.1	size	A3	Scale	1.5	
Eng	PESSON	1996/03/26			0.XX	±0.1					
Chr	LEGARE	1996/03/26			0.XXX	±0.1	ECN		LS06-0095		
Appr	LEGARE	1996/03/26	Product family				D-SUB	Spec ref -			
			title SOCKET CONNECTOR RIGHT ANGLED WITH POWERS CONTACTS				dwg no C01-8639-0609			Rev. D	
			catalog no				-		CUSTOMER		sheet 1 of 1

rev	ecn no	dr	date
B	-	BAR	2003/11/03
C	LS05-001	MPE	2005/03/07
D	LS06-0095	LGO	2006/07/19
-	-	-	-
-	-	-	-
-	-	-	-
-	-	-	-

REV F - 2006-04-17