

REFERENCE SPECIFICATIONS

-NFC 93425 (in compliance with HE 507)

PHYSICAL CHARACTERISTICS

-INSULATOR MATERIAL: THERMOPLASTIC UL94V0

-CONTACT MATERIAL: BRASS
GOLD OVER NICKEL

-ACCESSORIES: STEEL FOR BRACKETS
Cadmium plated, yellow passivation

-SHELLS: STEEL
Cadmium plated, yellow passivation

ELECTRICAL CHARACTERISTICS

-NOMINAL CURRENT: 7.5A (SIGNAL CONTACT)

-CONTACT RESISTANCE: ≤ 7.3 m Ohms(SIGNAL)

-CONTACT/CONTACT : ≥ 1000 V

-CONTACT/GROUND : ≥ 1200 V

-INSULATION RESISTANCE: ≥ 5000 MOhms

ENVIRONMENTAL CHARACTERISTICS

- CLIMATIC CATEGORY: 55/125/21

TEMPERATURE RANGE -55°C TO +125°C

DAMP HEAT STEADY STATE 56 DAYS

SALT SPRAY 48 HOURS

Series

DBML13W3P500MN

Shell size: **E A B C D**
(see sheet 3)

M :Characteristics
for the DM serie

Front accessory definition
(see sheet 2)

blank :without accessory

L :threaded insert M3

O :threaded insert UNC 4-40

V :female screw UNC 4-40

Layout of contacts (see sheet 3)

Contacts

P :Pin

Termination type

5 Right angle/Europe standard

Plating

00 Right angle 500 matings/unmatings

43 Right angle 500 matings/unmatings
for harsh environment

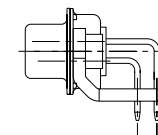
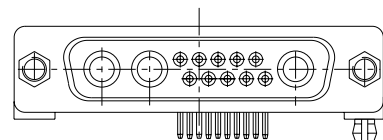
PCB accessories definition(see sheet 2)

blank :Plastic brackets

C :Without brackets

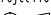


M :Metal brackets

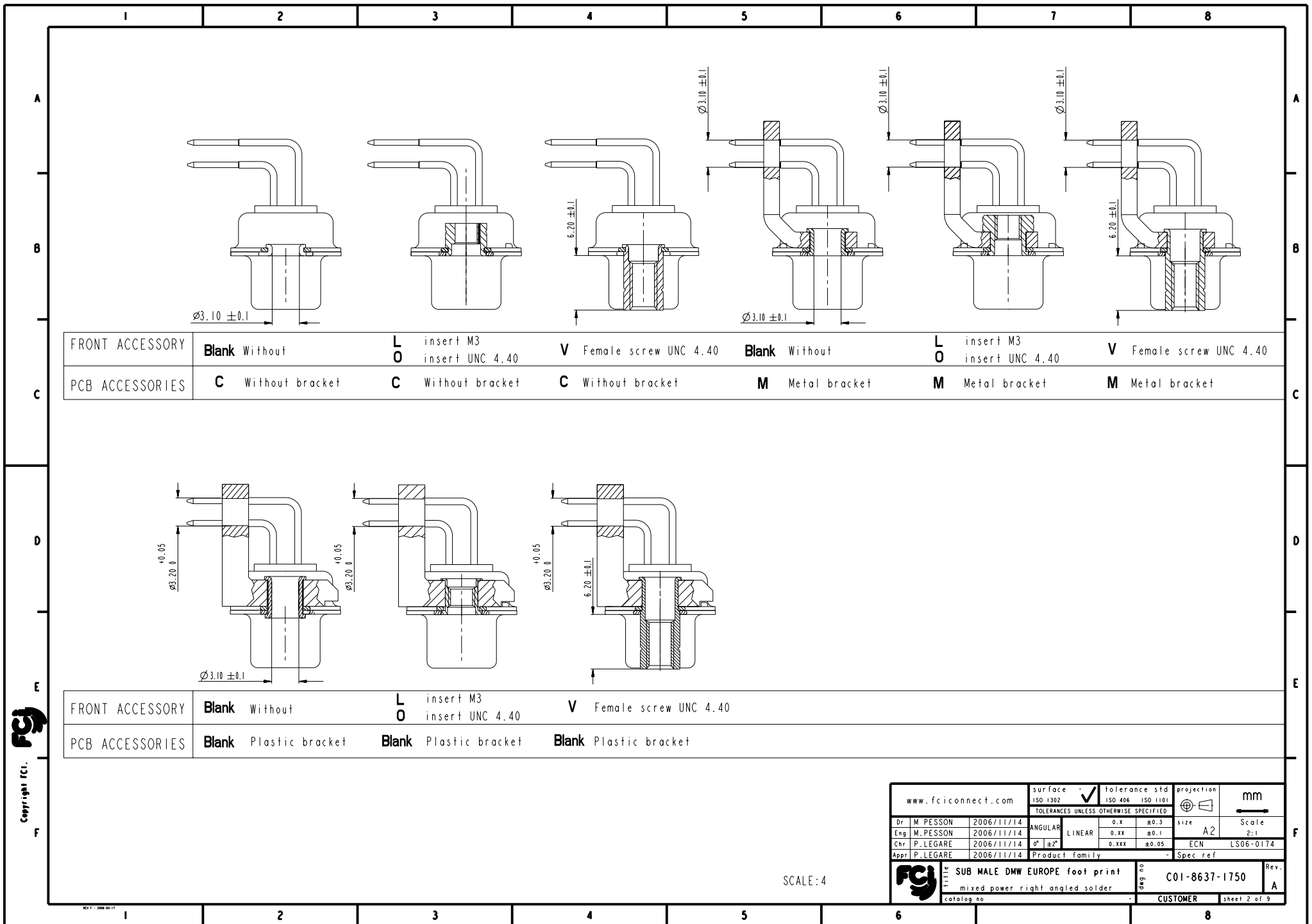
N :Obligatory indication for HE 507



13W3 FOR EXAMPLE

rev	ech no	dr	date
A	306-0174	MPE	2006/11/14
-	-	-	-
-	-	-	-
-	-	-	-
-	-	-	-
-	-	-	-
-	-	-	-
-	-	-	-
-	-	-	-
-	-	-	-

www.fciconnect.com			surface - <input checked="" type="checkbox"/> tolerance std ISO 1302 ISO 406 ISO 1101						
TOLERANCES UNLESS OTHERWISE SPECIFIED									
Dr	M. PESSON	2006/11/14	ANGULAR	LINEAR	0.X	±0.3	size	A2	Scale
Eng	M. PESSON	2006/11/14			0.XX	±0.1			2:1
Chr	P. LEGARE	2006/11/14	0° ±2°		0.XXX	±0.05	ECN	LS06-0174	
Appr	P. LEGARE	2006/11/14	Product family				- Spec ref		
			TITLE SUB MALE DMW EUROPE foot print mixed power right angled solder				deg no C01-8637-1750		Rev. A
catalog no.							CUSTOMER		sheet 1 of 4



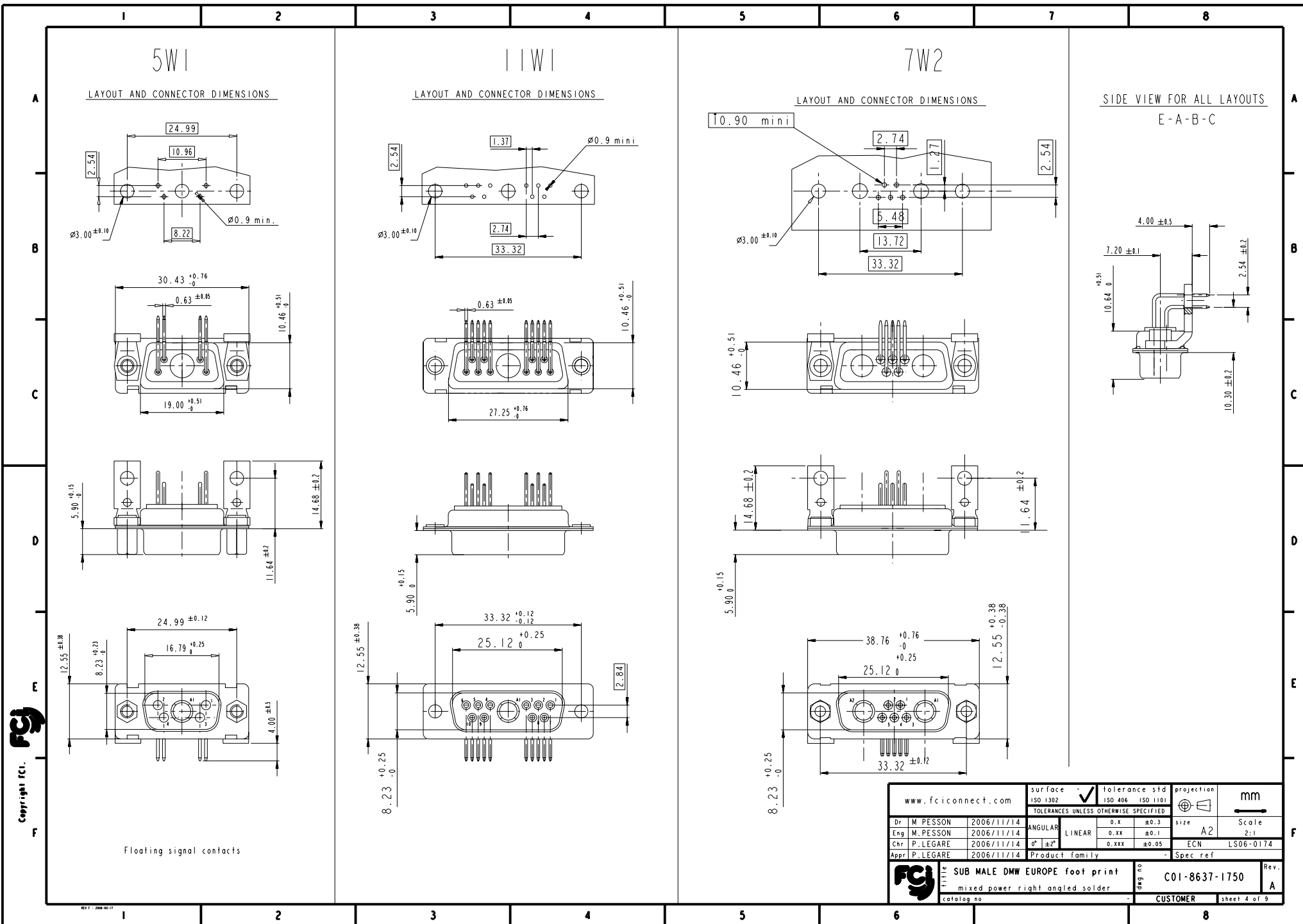
shell size
i
xWx

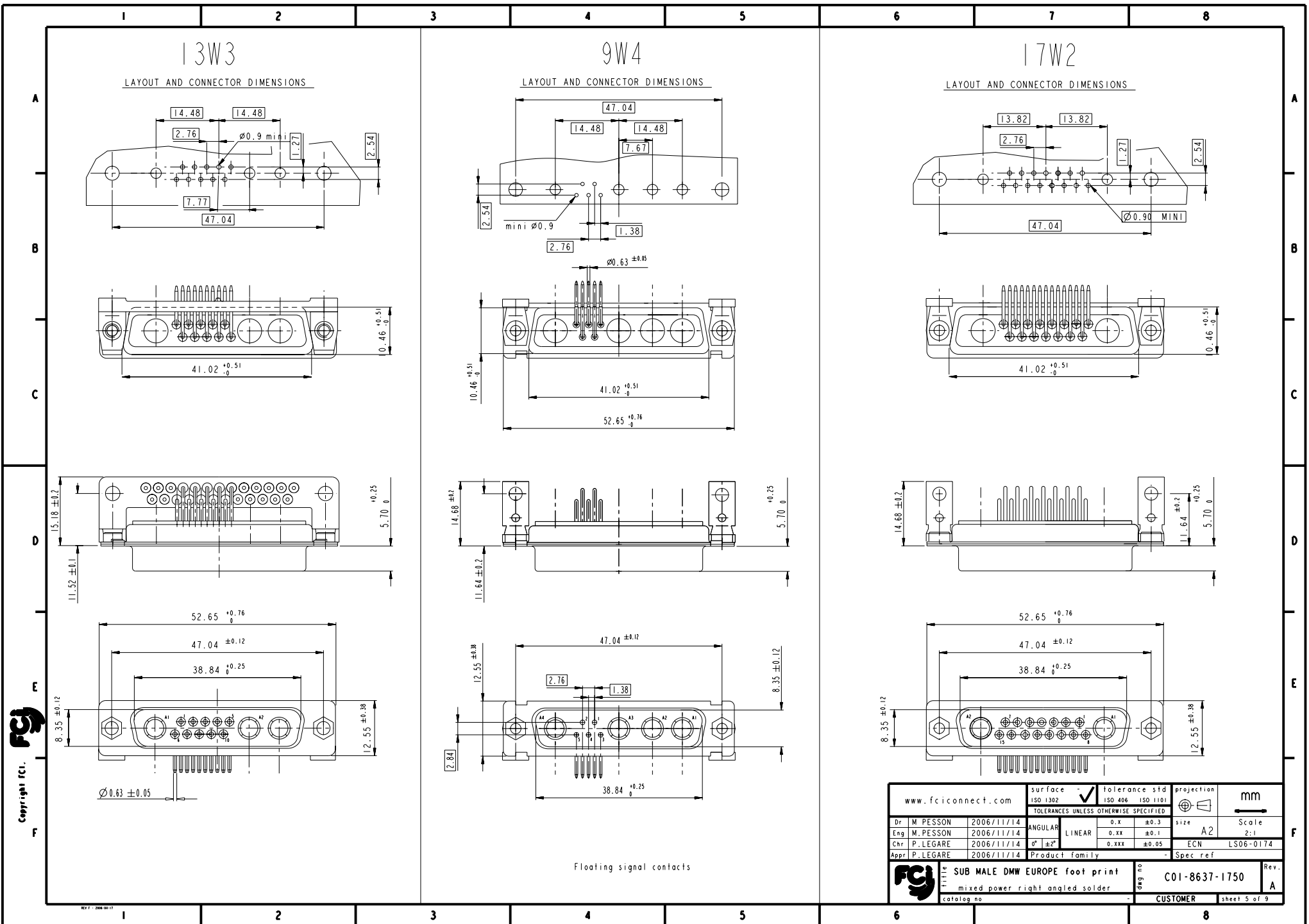
E 5W1
A 11W1
A 7W2
B 21W1
B 17W2
B 13W3
B 9W4
C 25W3
C 21WA4
C 27W2
D 47W1
D 24W7
D 36W4

PART NUMBER	MATINGS/ UNMATINGS	FRONT ACCESSORY	PCB ACCESSORIES
D*MxWxP500CN	500	without	without
D*MLxWxP500CN	500	insert M3	without
D*MOxWxP500CN	500	insert UNC 4.40	without
D*MVxWxP500CN	500	female screw UNC 4.40	without
D*MxWxP500MN	500	without	metal bracket
D*MLxWxP500MN	500	insert M3	metal bracket
D*MOxWxP500MN	500	insert UNC 4.40	metal bracket
D*MVxWxP500MN	500	female screw UNC 4.40	metal bracket
D*MxWxP500N	500	without	plastic bracket
D*MLxWxP500N	500	insert M3	plastic bracket
D*MOxWxP500N	500	insert UNC 4.40	plastic bracket
D*MVxWxP500N	500	female screw UNC 4.40	plastic bracket

PART NUMBER	MATINGS/ UNMATINGS	FRONT ACCESSORY	PCB ACCESSORIES
D*MxWxP543CN	500	without	without
D*MLxWxP543CN	500	insert M3	without
D*MOxWxP543CN	500	insert UNC 4.40	without
D*MVxWxP543CN	500	female screw UNC 4.40	without
D*MxWxP543MN	500	without	metal bracket
D*MLxWxP543MN	500	insert M3	metal bracket
D*MOxWxP543MN	500	insert UNC 4.40	metal bracket
D*MVxWxP543MN	500	female screw UNC 4.40	metal bracket
D*MxWxP543N	500	without	plastic bracket
D*MLxWxP543N	500	insert M3	plastic bracket
D*MOxWxP543N	500	insert UNC 4.40	plastic bracket
D*MVxWxP543N	500	female screw UNC 4.40	plastic bracket

www.fciconnect.com		surface - ISO 1302	tolerance std ISO 406 ISO 1101	projection mm	size A2	Scale 2:1
		TOLERANCES UNLESS OTHERWISE SPECIFIED				
Dr	M. PESSON	2006/11/14	ANGULAR	0.X	±0.3	ECN LS06-0174
Eng	M. PESSON	2006/11/14	LINEAR	0.XX	±0.1	
Chr	P. LEGARE	2006/11/14	0° ±2°	0.XXX	±0.05	
Appr	P. LEGARE	2006/11/14	Product family		Spec ref	
SUB MALE DMW EUROPE foot print		mixed power right angled solder		C01-8637-1750		Rev. A
catalog no		CUSTOMER		sheet 3 of 9		





LAYOUT AND CONNECTOR DIMENSIONS



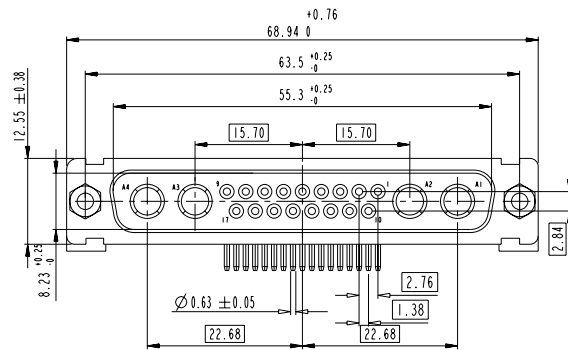
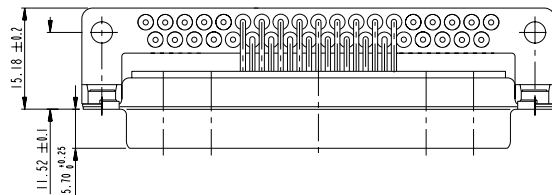
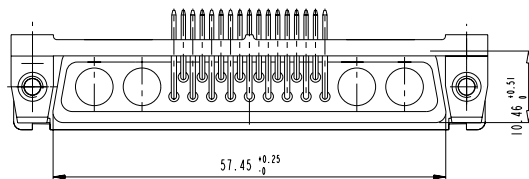
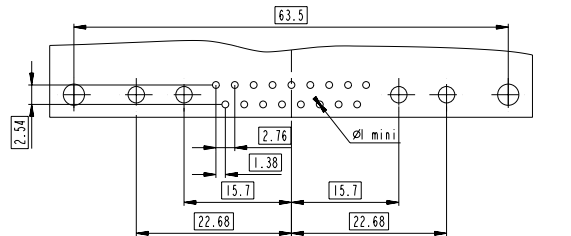
LAYOUT AND CONNECTOR DIMENSIONS



--	--	--	--

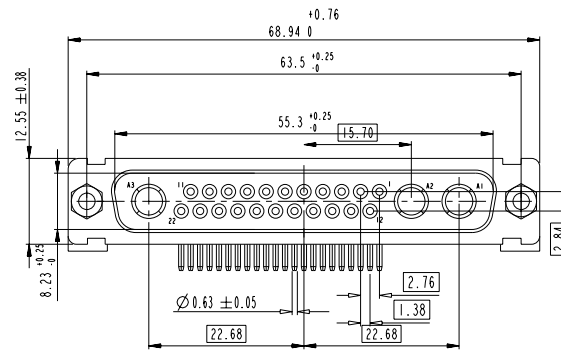
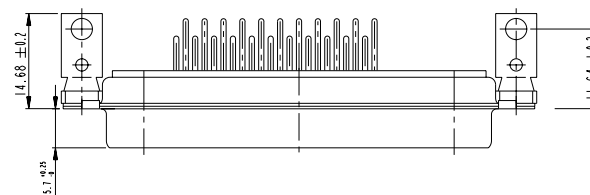
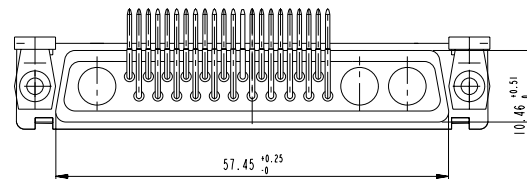
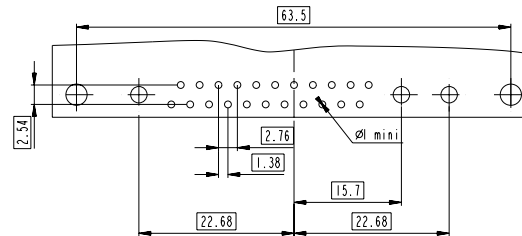
21WA4

LAYOUT AND CONNECTOR DIMENSIONS

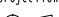




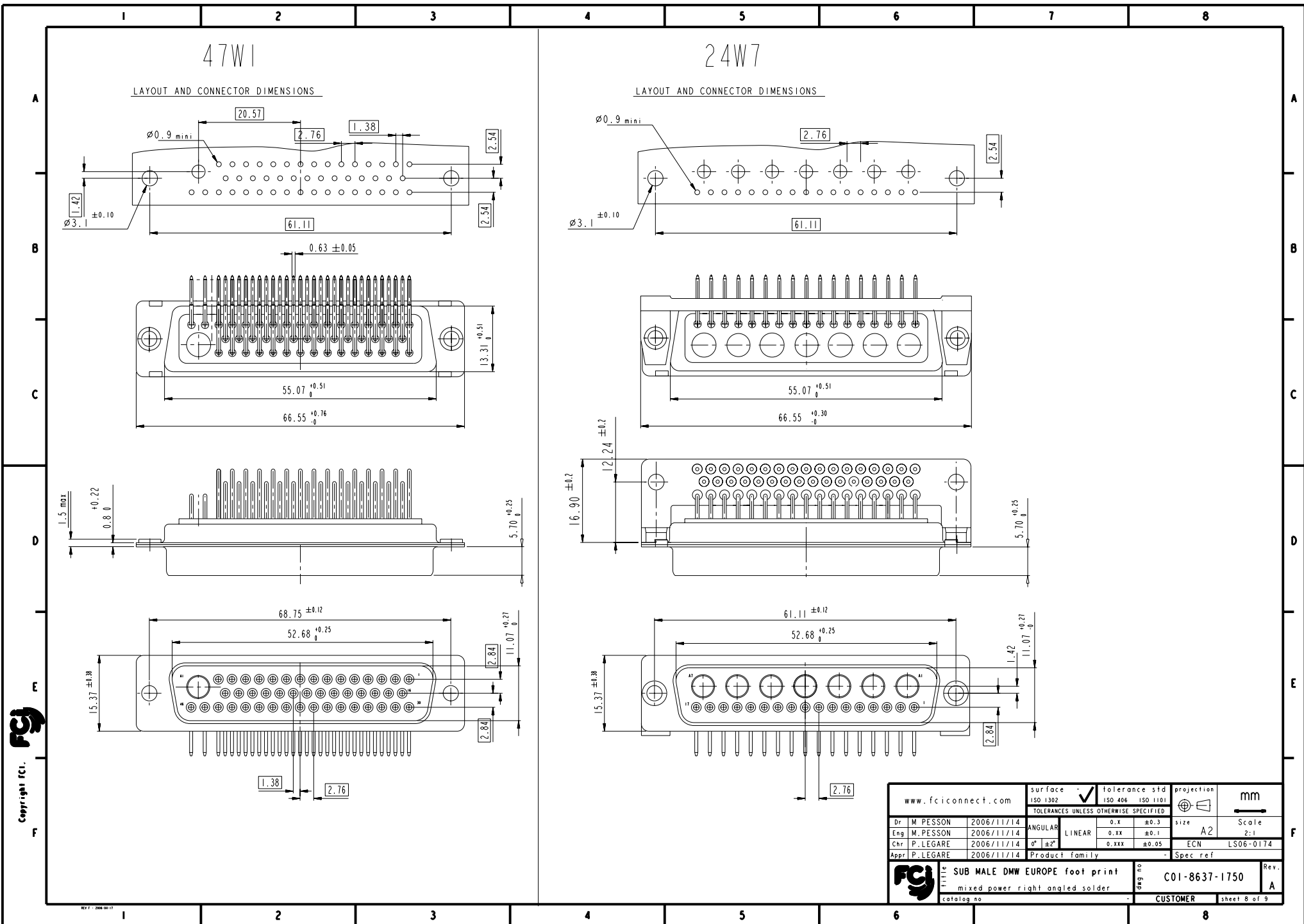
25W3

LAYOUT AND CONNECTOR DIMENSIONS

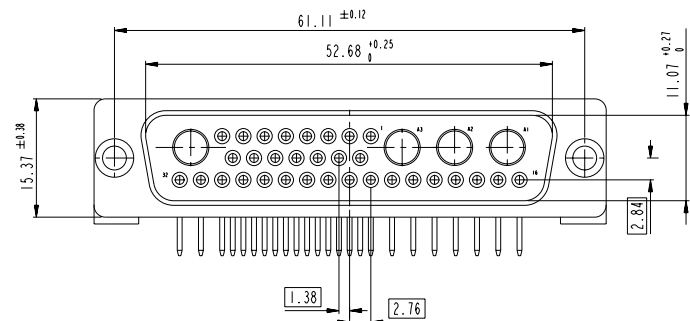
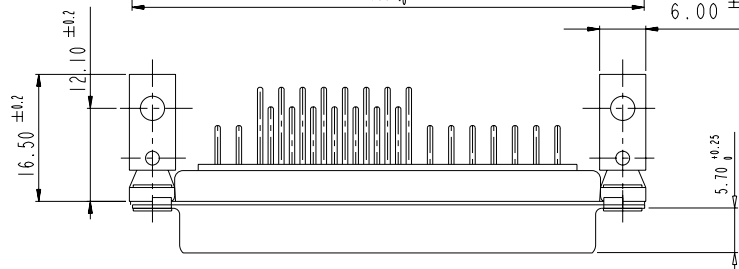
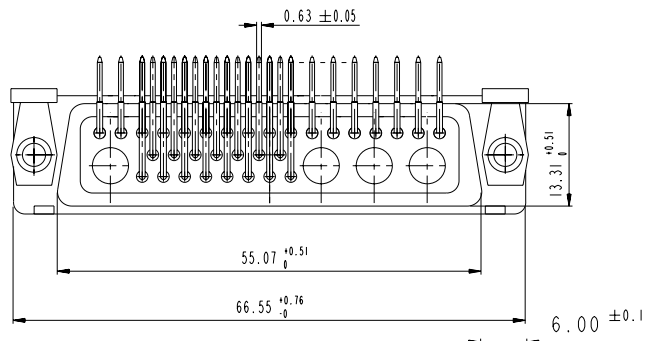
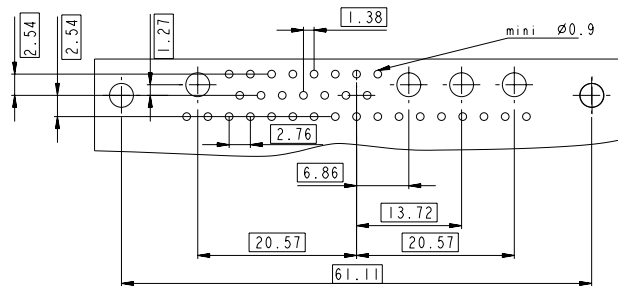


Copyright fci.

www.fciconnect.com			surface - <input checked="" type="checkbox"/> tolerance std ISO 1302 ISO 406 ISO 1101		projection 		mm 		
TOLERANCES UNLESS OTHERWISE SPECIFIED									
Dr	M.PESSON	2006/11/14	ANGULAR	LINEAR	0.X	±0.3	size A2	Scale 2:1	
Eng	M.PESSON	2006/11/14			0.XX	±0.1			
Chr	P.LEGARE	2006/11/14	0° ±2°		0.XXX	±0.05	ECN	LS06-0174	
Appr	P.LEGARE	2006/11/14	Product family				- Spec ref		
			SUB MALE DMW EUROPE foot print				C01-8637-1750		Rev. A
			mixed power right angled solder						
catalog no			-		CUSTOMER			sheet 7 of 9	

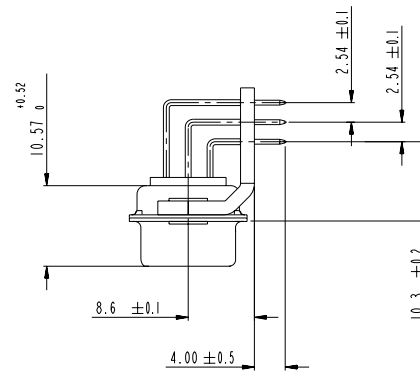


LAYOUT AND CONNECTOR DIMENSIONS






SIDE VIEW FOR ALL LAYOUTS

C



Copyright FCI.

www.fciconnect.com			surface - <input checked="" type="checkbox"/> tolerance std ISO 1302 ISO 406 ISO 1101		projection 		mm 	
TOLERANCES UNLESS OTHERWISE SPECIFIED								
Dr	M.PESSON	2006/11/14	ANGULAR	LINEAR	0.X ±0.3	size	A2	Scale 2:1
Eng	M.PESSON	2006/11/14			0.XX ±0.1			
Chr	P.LEGARE	2006/11/14	0° ±2°		0.XXX ±0.05	ECN	LS06-0174	
Appr	P.LEGARE	2006/11/14	Product family			- Spec ref		
			SUD MALL DOW EUROPE foot print				C01-8637-1750	
mixed power right angled solder			catlog no		-		Rev. A	
title			customer		sheet 9 of 9			