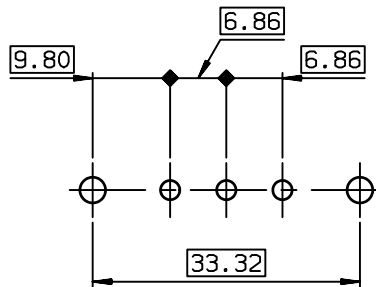


LAYOUT DIMENSIONS (after plating)  
CONNECTOR SIDE VIEW



TIN LEAD PART NUMBER

DAI3W3S300H30	M3
DAV3W3S300H30	UNC 4.40
PART NUMBER	Threaded A

LEAD FREE PART NUMBER

DAI3W3S300H30LF	M3
DAV3W3S300H30LF	UNC 4.40
PART NUMBER	Threaded A

GENERAL CHARACTERISTICS AND ROHS INFORMATIONS:  
SEE DRAWING C01-8639-0001

European Views

www.fciconnect.com		surface ISO 1302	tolerance std ISO 406 ISO 1101	projection	mm
		TOLERANCES UNLESS OTHERWISE SPECIFIED			
Dr	JARRY	2000/12/29	0.X	±0.1	size
Eng	PESSON	2000/12/29	ANGULAR	LINEAR	0.XX ±0.1
Chr	LEGARE	2000/12/29	0.XX' ±2'	0.XXX ±0.1	A3
Appr	LEGARE	2000/12/29	Product family		Scale 1.5
		D-SUB		ECN LS06-0095	
		Spec ref -			
		SOCKET CONNECTORS SUB D			Rev.
		SCREWS + HARPOONS			dwg no
catalog no		-			C01-8639-1796
		CUSTOMER			sheet 1 of 1

rev	ecn no	dr	date
B	-	DEB	2003/09/29
C	LS05-001	MPE	2005/03/09
D	LS06-0095	LGO	2006/06/27
-	-	-	-
-	-	-	-
-	-	-	-