

REFERENCE SPECIFICATIONS

-NFC 93425 (in compliance with HE 507)

PHYSICAL CHARACTERISTICS

- INSULATOR MATERIAL: THERMOPLASTIC ,UL94V0
- CONTACT MATERIAL: BRASS
- ACCESSORIES: BRASS
- SHELLS: STEEL

ELECTRICAL CHARACTERISTICS

- NOMINAL CURRENT: 30A
- CONTACT RESISTANCE: <= 7.3 m ohms
- CONTACT/CONTACT : >=1000 V
- CONTACT/GROUND : >=1200 V
- INSULATION RESISTANCE: >=5000 MOhms

ENVIRONMENTAL CHARACTERISTICS

- CLIMATIC CATEGORY: 55/125/21
- TEMPERATURE RANGE -55°C TO +125°C
- DAMP HEAT STEADY STATE 21 DAYS
- SALT SPRAY 24 HOURS

MECHANICAL CHARACTERISTICS

- RETENTION AGAINST TORQUE: - Threaded insert: 0.7 N.m minimum
- Female screw : 0.5 N.m minimum

NOTE RoHS INFORMATION

- The "LF" products meet european union Directives and other country regulations as described in GS-22-008.
- The housing will withstand exposure to 260°C peak temperature for 3.5 seconds in a wave solder application with a 1.6mm minimum thick circuit board. See application notes/procedures if they are available.
- Termination plating spec:
 - Ni 1.27µm+Sn 2.5 to 7.5µm(pure bright)
- Active area plating spec:
 - Ni + Gold
 - Shell plating :2 to 4µm Cu + Ni + 3 to 10µmm Sn(pure bright)
 - Accessories: Sn pure bright + Nickel
- Packaging spec: See GS-14-920

DBL5W5S700G30LF

Series

- Shell size: **E A B C**
see sheet 3
- Front accessory definition
see sheet 2
- blank :without accessory
 - L** :threaded insert M3
 - O** :threaded insert UNC 4-40
 - V** :female screw UNC 4-40

Layout of contacts (see sheets)

Contacts

- S** :Socket

Termination type

- 7** Right angle/USA

Plating

- 00** 200 matings/unmatings
- 43** 500 matings/unmatings

PCB accessories definition
see sheet 2

- A** :without accessory
- H** :Metal brackets+harpoons for PCB 2.40mm
- G** :Metal brackets+harpoons for PCB 1.60mm
- M** :Metal brackets

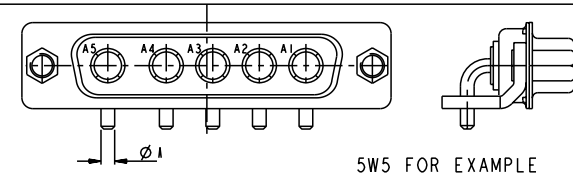
Power contacts

- 30** :Fitted with power contacts 30 Amp.

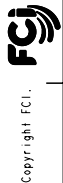
See note RoHS

TABLE 1:PCB HOLE DIAMETERS

	POWER CONTACTS		ACCESSORIES
30 A	Ø2.00	Ø2.40	Ø3.10
Max current power	ØA ^{+0.1} ₀	PCB HOLE +/-0.1	PCB HOLE +/-0.1



www.fciconnect.com		surface	tolerance std	projection	mm
		ISO 1302	ISO 406 ISO 1101	mm	
		TOLERANCES UNLESS OTHERWISE SPECIFIED		size	Scale
		ANGULAR	LINEAR	0.xx ±0.3	2:1
		0° ±2'		0.xxx ±0.05	ECN LS07-0273
		Product family		- Spec ref	
Dr	M PESSON	2005-10-11			
Eng	P LEGARE	2005-10-11			
Chr					
Appr					
rev	ecn no	dr	date		
A	LS05-0113	MPE	2005-10-11		
B	LS06-0208	LGO	2006-12-13		
C	LS07-0085	MPE	2007/03/21		
D	LS07-0273	MPE	2007/11/05		
FCI		SUB FEMALE DW US foot print		ang no	Rev.
		full power right angled solder		C01-8639-2309	D
catalog no		CUSTOMER		sheet 1 of 5	



Copyright FCI.

	1	2	3	4	5	6	7	8																																																
A																																																								
B																																																								
C	FRONT ACCESSORY	Blank Without	L insert M3 O insert UNC 4.40	V insert UNC 4.40	Blank Without	L insert M3 O insert UNC 4.40	V insert UNC 4.40	V insert UNC 4.40																																																
C	PCB ACCESSORIES	A Without	A Without	A Without	M Metal brackets	M Metal brackets	M Metal bracket	M Metal bracket																																																
D																																																								
E	FRONT ACCESSORY	Blank Without	L insert M3 O insert UNC 4.40	V insert UNC 4.40	Blank Without	L insert M3 O insert UNC 4.40	V insert UNC 4.40	V insert UNC 4.40																																																
E	PCB ACCESSORIES	G Metal brackets + harpoons for PCB 1.60mm	G Metal brackets + harpoons for PCB 1.60mm	G Metal brackets + harpoons for PCB 1.60mm	H Metal brackets + harpoons for PCB 2.40mm	H Metal brackets + harpoons for PCB 2.40mm	H Metal brackets + harpoons for PCB 2.40mm	H Metal brackets + harpoons for PCB 2.40mm																																																
F						<table border="1"> <tr> <td colspan="2">www.fciconnect.com</td> <td>surface</td> <td>tolerance std</td> <td>projection</td> <td>mm</td> </tr> <tr> <td colspan="2"></td> <td>ISO 1302</td> <td>ISO 406 ISO 1101</td> <td></td> <td></td> </tr> <tr> <td colspan="2"></td> <td colspan="4">TOLERANCES UNLESS OTHERWISE SPECIFIED</td> </tr> <tr> <td>Dr</td> <td>M PESSON</td> <td>2005-10-11</td> <td>ANGULAR</td> <td>0.X</td> <td>±0.3</td> </tr> <tr> <td>Eng</td> <td>P LEGARE</td> <td>2005-10-11</td> <td>LINEAR</td> <td>0.XX</td> <td>±0.1</td> </tr> <tr> <td>Chr</td> <td></td> <td></td> <td>0° ±2°</td> <td>0.XXX</td> <td>±0.05</td> </tr> <tr> <td>Appr</td> <td></td> <td></td> <td>Product family</td> <td></td> <td>ECN LS07-0273</td> </tr> <tr> <td></td> <td></td> <td></td> <td></td> <td></td> <td>Spec ref</td> </tr> </table>			www.fciconnect.com		surface	tolerance std	projection	mm			ISO 1302	ISO 406 ISO 1101					TOLERANCES UNLESS OTHERWISE SPECIFIED				Dr	M PESSON	2005-10-11	ANGULAR	0.X	±0.3	Eng	P LEGARE	2005-10-11	LINEAR	0.XX	±0.1	Chr			0° ±2°	0.XXX	±0.05	Appr			Product family		ECN LS07-0273						Spec ref
www.fciconnect.com		surface	tolerance std	projection	mm																																																			
		ISO 1302	ISO 406 ISO 1101																																																					
		TOLERANCES UNLESS OTHERWISE SPECIFIED																																																						
Dr	M PESSON	2005-10-11	ANGULAR	0.X	±0.3																																																			
Eng	P LEGARE	2005-10-11	LINEAR	0.XX	±0.1																																																			
Chr			0° ±2°	0.XXX	±0.05																																																			
Appr			Product family		ECN LS07-0273																																																			
					Spec ref																																																			
F	SCALE: 4					<table border="1"> <tr> <td></td> <td>SUB FEMALE DW US foot print</td> <td>Rev.</td> </tr> <tr> <td></td> <td>full power right angled solder</td> <td>D</td> </tr> <tr> <td>catalog no</td> <td></td> <td>deg no</td> </tr> <tr> <td></td> <td></td> <td>C01-8639-2309</td> </tr> <tr> <td></td> <td>CUSTOMER</td> <td>sheet 2 of 5</td> </tr> </table>				SUB FEMALE DW US foot print	Rev.		full power right angled solder	D	catalog no		deg no			C01-8639-2309		CUSTOMER	sheet 2 of 5																																	
	SUB FEMALE DW US foot print	Rev.																																																						
	full power right angled solder	D																																																						
catalog no		deg no																																																						
		C01-8639-2309																																																						
	CUSTOMER	sheet 2 of 5																																																						
	1	2	3	4	5	6	7	8																																																

1 2 3 4 5 6 7 8

A

B

C

D

E

F

A

B

C

D

E

F

PART NUMBER	AMPS	MATINGS/ UNMATINGS	FRONT ACCESSORY	PCB ACCESSORIES
D*xWxS700A30LF	30	200	without	without
D*LxWxS700A30LF	30	200	insert M3	without
D*OxWxS700A30LF	30	200	insert UNC 4.40	without
D*VxWxS700A30LF	30	200	female screw UNC 4.40	without
D*xWxS700H30LF	30	200	without	metal bracket+harpoon PCB 2.40mm
D*LxWxS700H30LF	30	200	insert M3	metal bracket+harpoon PCB 2.40mm
D*OxWxS700H30LF	30	200	insert UNC 4.40	metal bracket+harpoon PCB 2.40mm
D*VxWxS700H30LF	30	200	female screw UNC 4.40	metal bracket+harpoon PCB 2.40mm
D*xWxS700G30LF	30	200	without	metal bracket+harpoon PCB 1.60mm
D*LxWxS700G30LF	30	200	insert M3	metal bracket+harpoon PCB 1.60mm
D*OxWxS700G30LF	30	200	insert UNC 4.40	metal bracket+harpoon PCB 1.60mm
D*VxWxS700G30LF	30	200	female screw UNC 4.40	metal bracket+harpoon PCB 1.60mm
D*xWxS700M30LF	30	200	without	metal bracket
D*LxWxS700M30LF	30	200	insert M3	metal bracket
D*OxWxS700M30LF	30	200	insert UNC 4.40	metal bracket
D*VxWxS700M30LF	30	200	female screw UNC 4.40	metal bracket

shell size LAYOUTS
xWx

E 2V2
A 3V3
A 3W3
B 5W5
C 8W8

PART NUMBER	AMPS	MATINGS/ UNMATINGS	FRONT ACCESSORY	PCB ACCESSORIES
D*xWxS743A30LF	30	500	without	without
D*LxWxS743A30LF	30	500	insert M3	without
D*OxWxS743A30LF	30	500	insert UNC 4.40	without
D*VxWxS743A30LF	30	500	female screw UNC 4.40	without
D*xWxS743H30LF	30	500	without	metal bracket+harpoon PCB 2.40mm
D*LxWxS743H30LF	30	500	insert M3	metal bracket+harpoon PCB 2.40mm
D*OxWxS743H30LF	30	500	insert UNC 4.40	metal bracket+harpoon PCB 2.40mm
D*VxWxS743H30LF	30	500	female screw UNC 4.40	metal bracket+harpoon PCB 2.40mm
D*xWxS743G30LF	30	500	without	metal bracket+harpoon PCB 1.60mm
D*LxWxS743G30LF	30	500	insert M3	metal bracket+harpoon PCB 1.60mm
D*OxWxS743G30LF	30	500	insert UNC 4.40	metal bracket+harpoon PCB 1.60mm
D*VxWxS743G30LF	30	500	female screw UNC 4.40	metal bracket+harpoon PCB 1.60mm
D*xWxS743M30LF	30	500	without	metal bracket
D*LxWxS743M30LF	30	500	insert M3	metal bracket
D*OxWxS743M30LF	30	500	insert UNC 4.40	metal bracket
D*VxWxS743M30LF	30	500	female screw UNC 4.40	metal bracket



Copyright FCJ.

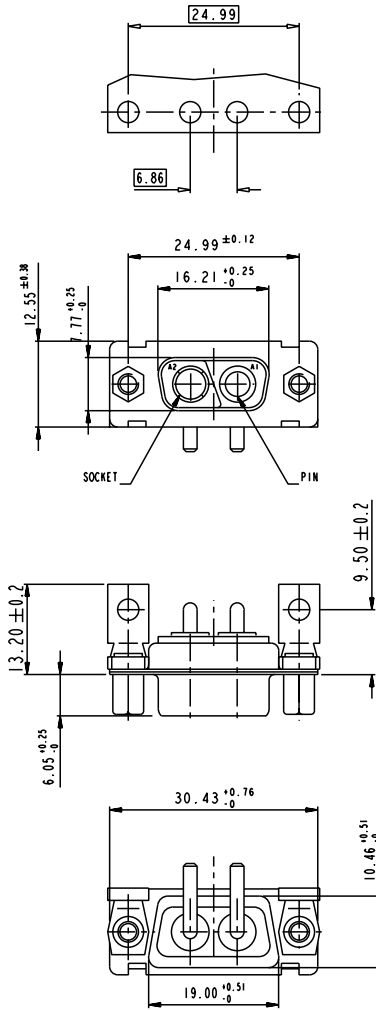
www.fciconnect.com		surface ISO 1302	tolerance std ISO 406 ISO 1101	projection mm
		TOLERANCES UNLESS OTHERWISE SPECIFIED		
Dr M PESSON	2005-10-11	ANGULAR	0.X ±0.3	size A2 Scale 2:1
Eng P LEGARE	2005-10-11	LINEAR	0.XX ±0.1	
Chr		0° ±2°	0.XXX ±0.05	ECN LS07-0273
Appr		Product family		Spec ref
FCJ		SUB FEMALE DW US foot print full power right angled solder		Rev. D
catalog no		C01-8639-2309		sheet 3 of 5
		CUSTOMER		

REV 7 - 2005-04-17

1 2 3 4 5 6 7 8

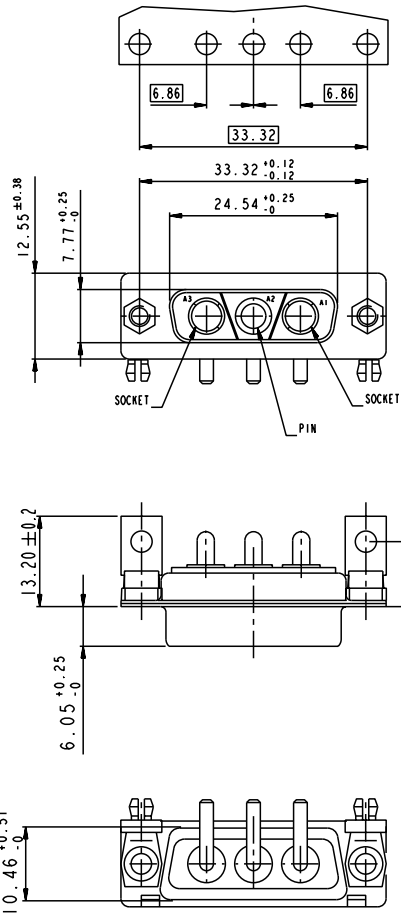
2V2

LAYOUT AND CONNECTOR DIMENSIONS
For PCB hole diameters see table I sheet I



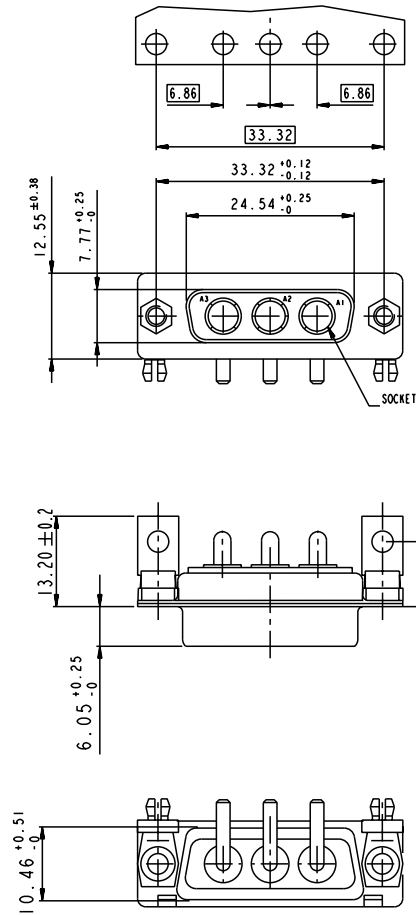
3V3

LAYOUT AND CONNECTOR DIMENSIONS
For PCB hole diameters see table I sheet I

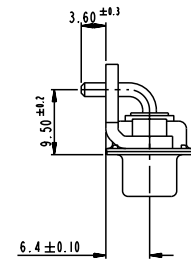


3W3

LAYOUT AND CONNECTOR DIMENSIONS
For PCB hole diameters see table I sheet I



SIDE VIEW FOR ALL LAYOUTS



Copyright FCI.

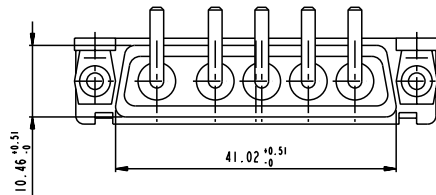
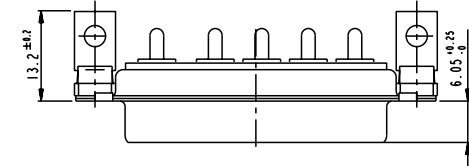
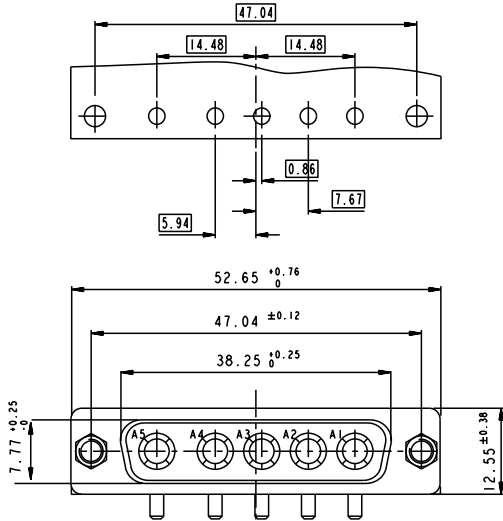
www.fciconnect.com		surface ISO 1302	tolerance std ISO 406 ISO 1101	projection mm
		TOLERANCES UNLESS OTHERWISE SPECIFIED		
Dr M PESSON	2005-10-11	ANGULAR	0.X ±0.3	size A2
Eng P LEGARE	2005-10-11	LINEAR	0.XX ±0.1	Scale 2:1
Chr		0° ±2'	0.XXX ±0.05	ECN LS07-0273
Appr		Product family		Spec ref
FCI		SUB FEMALE DW US foot print full power right angled solder		Rev. D
catalog no		C01-8639-2309		sheet 4 of 5
		CUSTOMER		

1 2 3 4 5 6 7 8

5W5

LAYOUT AND CONNECTOR DIMENSIONS

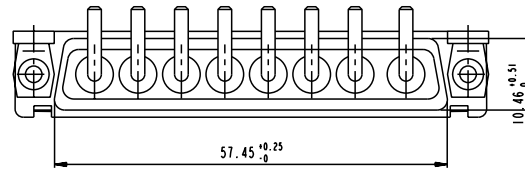
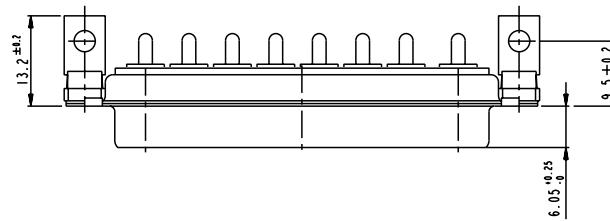
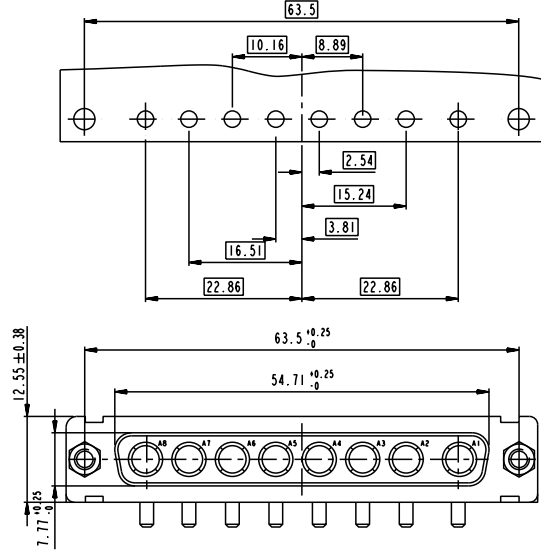
For PCB hole diameters see table 1 sheet 1



8W8

LAYOUT AND CONNECTOR DIMENSIONS

For PCB hole diameters see table 1 sheet 1



Copyright FCI.

www.fciconnect.com		surface ISO 1302	tolerance std ISO 406 ISO 1101	projection mm
		TOLERANCES UNLESS OTHERWISE SPECIFIED		
Dr M PESSON	2005-10-11	ANGULAR	0.X ±0.3	size A2 Scale 2:1
Eng P LEGARE	2005-10-11	LINEAR	0.XX ±0.1	ECN LS07-0273
Chr		0° ±2°	0.XXX ±0.05	Spec ref
Appr		Product family		
FCI		SUB FEMALE DW US foot print full power right angled solder		Rev. D
catalog no		C01-8639-2309		sheet 5 of 5
		CUSTOMER		

REV 7 - 2006-04-17

1 2 3 4 5 6 7 8