



Copyright FCI.

A

B

C

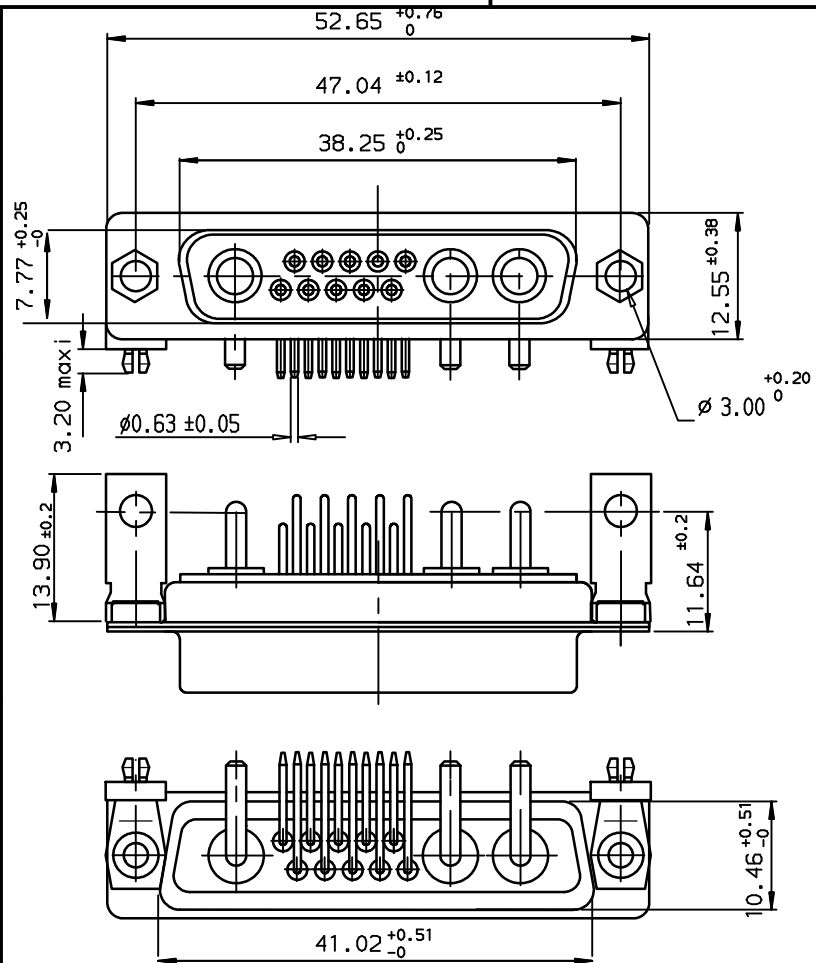
D

A

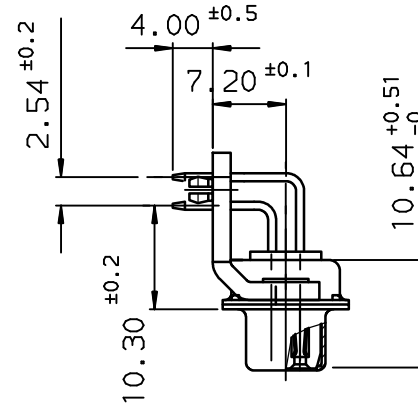
B

C

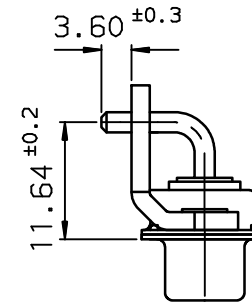
D



VIEW WITHOUT POWERS CONTACTS



VIEW WITH POWERS CONTACTS



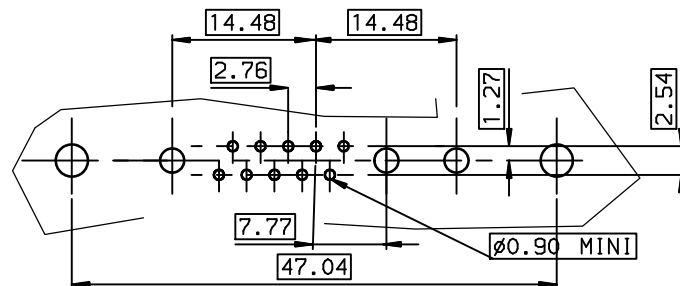
TIN LEAD PART NUMBER

DB13W3S500G30
PART NUMBER

LEAD FREE PART NUMBER

DB13W3S500G30LF
PART NUMBER

LAYOUT DIMENSIONS (after plating)
CONNECTOR SIDE VIEW



GENERAL CHARACTERISTICS AND ROHS INFORMATIONS:
SEE DRAWING C01-8639-0000

European Views

www.fciconnect.com		surface ISO 1302 ✓	tolerance std ISO 406 ISO 1101	projection mm
		TOLERANCES UNLESS OTHERWISE SPECIFIED		size A3
Dr	JARRY	1995/10/16	0.x ±0.1	Scale 2
Eng	PESSON	1995/10/16	0.xx ±0.1	ECN LS06-0095
Chr	LEGARE	1995/10/16	0.xxx ±0.1	Spec ref -
Appr	LEGARE	1995/10/16	Product family D-SUB	
rev	ecn no	dr	date	
B	-	BAR	2003/10/29	
C	LS05-001	MPE	2005/03/07	
D	LS06-0095	LGO	2006/07/19	
title SOCKET CONNECTOR FOR POWERS CONTACTS .		fig no	C01-8639-0591	
catalog no		CUSTOMER		Rev. D

REV F - 2006-04-17