

REFERENCE SPECIFICATIONS

• NFC 93425 (in compliance with HE 507)

PHYSICAL CHARACTERISTICS

- INSULATOR MATERIAL: THERMOPLASTIC UL94V0
- CONTACT MATERIAL: PHOSPHOR BRONZE (SIGNAL CONTACT)
BRASS (POWERS CONTACT)
- ACCESSORIES: BRASS
- SHELLS: STEEL

ELECTRICAL CHARACTERISTICS

- NOMINAL CURRENT: 7.5A (SIGNAL CONTACT)
30A or 40A (POWER CONTACT)
- CONTACT RESISTANCE: $\leq 7.3 \text{ m Ohms}$ (SIGNAL and POWER)
- CONTACT/CONTACT : $\geq 1000 \text{ V}$
- CONTACT/GROUND : $\geq 1200 \text{ V}$
- INSULATION RESISTANCE: $\geq 5000 \text{ MOhms}$
- CLIMATIC CATEGORY: 55/125/21
TEMPERATURE RANGE -55°C TO $+125^{\circ}\text{C}$
DAMP HEAT STEADY STATE 21 DAYS
SALT SPRAY 48 HOURS
- RETENTION AGAINST TORQUE: • Threaded insert: 0.7 N.m minimum
• Female screw : 0.5 N.m minimum

NOTE RoHS INFORMATION

- The "LF" products meet european union Directives and other country regulations as described in GS-22-008.
- The housing will withstand exposure to 260°C peak temperature for 3.5 seconds in a wave solder application with a 1.6mm minimum thick circuit board. See application notes/procedures if they are available.
- Termination plating spec:
 - Signal contacts: Ni + Gold
 - Power contacts: Ni 1.27µm+Sn 2.5 to 7.5µm pure bright
- Active area plating spec:
 - Signal and power contacts: Ni + Gold
- Shell plating : 2 to 4µm Cu + Ni + 3 to 10µm Sn, pure bright
- Accessories: Sn pure bright + Nickel
- Packaging spec: See GS-14-920

Series

DBL13W3S300G30LF

Shell size: E A B C D
see sheet 3

Front accessory definition
see sheet 2

- L : threaded insert M3
- O : threaded insert UNC 4-40
- V : female screw UNC 4-40

Layout of contacts (see sheet 3)

Contacts

- S : Socket

Termination type

- 3 : Straight version

Plating

- 00 : 200 malings/unmalings
- 43 : 500 malings/unmalings

PCB accessories definition
see sheet 2

- H : Metal brackets+harpoons for PCB 2.40mm
- G : Metal brackets+harpoons for PCB 1.60mm

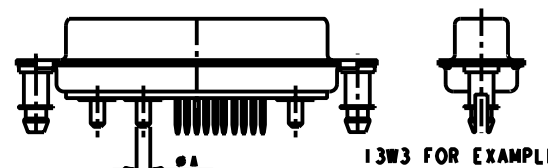
Power contacts



- 30 : Filled with power contacts 30 Amp.
- 40 : Filled with power contacts 40 Amp.

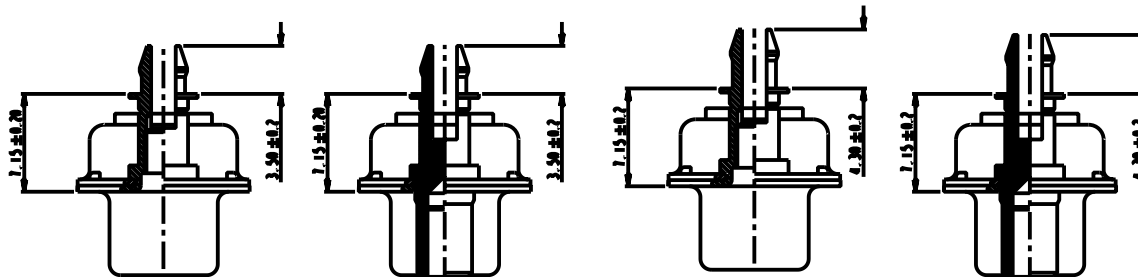
See note RoHS

TABLE 1: PCB HOLE DIAMETERS

POWER CONTACTS			ACCESSORIES	SIGNAL CONTACTS
30 A	2.00	Ø2.40	Ø3.10	Ø0.90 min
40 A	2.80	3.10		
Max current power	ØA ±0.1	PCB HOLE ±0.1	PCB HOLE ±0.1	PCB HOLE ±0.1



www.fciconnect.com			surface - <input checked="" type="checkbox"/> tolerance std ISO 1302 ISO 406 ISO 1101					mm		
			TOLERANCES UNLESS OTHERWISE SPECIFIED							
Dr M PESSON 2005-10-11			ANGULAR		0.X ±0.3		size A2		Scale 2:1	
Eng P LEGARE 2005-10-11			LINEAR		0.XX ±0.1					
Chr			0° ±2°		0.XXX ±0.05		ECN		LS08-0067	
Appr			Product family				- Spec ref			
			title SUB FEMALE DW				dag no C01-8639-2302		Re	
			mixed power straight solder						F	
			catalog no				CUSTOMER		sheet 1 of 7	



FRONT ACCESSORY	L insert M3 O insert UMC 4.40	V insert UMC 4.40	L insert M3 O insert UMC 4.40	V insert UMC 4.40
PCB ACCESSORIES	G Harpoon for PCB 1.60mm	G Harpoon for PCB 1.60mm	H Harpoon for PCB 2.40mm	H Harpoon for PCB 2.40mm




PART NUMBER	AMPS	RATINGS/ UNRATINGS	FRONT ACCESSORY	PCB ACCESSORIES
D=LxW=S300G30LF	30	200	insert M3	harpoon PCB 1.60mm
D=OxW=S300G30LF	30	200	insert UMC 4.40	harpoon PCB 1.60mm
D=VxW=S300G30LF	30	200	female screw UMC 4.40	harpoon PCB 1.60mm
D=LxW=S300H30LF	30	200	insert M3	harpoon PCB 2.40mm
D=OxW=S300H30LF	30	200	insert UMC 4.40	harpoon PCB 2.40mm
D=VxW=S300H30LF	30	200	female screw UMC 4.40	harpoon PCB 2.40mm
D=LxW=S300G40LF	40	200	insert M3	harpoon PCB 1.60mm
D=OxW=S300G40LF	40	200	insert UMC 4.40	harpoon PCB 1.60mm
D=VxW=S300G40LF	40	200	female screw UMC 4.40	harpoon PCB 1.60mm
D=LxW=S300H40LF	40	200	insert M3	harpoon PCB 2.40mm
D=OxW=S300H40LF	40	200	insert UMC 4.40	harpoon PCB 2.40mm
D=VxW=S300H40LF	40	200	female screw UMC 4.40	harpoon PCB 2.40mm

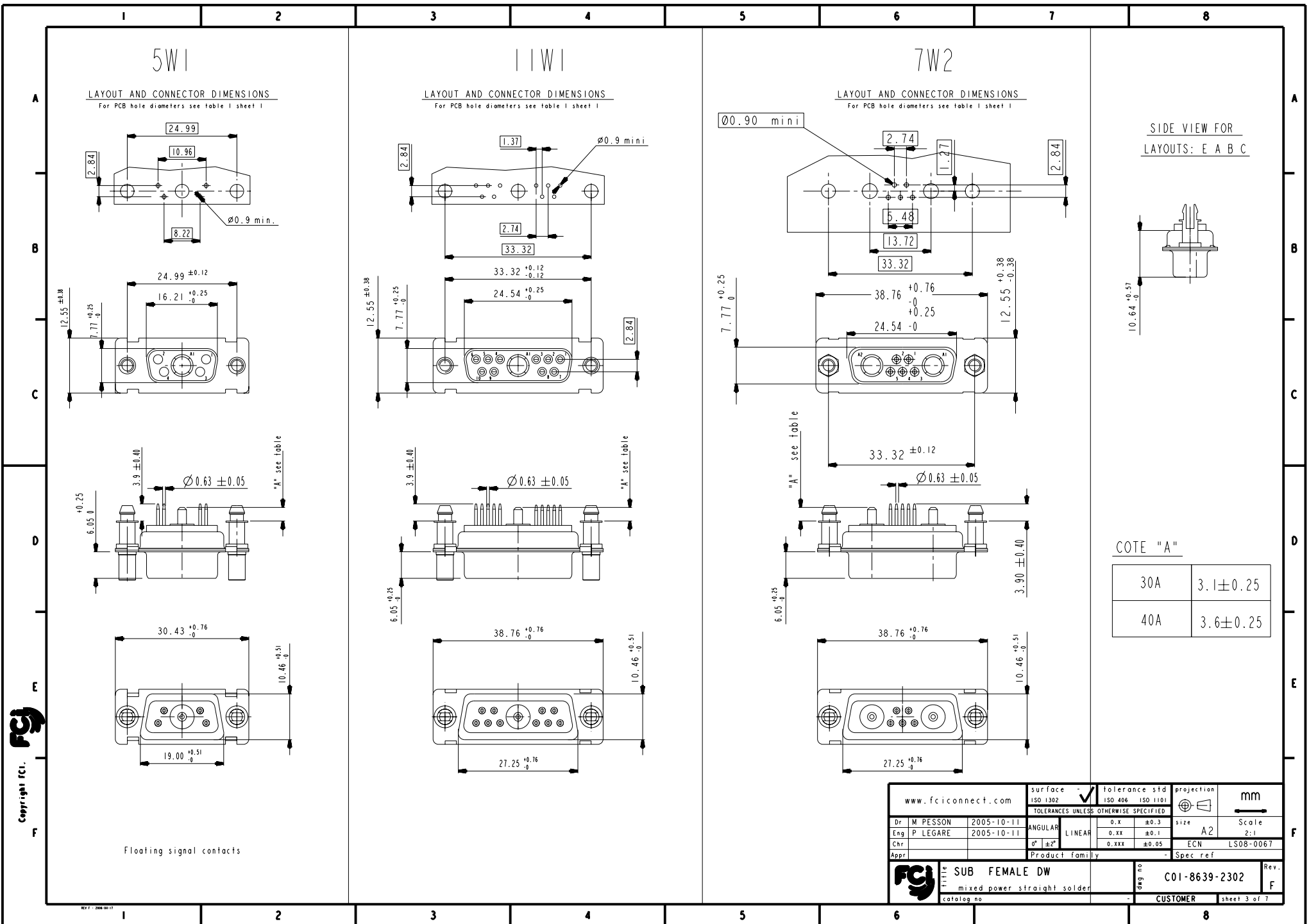
shell size LAYOUTS

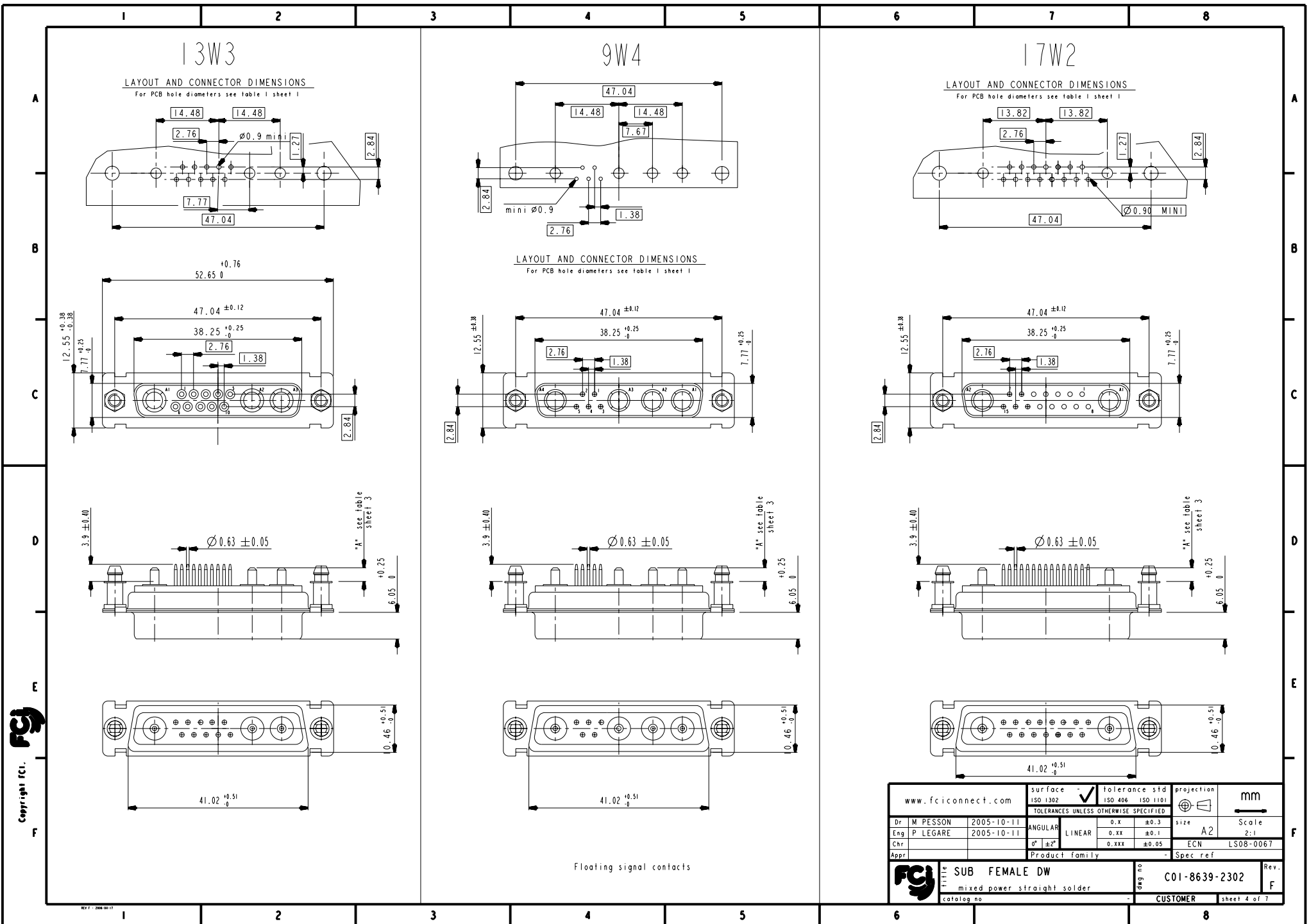
x	Wx
E	5W1
A	11W1
A	7W2
B	21W1
B	17W2
B	13W3
B	9W4
C	25W3
C	21WA4
C	27W2
D	47W1
D	24W7
D	36W4

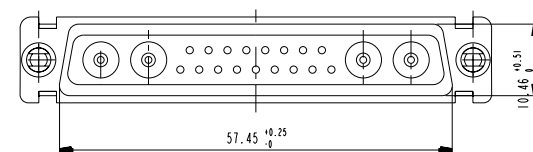
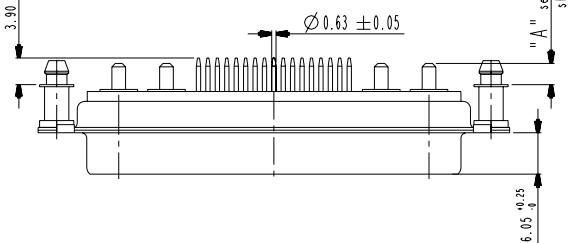
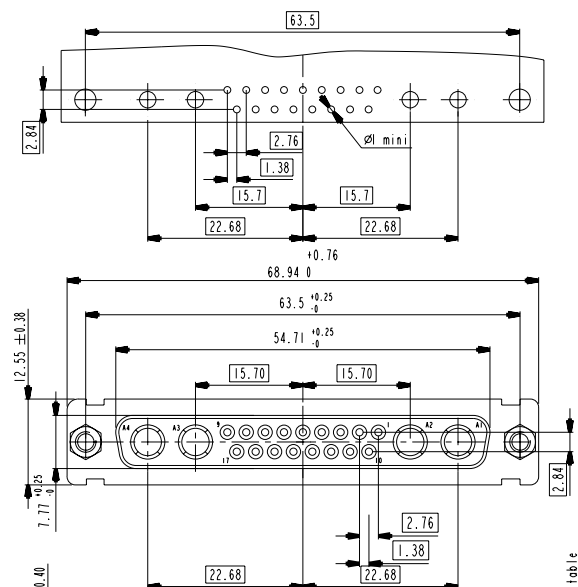
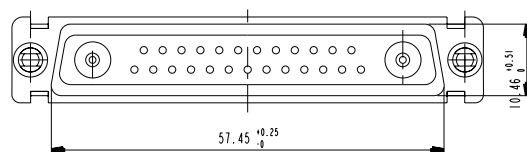
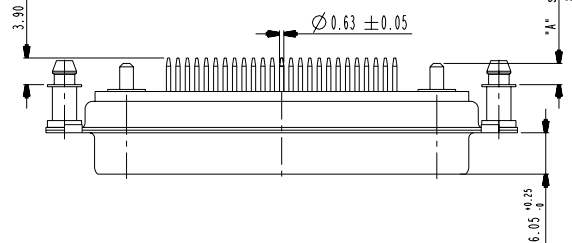
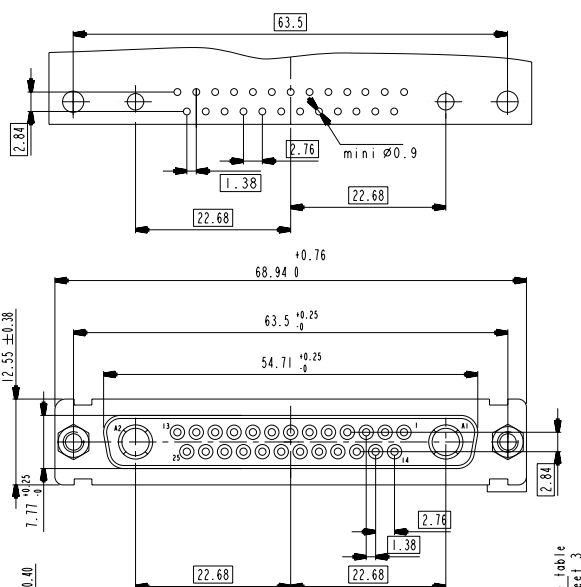
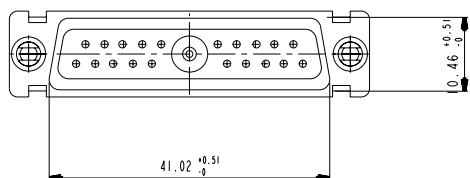
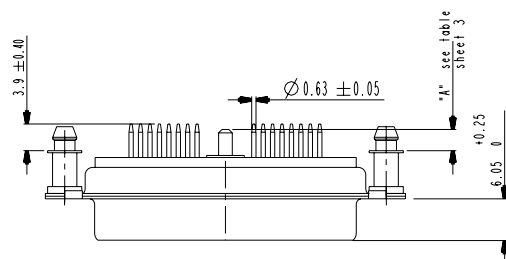
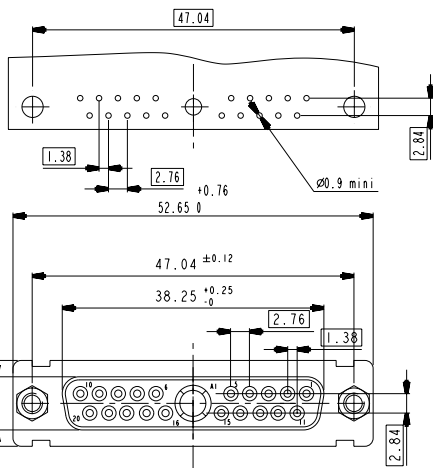
PART NUMBER	AMPS	RATINGS/ UNRATINGS	FRONT ACCESSORY	PCB ACCESSORIES
D=LxW=S343G30LF	30	500	insert M3	harpoon PCB 1.60mm
D=OxW=S343G30LF	30	500	insert UMC 4.40	harpoon PCB 1.60mm
D=VxW=S343G30LF	30	500	female screw UMC 4.40	harpoon PCB 1.60mm
D=LxW=S343H30LF	30	500	insert M3	harpoon PCB 2.40mm
D=OxW=S343H30LF	30	500	insert UMC 4.40	harpoon PCB 2.40mm
D=VxW=S343H30LF	30	500	female screw UMC 4.40	harpoon PCB 2.40mm
D=LxW=S343G40LF	40	500	insert M3	harpoon PCB 1.60mm
D=OxW=S343G40LF	40	500	insert UMC 4.40	harpoon PCB 1.60mm
D=VxW=S343G40LF	40	500	female screw UMC 4.40	harpoon PCB 1.60mm
D=LxW=S343H40LF	40	500	insert M3	harpoon PCB 2.40mm
D=OxW=S343H40LF	40	500	insert UMC 4.40	harpoon PCB 2.40mm
D=VxW=S343H40LF	40	500	female screw UMC 4.40	harpoon PCB 2.40mm

SCALE: 4

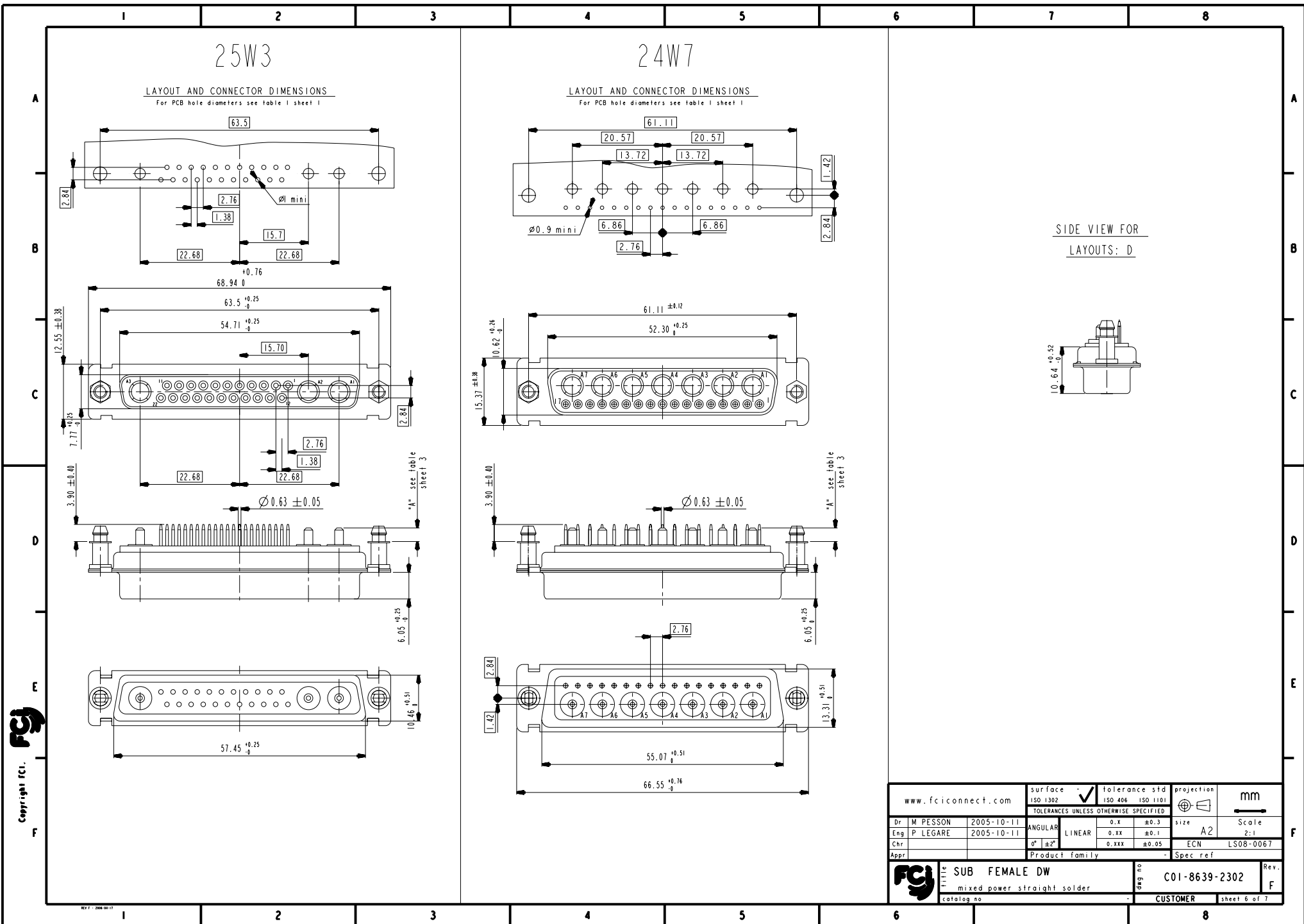
www.fciconnect.com			surface - <input checked="" type="checkbox"/> tolerance std ISO 1302 ISO 406 ISO 1101		projection  mm 			
TOLERANCES UNLESS OTHERWISE SPECIFIED								
Dr	M PESSON	2005-10-11	ANGULAR	LINEAR	0.X	±0.3	size A2	Scale 2:1
Eng	P LEGARE	2005-10-11			0.XX	±0.1		
Chr			0° ±2°		0.XXX	±0.05	ECN LS08-0067	Spec ref
Appr			Product family			-		
			Title SUB FEMALE DW		deg no C01-8639-2302		Re	
			mixed power straight solder					
catalog no					CUSTOMER		sheet 2 of 7	



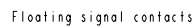







PDM: Rev:F



LAYOUT AND CONNECTOR DIMENSIONS
For PCB hole diameters see table 1 sheet 1



LAYOUT AND CONNECTOR DIMENSIONS
For PCB hole diameters see table 1 sheet 1

www.fciconnect.com			surface - <input checked="" type="checkbox"/> tolerance std ISO 1302 ISO 406 ISO 1101		projection 		mm 	
TOLERANCES UNLESS OTHERWISE SPECIFIED								
Dr	M PESSON	2005-10-11	ANGULAR	LINEAR	0.X	±0.3	size A2	Scale 2:1
Eng	P LEGARE	2005-10-11			0.XX	±0.1		
Chr					0° ±2°	0.XXX		
Appr			Product family			- Spec ref		
			SUB FEMALE DW			C01-8639-2302		Rev. F
			mixed power straight solder					
catalog no						CUSTOMER		sheet 7 of 7