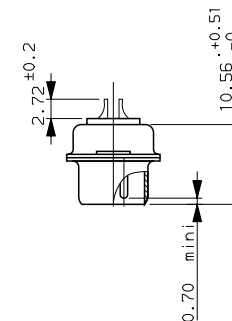


CHARACTERISTICS:

Max current rating:	7.5A per standard contact
Dielectric withstanding voltage:	1000V minimum
Insulation resistance:	≥5000MΩ
Contact resistance:	≤7.3mΩ
Mating and unmating forces:	conform to MILC24308
Contact retention:	40N for contact size 20
Material of -insulator:	green polyester class UL 94 V-0
-shell:	Steel
-contact:	brass
Plating of -shell:	cadmium-lead
-contact:	
mating area;	Ni 0.8μ mini + Au 0.4μ mini
termination area;	Ni 0.8μ mini + Sn Pb 2μ mini
Contact diameter:	1 mm
Temperature range:	-55°C,+125°C



Part number : DCM21WA4PN

a	28/09/99	creation of drawing .		--
ISS	DATE	Lastest modification by : JARRY		MOD N°
Designed by: JARRY		date:28/09/99		Type of drawing: CLIENT
Checked by : FONTENEAU		date: --		Released by: --
TITLE : PIN CONNECTOR WITH SOLDERED CONTACTS				
SCALE	Special mfg:--	MATERIAL:--		N°: --
1.5	item List n°: --	--		
	General Linear	General machining	Geometrical Tolerances	SHEET
	Tolerances: --	surface texture: <input checked="" type="checkbox"/>	see NF E 04-552	
		FRAMATOME CONNECTORS FRANCE		This document is the property of FRAMATOME CONNECTORS FRANCE. It must not be reproduced or communicated without permission in writing Flow the owners
		Rue Louis Breguet - BP 05 72024 LE MANS Cedex Tel. 33 (16) 43.84.08.43		
FORMAT	SOURIAU DRG N°		PROJECT	
A3	C01-8639-1698		M94D001	