

REFERENCE SPECIFICATIONS

• NFC 93425 (in compliance with NF 507)

PHYSICAL CHARACTERISTICS

- INSULATOR MATERIAL: THERMOPLASTIC UL94V0
- CONTACT MATERIAL: BRASS (SIGNAL CONTACT)
BRASS (POWER CONTACT)
- ACCESSORIES: BRASS
- SHELLS: STEEL

ELECTRICAL CHARACTERISTICS

- NOMINAL CURRENT: 7.5A (SIGNAL CONTACT)
30A or 40A (POWER CONTACT)
- CONTACT RESISTANCE: $\leq 7.3 \text{ m}\Omega$ (SIGNAL and POWER)
- CONTACT/CONTACT: $\geq 1000 \text{ V}$
- CONTACT/GROUND: $\geq 1200 \text{ V}$
- INSULATION RESISTANCE: $\geq 5000 \text{ MOhms}$
- CLIMATIC CATEGORY: 55/125/21
TEMPERATURE RANGE -55°C TO $+125^\circ\text{C}$
DAMP HEAT STEADY STATE 21 DAYS
SALT SPRAY 48 HOURS
- RETENTION AGAINST TORQUE: • Threaded insert: 0.7 N.m minimum
• Female screw: 0.5 N.m minimum

NOTE RoHS INFORMATION

- The "LF" products meet European Union Directives and other country regulations as described in GS-22-008.
- The housing will withstand exposure to 260°C peak temperature for 3.5 seconds in a wave solder application with a 1.6mm minimum thick circuit board. See application notes/procedures if they are available.
- Termination plating spec:
 - Signal contacts: Ni + Gold
 - Power contacts: Ni 1.27µm + Sn 2.5 to 7.5µm, pure bright
- Active area plating spec:
 - Signal and power contacts: Ni + Gold
- Shell plating: 2 to 4µm Cu + Nickel + 3 to 10µm Sn, pure bright
- Accessories: Sn pure bright + nickel
- Packaging spec: See GS-14-920

Series

DBL13W3P300G30LF

Shell size: E A B C D
see sheet 2

Front accessory definition
see sheet 2

- L : threaded insert M3
- O : threaded insert UNC 4-40
- V : female screw UNC 4-40

Layout of contacts (see sheet 3)

Contacts

- P : Pin

Termination type

- 3 : Straight version

Plating

- 00 : 200 matings/unmatings
- 43 : 500 matings/unmatings

PCB accessories definition
see sheet 2

- H : Metal brackets + harpoons for PCB 2.40mm
- G : Metal brackets + harpoons for PCB 1.60mm

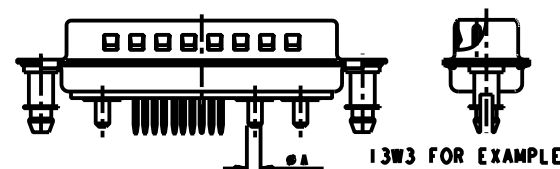
Power contacts



- 30 : Filled with power contacts 30 Amp.
- 40 : Filled with power contacts 40 Amp.

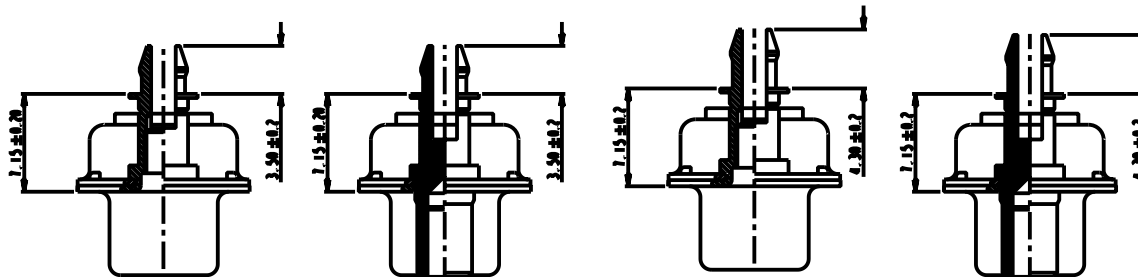
See note RoHS

TABLE 1: PCB HOLE DIAMETERS

POWER CONTACTS			ACCESSORIES	SIGNAL CONTACTS
30 A	2.00	Ø2.40	Ø3.10	Ø0.90 min
40 A	2.80	3.10		
Max current power	ØA ±0.1	PCB HOLE ±0.1	PCB HOLE ±0.1	PCB HOLE ±0.1



www.fciconnect.com			surface - <input checked="" type="checkbox"/> tolerance std ISO 1302 ISO 406 ISO 1101					mm		
			TOLERANCES UNLESS OTHERWISE SPECIFIED							
Dr	M PESSON	2005-10-11	ANGULAR		0.X	±0.3	size	A2	Scale	
Eng	P LEGARE	2005-10-11	LINEAR		0.XX	±0.1			2:1	
Chr			0° ±2°		0.XXX	±0.05	ECN	LS08-0067		
Appr			Product family				-	Spec ref		
			title SUB MALE DW			deg no C01-8639-2306		Rev.		
			mixed power straight solder			F		7		
			catalog no			CUSTOMER		sheet 1 of 7		



FRONT ACCESSORY	L insert M3 O insert UNC 4.40	V insert UNC 4.40	L insert M3 O insert UNC 4.40	V insert UNC 4.40
PCB ACCESSORIES	G Harpoon for PCB 1.60mm	G Harpoon for PCB 1.60mm	H Harpoon for PCB 2.40mm	H Harpoon for PCB 2.40mm

PART NUMBER	AMPS	RATINGS/ UNRATINGS	FRONT ACCESSORY	PCB ACCESSORIES
D=LxWxP300G30LF	30	200	insert M3	harpoon PCB 1.60mm
D=OxWxP300G30LF	30	200	insert UNC 4.40	harpoon PCB 1.60mm
D=VxWxP300G30LF	30	200	female screw UNC 4.40	harpoon PCB 1.60mm
D=LxWxP300H30LF	30	200	insert M3	harpoon PCB 2.40mm
D=OxWxP300H30LF	30	200	insert UNC 4.40	harpoon PCB 2.40mm
D=VxWxP300H30LF	30	200	female screw UNC 4.40	harpoon PCB 2.40mm
D=LxWxP300G40LF	40	200	insert M3	harpoon PCB 1.60mm
D=OxWxP300G40LF	40	200	insert UNC 4.40	harpoon PCB 1.60mm
D=VxWxP300G40LF	40	200	female screw UNC 4.40	harpoon PCB 1.60mm
D=LxWxP300H40LF	40	200	insert M3	harpoon PCB 2.40mm
D=OxWxP300H40LF	40	200	insert UNC 4.40	harpoon PCB 2.40mm
D=VxWxP300H40LF	40	200	female screw UNC 4.40	harpoon PCB 2.40mm

shell size LAYOUTS

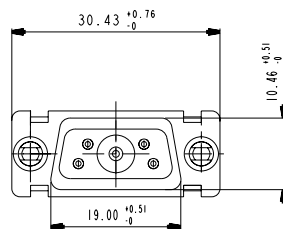
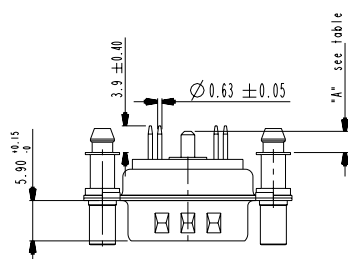
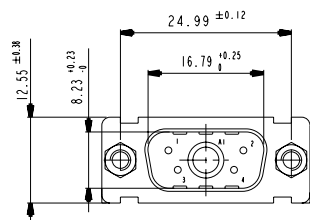
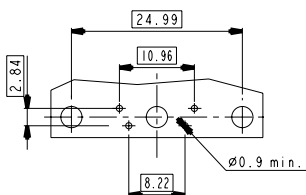
shell size	xWx
E	5W1
A	11W1
A	7W2
B	21W1
B	17W2
B	13W3
B	9W4
C	25W3
C	21WA4
C	27W2
D	47W1
D	24W7
D	36W4

PART NUMBER	AMPS	RATINGS/ UNRATINGS	FRONT ACCESSORY	PCB ACCESSORIES
D=LxWxP343G30LF	30	500	insert M3	harpoon PCB 1.60mm
D=OxWxP343G30LF	30	500	insert UNC 4.40	harpoon PCB 1.60mm
D=VxWxP343G30LF	30	500	female screw UNC 4.40	harpoon PCB 1.60mm
D=LxWxP343H30LF	30	500	insert M3	harpoon PCB 2.40mm
D=OxWxP343H30LF	30	500	insert UNC 4.40	harpoon PCB 2.40mm
D=VxWxP343H30LF	30	500	female screw UNC 4.40	harpoon PCB 2.40mm
D=LxWxP343G40LF	40	500	insert M3	harpoon PCB 1.60mm
D=OxWxP343G40LF	40	500	insert UNC 4.40	harpoon PCB 1.60mm
D=VxWxP343G40LF	40	500	female screw UNC 4.40	harpoon PCB 1.60mm
D=LxWxP343H40LF	40	500	insert M3	harpoon PCB 2.40mm
D=OxWxP343H40LF	40	500	insert UNC 4.40	harpoon PCB 2.40mm
D=VxWxP343H40LF	40	500	female screw UNC 4.40	harpoon PCB 2.40mm

SCALE: 4

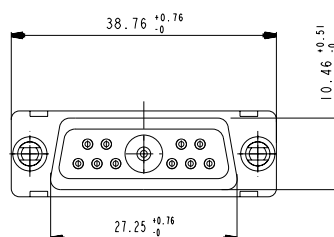
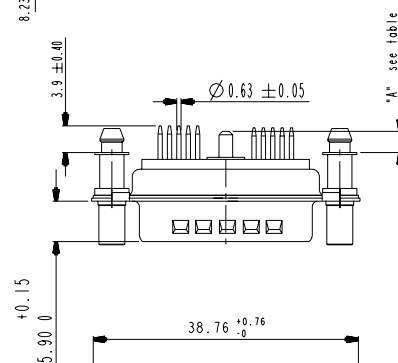
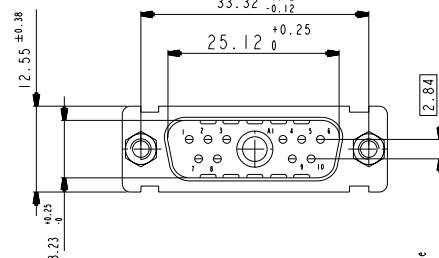
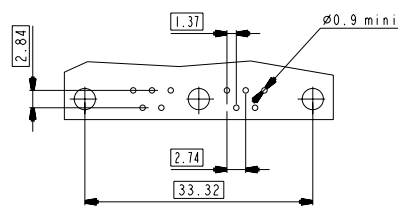
www.fciconnect.com		surface - ISO 1302	tolerance std ISO 406 ISO 1101	projection size A2	mm Scale 2:1
Dr M PESSON	2005-10-11	TOLERANCES UNLESS OTHERWISE SPECIFIED		ECN	LS08-0067
Eng P LEGARE	2005-10-11	ANGULAR	0.X ±0.3	Product family	Spec ref
Chr		LINEAR	0.XX ±0.1		
Appr		0° ±2°	0.XXX ±0.05		
SUB MALE DW		mixed power straight solder		C01-8639-2306	
catalog no		CUSTOMER		sheet 2 of 7	

5W1

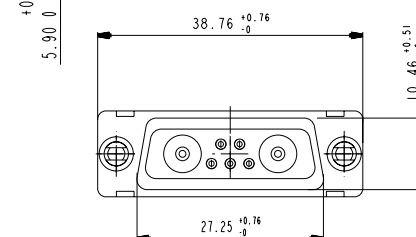
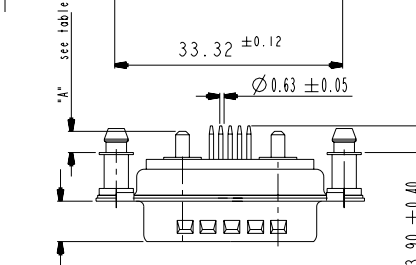
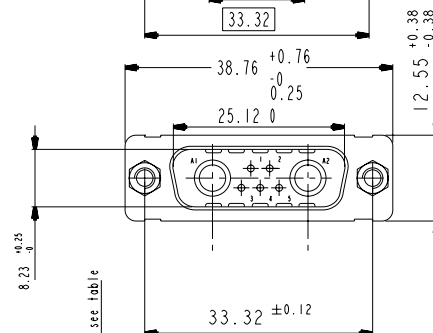
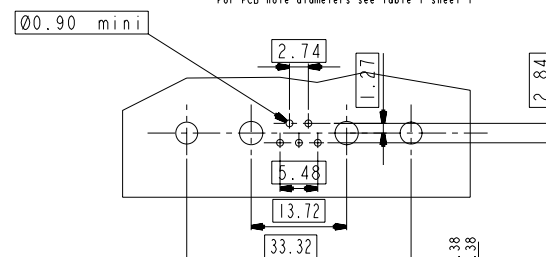
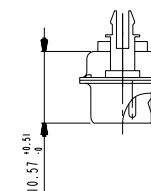
LAYOUT AND CONNECTOR DIMENSIONS
For PCB hole diameters see table 1 sheet 1

Floating signal contacts

11W1

LAYOUT AND CONNECTOR DIMENSIONS
For PCB hole diameters see table 1 sheet 1

7W2

LAYOUT AND CONNECTOR DIMENSIONS
For PCB hole diameters see table 1 sheet 1SIDE VIEW FOR
LAYOUTS: E A B C

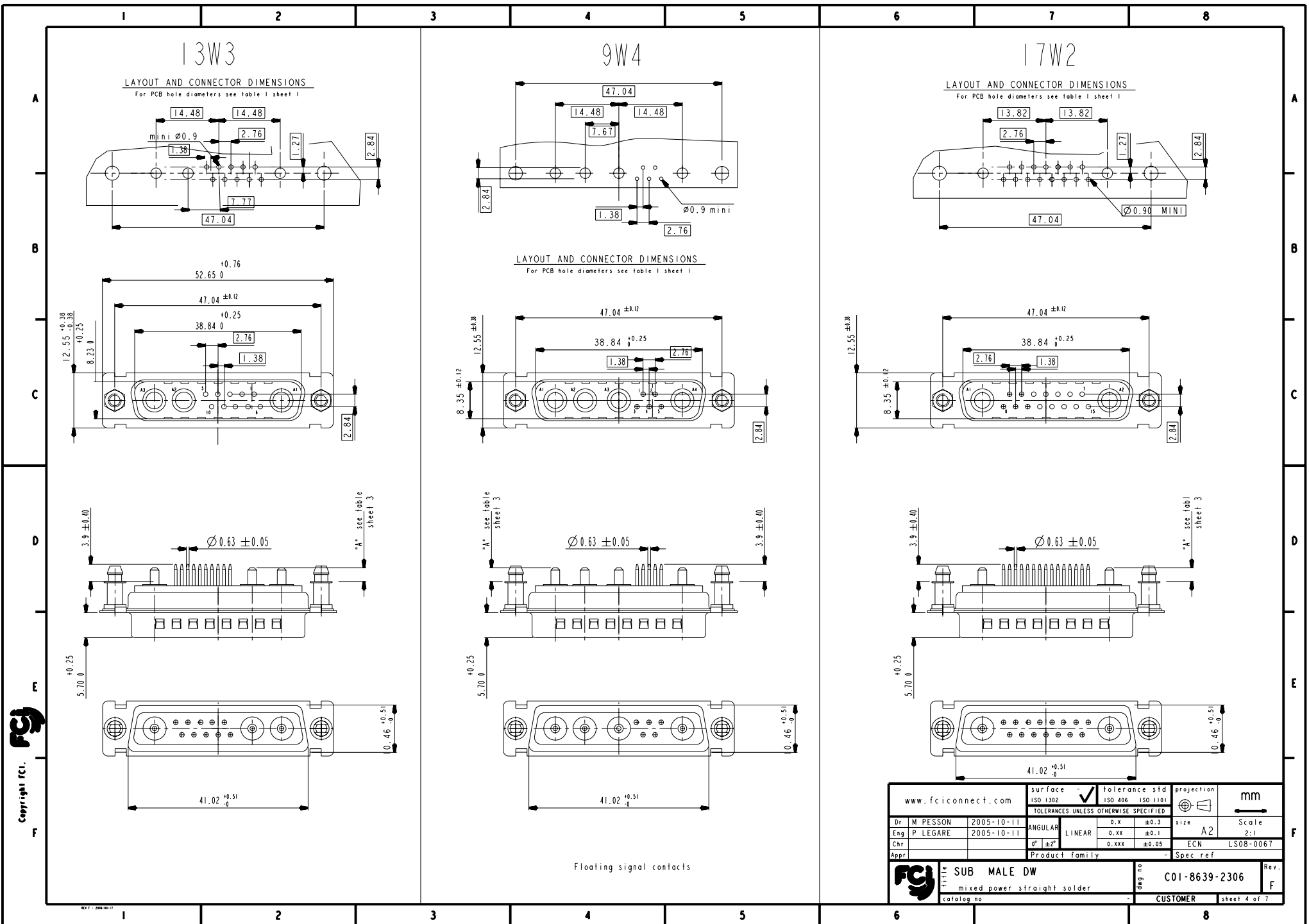
Cote "A"

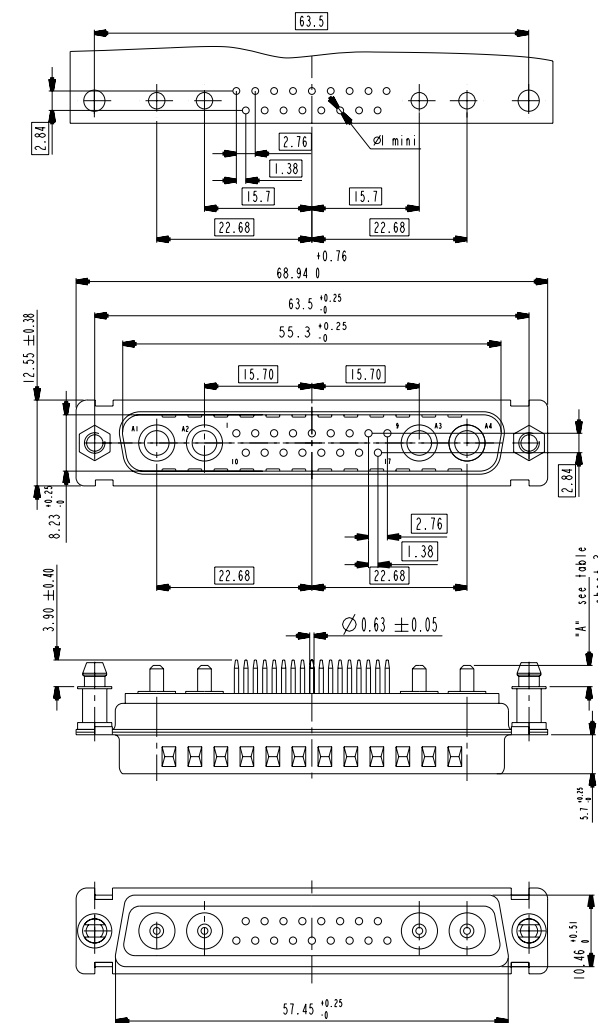
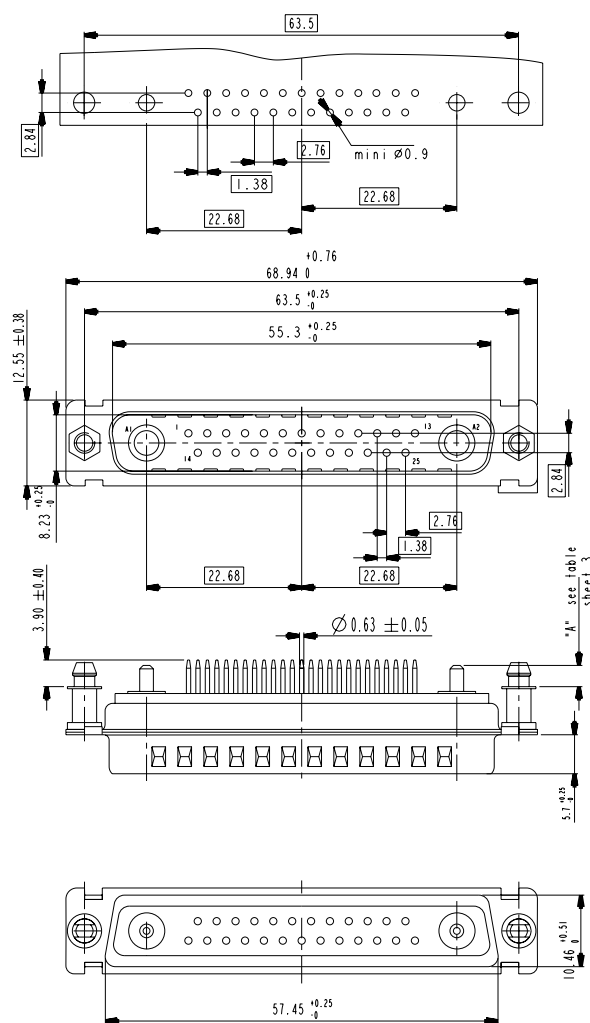
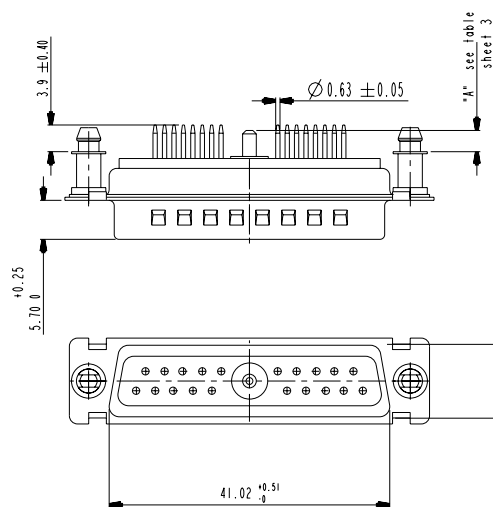
30A	3.1 ±0.25
40A	3.6 ±0.25





Copyright fci.

www.fciconnect.com		surface - ISO 1302	tolerance std ISO 406 ISO 1101	projection A2	mm
Dr M PESSON 2005-10-11		TOLERANCES UNLESS OTHERWISE SPECIFIED		size	Scale
Eng P LEGARE 2005-10-11		ANGULAR	0.X ±0.3	A2	2:1
Chr		LINEAR	0.XX ±0.1	ECN	LS08-0067
Appr		0° ±2°	0.XXX ±0.05	Spec ref	
Product family		SUB MALE DW		C01-8639-2306	
Title		mixed power straight solder		Rev. F	
catalog no		CUSTOMER		sheet 3 of 7	





www.fciconnect.com			surface <input checked="" type="checkbox"/> tolerance std ISO 1302 ISO 406 ISO 1101		projection 		mm	
TOLERANCES UNLESS OTHERWISE SPECIFIED								
Dr	M PESSON	2005-10-11	ANGULAR	LINEAR	0.X	±0.3	size	A2
Eng	P LEGRÉ	2005-10-11			0.XX	±0.1		
Chr			0° ±2°		0.XXX	±0.05	ECN	LS08-0067
Appr			Product family				- Spec ref	
			SUB MALE DW			C01-8639-2306		Rev.
mixed power straight solder			catlog no			CUSTOMER		F
catlog no						sheet 5 of 7		

