

66.55 ^{+0.76}/₋₀

55.07 ^{+0.51}/₀

13.31 ^{+0.51}/₀

2.84

10.64 ^{+0.52}/₋₀

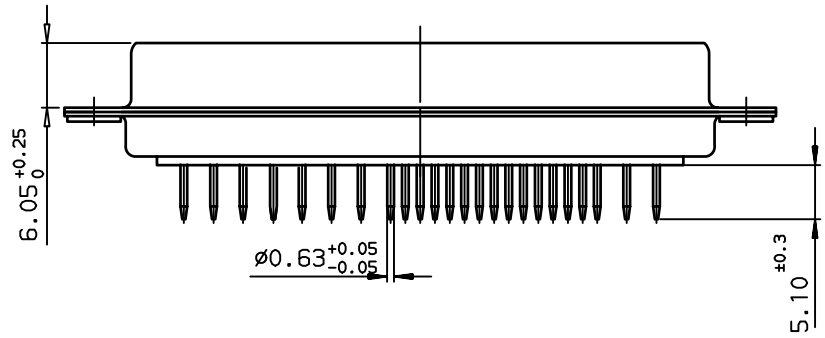
61.11 ±0.12

52.30 ^{+0.25}/₀

15.37 ±0.38

10.62 ^{+0.26}/₋₀

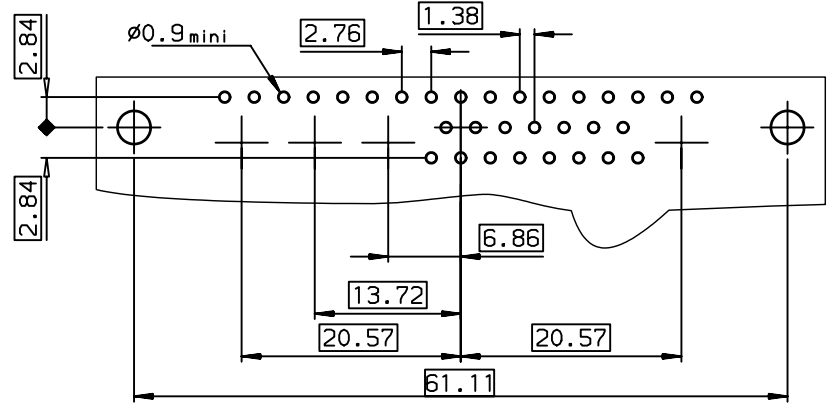
∅3 ^{+0.18}/₋₀



LAYOUT DIMENSIONS (after plating)
CONNECTOR SIDE VIEW

DD36W4S300A00LF
PART NUMBER

GENERAL CHARACTERISTICS AND ROHS INFORMATIONS:
SEE DRAWING C01-8639-0000



European Views

| | | | | | | | |
|--|--------|------------|-------------------------|-----------------------------------|------------------|------------------|------------|
| www.fciconnect.com | | | surface ISO 1302 ✓ | tolerance std ISO 406 ISO 1101 | projection mm | mm | |
| TOLERANCES UNLESS OTHERWISE SPECIFIED | | | | | | size A3 | |
| Dr | PESSON | 2001/02/20 | ANGULAR | 0.X | ±0.1 | Scale 2 | |
| Eng | PESSON | 2001/02/20 | LINEAR | 0.XX | ±0.1 | ECN LS06-0095 | |
| Chr | LEGARE | 2001/02/20 | | 0.XX' ±2' | 0.XXX | ±0.1 | Spec ref - |
| Appr | LEGARE | 2001/02/20 | Product family D-SUB | | | - | |
| FCJ title SOCKET CONNECTOR WITH STRAIGHT SPILL | | | dwg no C01-8639-2272 | | | Rev. B | |
| catalog no | | | CUSTOMER | | | sheet 1 of 1 | |

| rev | ecn no | dr | date |
|-----|-----------|-----|------------|
| A | LS05-0106 | MPE | 2005/12/01 |
| B | LS06-0095 | LGO | 2006/06/17 |
| - | - | - | - |
| - | - | - | - |
| - | - | - | - |
| - | - | - | - |

Copyright FCI. FCJ