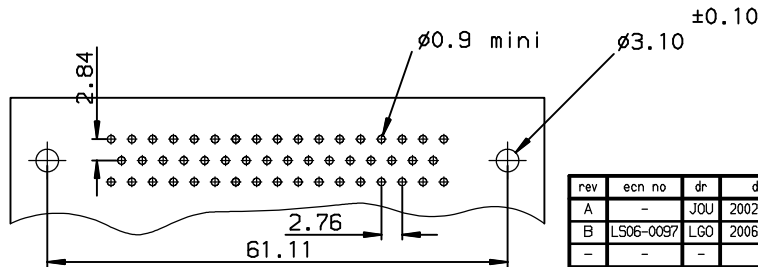
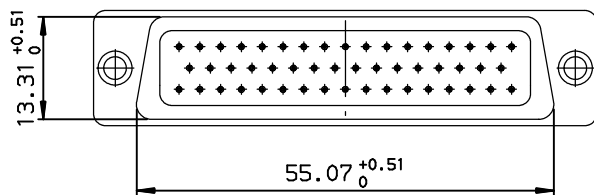
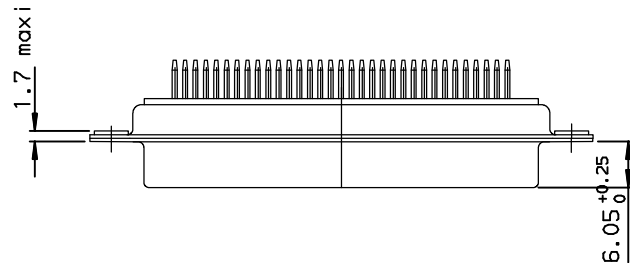
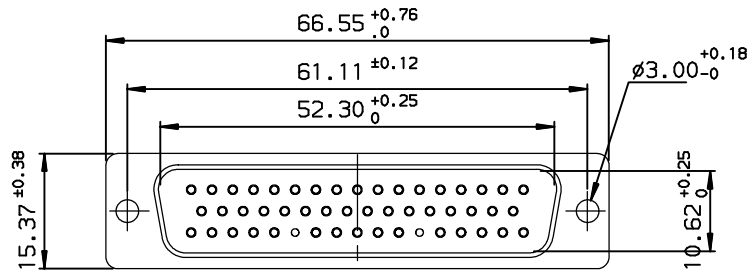




Copyright FCI.



Dimensions are in millimeters

REV F - 2006-04-17

ELECTRICAL DATA

-I max	7.5A
-Contact resistance	≤7.3mΩ
-Insulation resistance	≥5000MΩ
-TEST VOLTAGE	
contact/contact	≥1000V
contact/ground	≥1200V

MECHANICAL DATA




-Contact force	≥0.20N
-Retention force	≥20N
-Insertion force	according to DIN41652 Part 2
-Withdrawal force	according to DIN41652 Part 2
-Mechanical endurance	:500
-Material shell	steel
-Material insulator	glass filled thermoplastic UL94V0
-Material contacts	phosphor bronze
-Finish on contact area	gold over nickel (see table)
-Finish on termination end	bright tin-lead over nickel
-Solderability	according to DIN 41640 Part 70, test 12a
-Schock	according to DIN41640 Part 14, test 6c,50g
-Vibration	according to DIN41640 Part 15, test 6d,20g 10 to 2000Hz;discontinuity≤1μs

ENVIRONMENTAL DATA

-Climatic category	-55°/125°/56
-Corrosion	salt spray:48h

PART NUMBER	PLATING
DDM50S300	0.4μ Gold
DDM50S352	1.25μ Gold

European Views

www.fciconnect.com			surface ISO 1302 ✓		tolerance std ISO 406 ISO 1101		projection  mm 		
			TOLERANCES UNLESS OTHERWISE SPECIFIED						
Dr	JOUBERT	2002/04/11	ANGULAR 0.XX' ±2°	LINEAR	0.X	±0.1	size	Scale	
Eng	PESSON	2002/04/11			0.XX	±0.1	A3	1.5	
Chr	LEGARE	2002/04/11			0.XXX	±0.1	ECN	LS06-0097	
Appr	LEGARE	2002/04/11	Product family		D-SUB	Spec ref -			
			title SOCKETS CONNECTORS D SUBMINIATURE WITH STRAIGHT SPILLS				dwg no C01-8637-1584_100		Rev. B
catalog no			-		CUSTOMER		sheet 1 of 1		

PDM: Rev:B

STATUS:Released

Printed: Aug 27, 2006