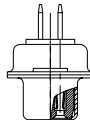
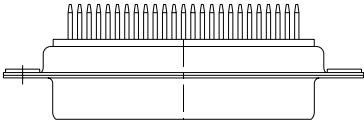


	I	2	3	4	5	6	7	8																																																																																																																									
A	<div>REFERENCE SPECIFICATIONS</div> <div>-NFC 93425 (in compliance with HE 501)</div> <div>PHYSICAL CHARACTERISTICS</div> <div>-INSULATOR MATERIAL: THERMOPLASTIC UL94V0</div> <div>-CONTACT MATERIAL: PHOSPHOR BRONZE</div> <div>GOLD OVER NICKEL</div> <div>ACCESSORIES: BRASS ,cadmium plated yellow passivation</div> <div>SHELLS: STEEL ,cadmium plated yellow passivation</div> <div>ELECTRICAL CHARACTERISTICS</div> <div>-NOMINAL CURRENT: 7.5A</div> <div>-CONTACT RESISTANCE: &lt;= 7.3 m ohms</div> <div>-CONTACT/CONTACT : &gt;=1000 V</div> <div>-CONTACT/GROUND : &gt;=1200 V</div> <div>-INSULATION RESISTANCE: &gt;=5000 MOhms</div> <div>ENVIRONMENTAL CHARACTERISTICS</div> <div>- CLIMATIC CATEGORY: 55/125/56</div> <div>TEMPERATURE RANGE -55°C TO +125°C</div> <div>DAMP HEAT STEADY STATE 56 DAYS</div> <div>SALT SPRAY 48 HOURS</div> <div>MECHANICAL CHARACTERISTICS</div> <div>- RETENTION AGAINST TORQUE: - Threaded insert: 0.7 N.m minimum</div> <div>- Female screw : 0.5 N.m minimum</div>			<div>Series</div> <div>DBML25S300</div> <div>Shell size: E A B C D</div> <div>see sheet 2</div> <div>Front accessory definition</div> <div>see sheet 2</div> <div>Blank :without accessory</div> <div>F :floating mounting</div> <div>L :threaded insert M3</div> <div>O :threaded insert UNC 4-40</div> <div>V :female screw UNC 4-40</div> <div>S :spacer</div> <div>Contact number (see sheet 2)</div> <div>9,15,25,37,50</div> <div>Contacts</div> <div>S :Socket</div> <div>Termination type</div> <div>3 :Straight version</div> <div>Plating</div> <div>00 : 500 matings/unmatings</div> <div>43 : 500 matings/unmatings for harsh environment</div>					A																																																																																																																								
B									B																																																																																																																								
C									C																																																																																																																								
D									D																																																																																																																								
E				<div></div> <div>25 WAY for Example</div> <table><tr><td colspan="4">www.fciconnect.com</td><td colspan="2">surface</td><td colspan="2">tolerance std</td><td colspan="2">projection</td><td colspan="2">mm</td></tr><tr><td colspan="4"></td><td colspan="2">ISO 1302</td><td colspan="2">ISO 406 ISO 1101</td><td colspan="2"></td><td colspan="2"></td></tr><tr><td colspan="4"></td><td colspan="2">TOLERANCES UNLESS OTHERWISE SPECIFIED</td><td colspan="2"></td><td colspan="2"></td><td colspan="2"></td></tr><tr><td colspan="4">Dr M PESSON 2006/11/06</td><td colspan="2">ANGULAR</td><td colspan="2">0.X ±0.3</td><td colspan="2">size A2</td><td colspan="2">Scale 2:1</td></tr><tr><td colspan="4">Eng P LEGARE 2006/11/06</td><td colspan="2">LINEAR</td><td colspan="2">0.XX ±0.1</td><td colspan="2"></td><td colspan="2"></td></tr><tr><td colspan="4">Chr P LEGARE 2006/11/06</td><td colspan="2">0° ±2°</td><td colspan="2">0.XXX ±0.05</td><td colspan="2">ECN LS07-0273</td><td colspan="2"></td></tr><tr><td colspan="4">Appr P LEGARE 2006/11/06</td><td colspan="2">Product family</td><td colspan="2"></td><td colspan="2">Spec.ref</td><td colspan="2"></td></tr><tr><td colspan="4"></td><td colspan="2">SUB FEMALE DM HE501 series</td><td colspan="2">deg no C01-8637-1734</td><td colspan="2">Rev. B</td><td colspan="2"></td></tr><tr><td colspan="4"></td><td colspan="2">with straight solder contact</td><td colspan="2"></td><td colspan="2"></td><td colspan="2"></td></tr><tr><td colspan="4"></td><td colspan="2">catalog no</td><td colspan="2"></td><td colspan="2">CUSTOMER</td><td colspan="2">sheet 1 of 4</td></tr></table>					www.fciconnect.com				surface		tolerance std		projection		mm						ISO 1302		ISO 406 ISO 1101										TOLERANCES UNLESS OTHERWISE SPECIFIED								Dr M PESSON 2006/11/06				ANGULAR		0.X ±0.3		size A2		Scale 2:1		Eng P LEGARE 2006/11/06				LINEAR		0.XX ±0.1						Chr P LEGARE 2006/11/06				0° ±2°		0.XXX ±0.05		ECN LS07-0273				Appr P LEGARE 2006/11/06				Product family				Spec.ref								SUB FEMALE DM HE501 series		deg no C01-8637-1734		Rev. B								with straight solder contact												catalog no				CUSTOMER		sheet 1 of 4		E
www.fciconnect.com				surface		tolerance std		projection		mm																																																																																																																							
				ISO 1302		ISO 406 ISO 1101																																																																																																																											
				TOLERANCES UNLESS OTHERWISE SPECIFIED																																																																																																																													
Dr M PESSON 2006/11/06				ANGULAR		0.X ±0.3		size A2		Scale 2:1																																																																																																																							
Eng P LEGARE 2006/11/06				LINEAR		0.XX ±0.1																																																																																																																											
Chr P LEGARE 2006/11/06				0° ±2°		0.XXX ±0.05		ECN LS07-0273																																																																																																																									
Appr P LEGARE 2006/11/06				Product family				Spec.ref																																																																																																																									
				SUB FEMALE DM HE501 series		deg no C01-8637-1734		Rev. B																																																																																																																									
				with straight solder contact																																																																																																																													
				catalog no				CUSTOMER		sheet 1 of 4																																																																																																																							
F									F																																																																																																																								
	I	2	3	4	5	6	7	8																																																																																																																									

Copyright FCI.

REV 7 - 2006-04-17

PDM: Rev:B

STATUS:Released

Printed: Nov 23, 2007

1 2 3 4 5 6 7 8

A

B

C

D

E

F

A

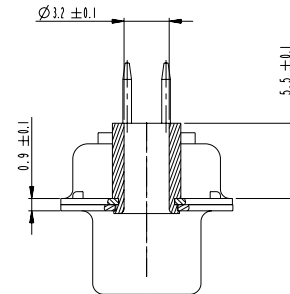
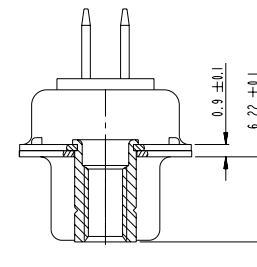
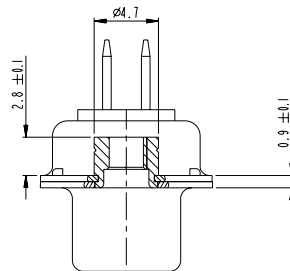
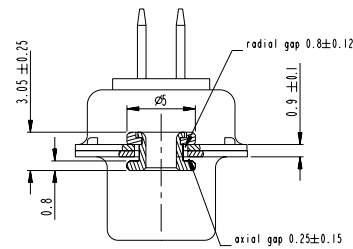
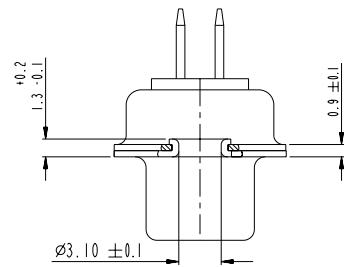
B

C

D

E

F



FRONT  
ACCESSORY

Blank without

F floating mounting

L insert M3  
O insert UNC 4.40

V female screw UNC 4.40

S spacer

PART NUMBER	FRONT ACCESSORY
D*MxxS300	without
D*MFxxS300	floating mounting
D*MLxxS300	insert M3
D*MOxxS300	insert UNC 4.40
D*MVxxS300	female screw UNC 4.40
D*MSxxS300	spacer

PART NUMBER	FRONT ACCESSORY
D*MxxS343	without
D*MFxxS343	floating mounting
D*MLxxS343	insert M3
D*MOxxS343	insert UNC 4.40
D*MVxxS343	female screw UNC 4.40
D*MSxxS343	spacer

shell size Contact number

#	XX
E	09
A	15
B	25
C	37
D	50

CROSS REFERENCES HE501 and FC1

HE501 P/N	FC1 P/N	FRONT ACCESSORY
HE501NxxYS4	D*MxxS300	without
HE501FxxYS4	D*MFxxS300	floating mounting

SCALE: 4

www.fciconnect.com		surface ISO 1302	tolerance std ISO 406 ISO 1101	projection size A2	mm Scale 2:1
		TOLERANCES UNLESS OTHERWISE SPECIFIED			
Dr	M PESSON	2006/11/06	ANGULAR	0.X ±0.3	
Eng	P LEGARE	2006/11/06	LINEAR	0.XX ±0.1	
Chr	P LEGARE	2006/11/06	0° ±2°	0.XXX ±0.05	ECN LS07-0273
Appr	P LEGARE	2006/11/06	Product family	Spec ref	
FCI		SUB FEMALE DM HE501 series with straight solder contact		cat no C01-8637-1734	Rev. B
				CUSTOMER	sheet 2 of 4



Copyright FCI.

REV 7 - 2006-04-17

1 2 3 4 5 6 7 8

PDM: Rev:B

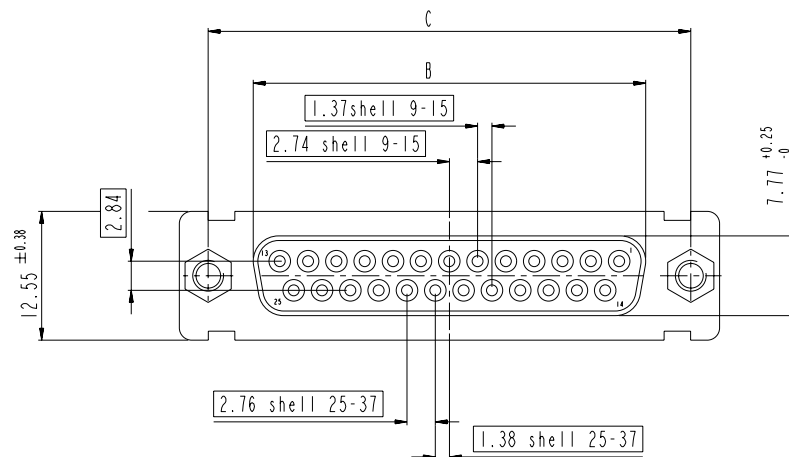
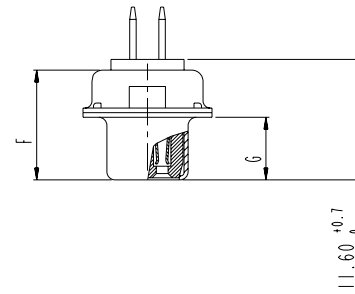
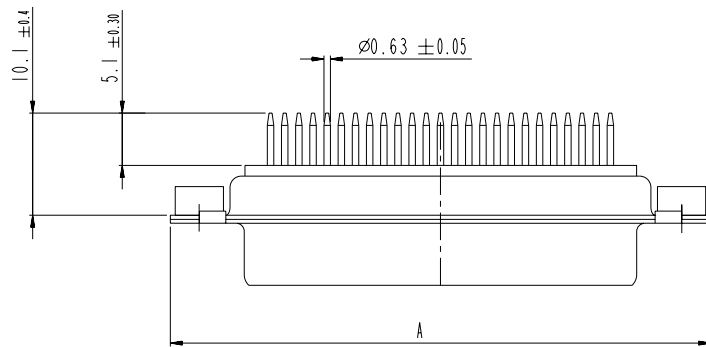
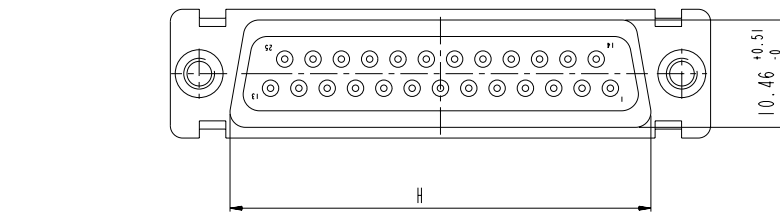
STATUS:Released

Printed: Nov 23, 2007

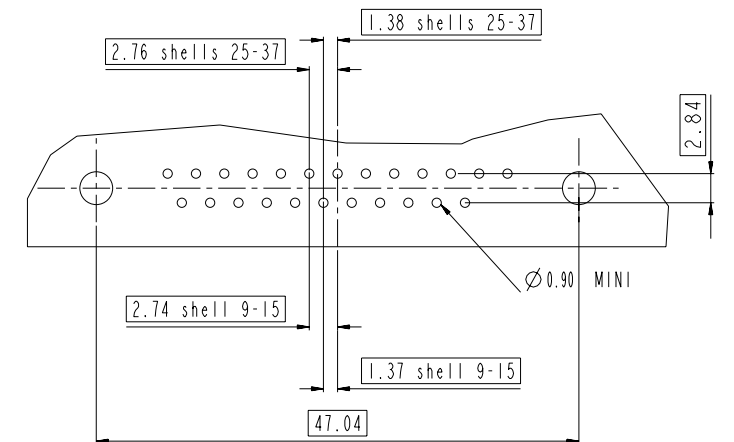
# DIMENSIONS FOR SHELL E,A,B,C

Dimensions are in millimeters

Shell size	Number of contacts	A <sup>+0.76</sup> <sub>-0</sub>	B <sup>+0.25</sup> <sub>-0</sub>	C $\pm 0.12$	F <sup>+0.57</sup> <sub>-0</sub>	G <sup>+0.25</sup> <sub>-0</sub>	H <sup>+0.51</sup> <sub>-0</sub>
E	09	30.43	16.21	24.99	10.64	6.05	19.02
A	15	38.76	24.54	33.32	10.64	6.05	27.25
B	25	52.65	38.25	47.04	10.64	6.05	41.02
C	37	68.94	54.71	63.50	10.64	6.05	57.45



## LAYOUT AND CONNECTOR DIMENSIONS



www.fciconnect.com		surface	ISO 1302	tolerance std	ISO 406	ISO 1101	projection	mm
		TOLERANCES UNLESS OTHERWISE SPECIFIED					size	Scale
Dr	M PESSON	2006/11/06	ANGULAR	0.X	±0.3			
Eng	P LEGARE	2006/11/06	LINEAR	0.XX	±0.1			
Chr	P LEGARE	2006/11/06	0° ±2°	0.XXX	±0.05		ECN	LS07-0273
Appr	P LEGARE	2006/11/06	Product family				Spec ref	
FCI		SUB FEMALE DM HE501 series		with straight solder contact		C01-8637-1734		Rev. B
		catalog no				CUSTOMER		sheet 3 of 4

