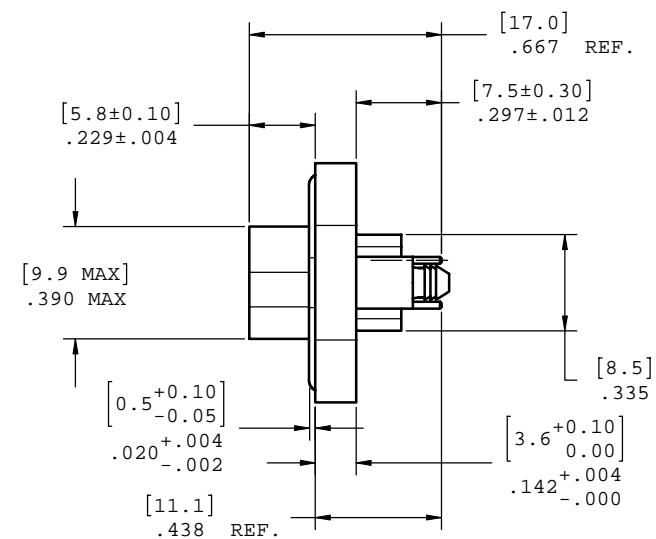
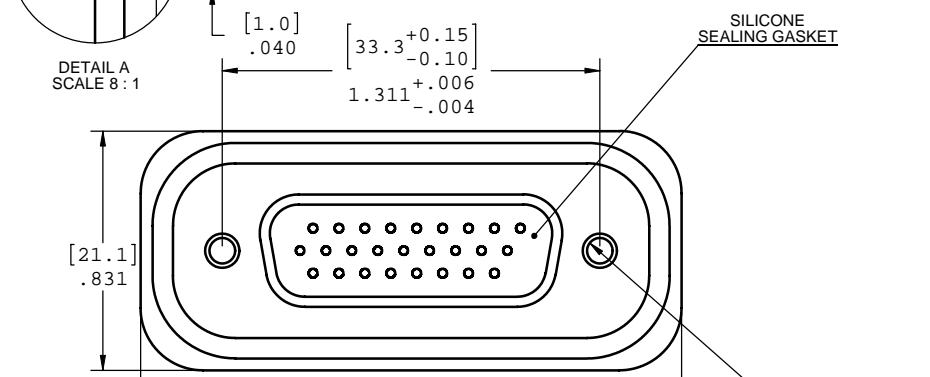
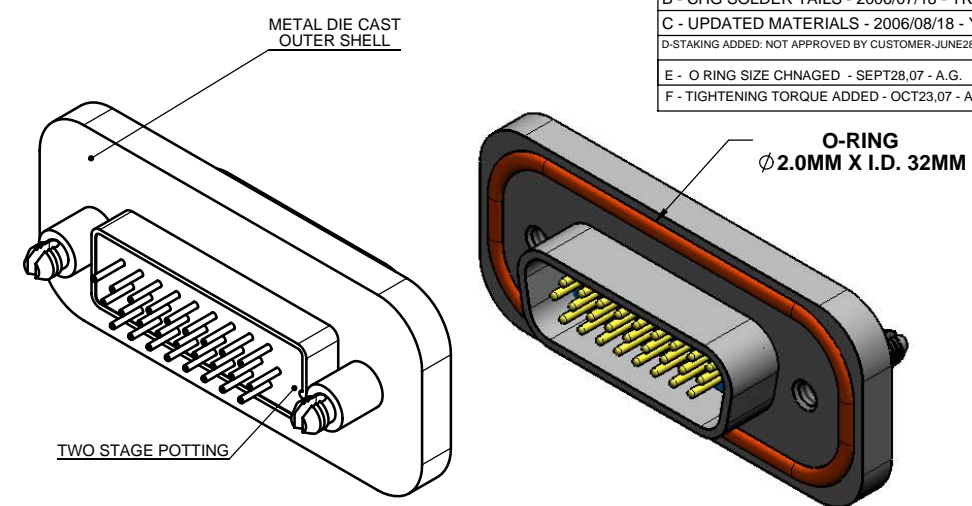
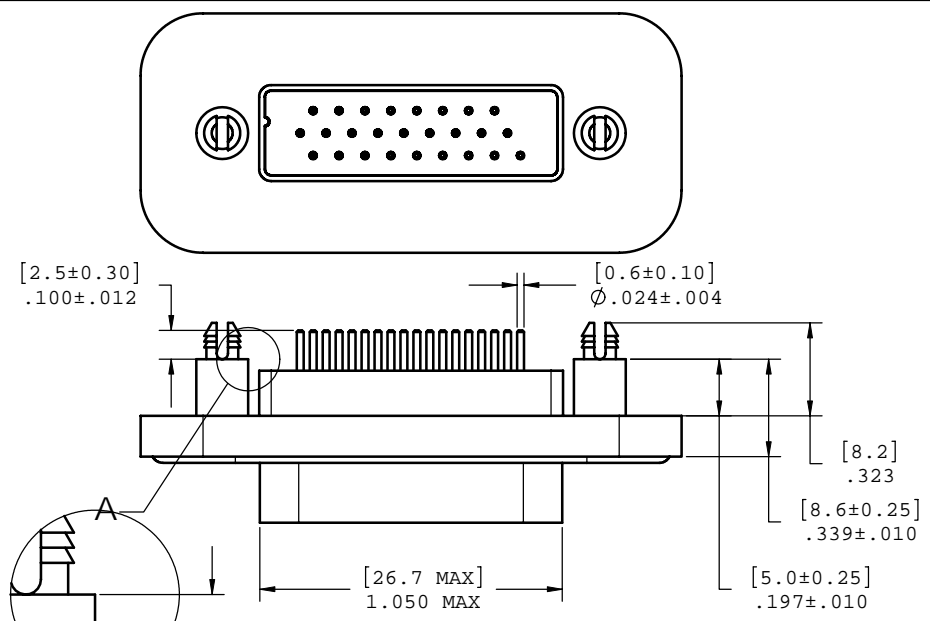


REV - DESCRIPT - DATE - APPRVD
A - UPDATED NOTES - 2006/06/16 - YK.
B - CHG SOLDER TAILS - 2006/07/18 - YK.
C - UPDATED MATERIALS - 2006/08/18 - YK.
D-STAKING ADDED: NOT APPROVED BY CUSTOMER-JUNE28,07-A.G.
E - O RING SIZE CHNAGED - SEPT28,07 - A.G.
F - TIGHTENING TORQUE ADDED - OCT23,07 - A.G.

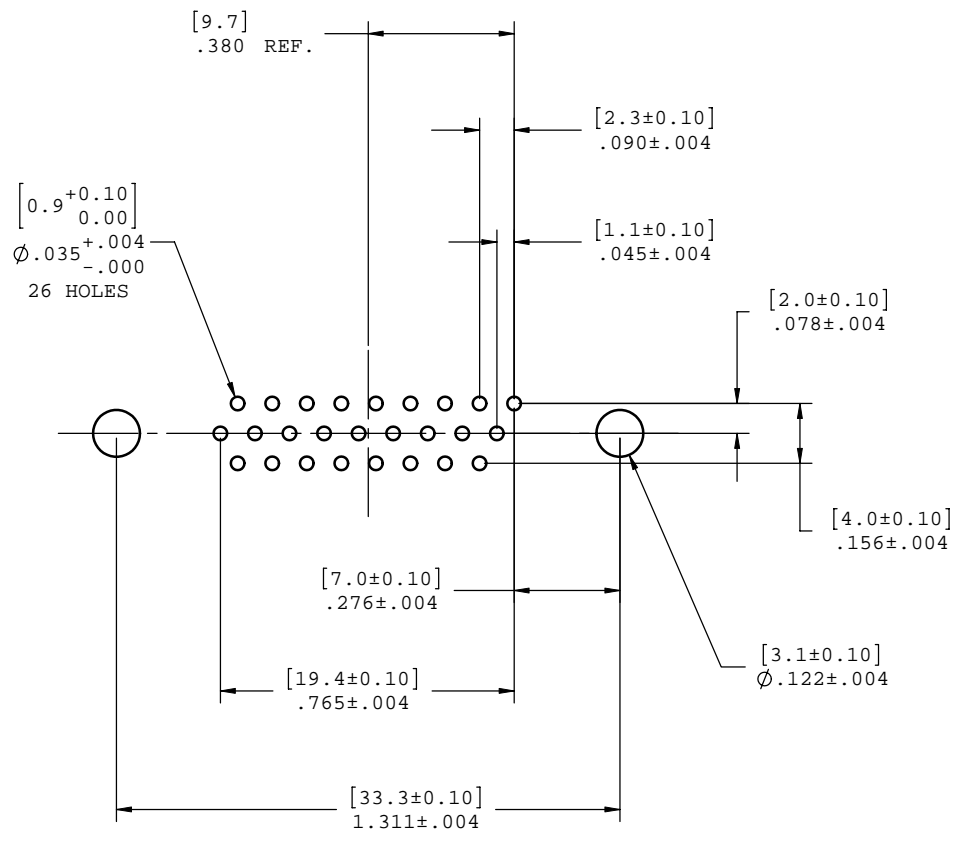


- NOTES:
- MATERIAL:
    - SHELL: ZINC ALLOY 50 MICRO INCH MINIMUM NICKEL PLATING.
    - CONTACTS: COPPER ALLOY 30 MICRO INCH GOLD OVER 50 MICRO INCH NICKEL PLATING.
    - INSULATOR: THERMOPLASTIC POLYESTER RESIN (DSM) 94V-0 FLAMMABILITY RATING.
    - GASKETS: SILICONE RUBBER S7001R, 70 DUROMETER.
    - SEALING COMPOUND: STYCAST 2651 WITH CATALYST 11
  - FEATURES: SEALED CONNECTOR IN THE MATED AND UNMATED CONDITIONS.
  - OPERATING TEMPERATURE: -40°C TO +105°C.
  - ENVIRONMENT PERFORMANCE: IP67.
  - PART IS RoHS COMPLIANT.
  - REAR SEAL TO WITHSTAND TEMPERATURE EXPOSURE OF SOLDER BATH 265°C FOR 8 SEC & SOLDER PREHEAT 150°C FOR 180 SEC.
  - SEALED TO WITHSTAND PRESSURE UP TO 5 PSI AFTER HIGH TEMPERATURE EXPOSURE.
  - RECOMMENDED TORQUE FOR SCREW TIGHTENING:
    - STEEL SCREW WITH MORE THAN .090" OF THREAD ENGAGEMENT: 4.0 TO 5.75 IN-LBS.
    - BRASS SCREW: 3.1 TO 4.5 IN-LBS.

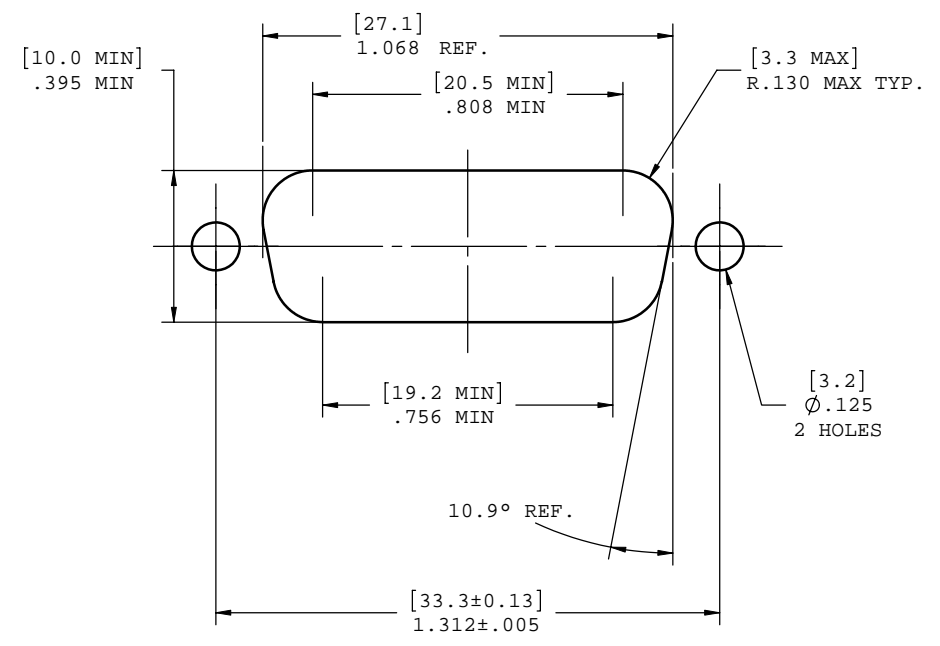
AMPHENOL PART NUMBER: MDB-A26PE-860



UNLESS OTHERWISE SPECIFIED DIMENSIONS ARE IN MILLIMETER TOLERANCES ARE:		APPROVALS	DATE	Amphenol Canada Corp.	
DECIMALS	ANGLES	DRAWN	DESIGNED		
.XX ±.10	± 1°	Y.KUZYK	S.SEMENOV	TITLE	
.X ±.25				26 PIN CONNECTOR	
MATERIAL AND FINISH		CHECKED		SIZE	DWG. NO.
		QA APP'D		C	P-MDB-A26PE-860
REF.		IE APP'D		SCALE	PROJECT
CODE IDENT. NO.		DWG APP'D	2006/07/24	1:0.333333	MDB-A26
				SHEET	REV. F
				1 OF 2	



PCB LAYOUT



EXISTING PANEL CUTOUT



UNLESS OTHERWISE SPECIFIED DIMENSIONS ARE IN MILLIMETER TOLERANCES ARE:		APPROVALS	DATE	Amphenol Canada Corp.		
DECIMALS	ANGLES	DRAWN	DATE			
.XX ±.10	± 1°	Y.KUZYK	2006/07/24	TITLE 26 PIN CONNECTOR		
.X ±.25		DESIGNED	2006/07/24			
MATERIAL AND FINISH		CHECKED		SIZE	DWG. NO.	
		QA APP'D		C	P-MDB-A26PE-860	
		IE APP'D		SCALE	PROJECT	REV.
		DWG APP'D	2006/07/24	4:1	MDB-A26	F
REF.	CODE IDENT. NO.			SHEET		
				2 OF 2		

DO NOT SCALE DRAWING  
 THIS DOCUMENT CONTAINS PROPRIETARY INFORMATION AND SUCH INFORMATION MAY NOT BE DISCLOSED TO OTHERS FOR ANY PURPOSE OR USED FOR MANUFACTURING PURPOSES WITHOUT PERMISSION FROM AMPHENOL CANADA CORP.

