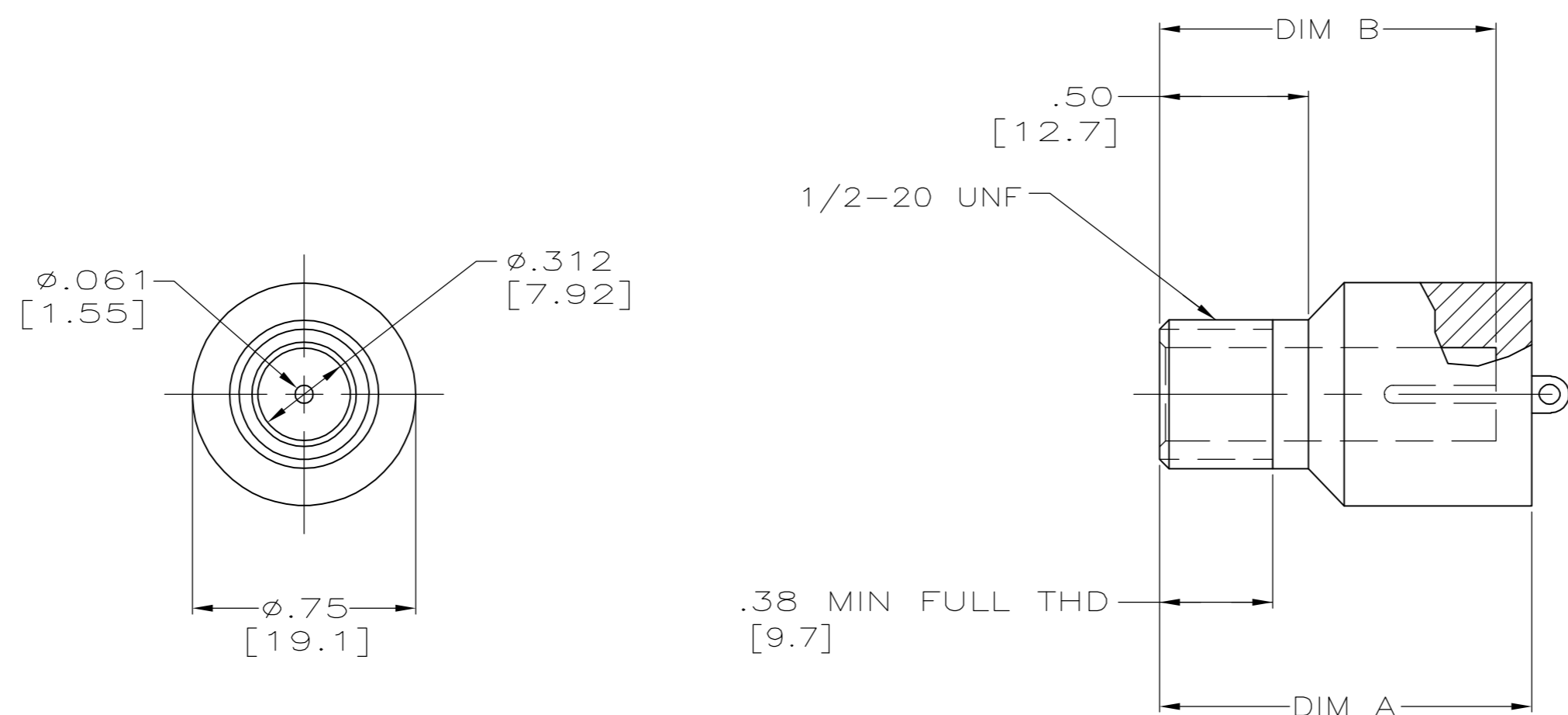


THIS DRAWING IS UNPUBLISHED. RELEASED FOR PUBLICATION - .N/A .
 © COPYRIGHT N/A BY TYCO ELECTRONICS CORPORATION. ALL RIGHTS RESERVED.

LOC	DIST	REVISIONS					
DF	S0	P	LTR	DESCRIPTION	DATE	DWN	APVD
		M		REV PER 0H14-0191-05	05-05	AA	DE

1. MARKED PER MIL-STD-130.
2. RECEPTACLE TO MATE WITH AMP LGH-1 LEAD ASSEMBLY, AVAILABLE SEPARATELY.



-	TIN PLATED	.75 [19.1]	.88 [22.4]	5-850306-4
-	TIN PLATED	.88 [22.4]	1.00 [25.4]	5-850306-3
OBSOLETE	GOLD PLATED	.75 [19.1]	.88 [22.4]	850306-8
OBSOLETE	GOLD PLATED	.88 [22.4]	1.00 [25.4]	850306-7
OBSOLETE	GOLD PLATED	1.00 [25.4]	1.12 [28.4]	850306-6
OBSOLETE	GOLD PLATED	1.12 [28.4]	1.25 [31.8]	850306-5
-	TIN-LEAD PLATED	.75 [19.1]	.88 [22.4]	850306-4
-	TIN-LEAD PLATED	.88 [22.4]	1.00 [25.4]	850306-3
OBSOLETE	TIN-LEAD PLATED	1.00 [25.4]	1.12 [28.4]	850306-2
OBSOLETE	TIN-LEAD PLATED	1.12 [28.4]	1.25 [31.8]	850306-1
REMARKS	PIN FINISH	DIM B	DIM A	PART NUMBER

THIS DRAWING IS A CONTROLLED DOCUMENT.		DWN C.C.THOMAS 28-OCT-96	Tyco Electronics Corporation Harrisburg, Pa 17105-3608																			
DIMENSIONS: INCHES		CHK S.GLATFELTER 31-OCT-96																				
TOLERANCES UNLESS OTHERWISE SPECIFIED:		APVD S.GLATFELTER 31-OCT-96	NAME RECEPTACLE MOLDED LGH-1																			
<table border="0"> <tr><td>0 PLC</td><td>±</td><td>-</td></tr> <tr><td>1 PLC</td><td>±</td><td>-</td></tr> <tr><td>2 PLC</td><td>±</td><td>.02[0.5]</td></tr> <tr><td>3 PLC</td><td>±</td><td>.005[0.13]</td></tr> <tr><td>4 PLC</td><td>±</td><td>-</td></tr> <tr><td>ANGLES</td><td>±</td><td>-</td></tr> </table>		0 PLC	±	-	1 PLC	±	-	2 PLC	±	.02[0.5]	3 PLC	±	.005[0.13]	4 PLC	±	-	ANGLES	±	-	PRODUCT SPEC -	SIZE A2	CAGE CODE 00779
0 PLC	±	-																				
1 PLC	±	-																				
2 PLC	±	.02[0.5]																				
3 PLC	±	.005[0.13]																				
4 PLC	±	-																				
ANGLES	±	-																				
MATERIAL GLASS EPOXY COLOR: BLACK		FINISH -	APPLICATION SPEC -	DRAWING NO C=850306																		
		WEIGHT -	RESTRICTED TO -																			
		CUSTOMER DRAWING		SCALE 2:1																		
		SHEET 1 OF 1		REV M																		

850306