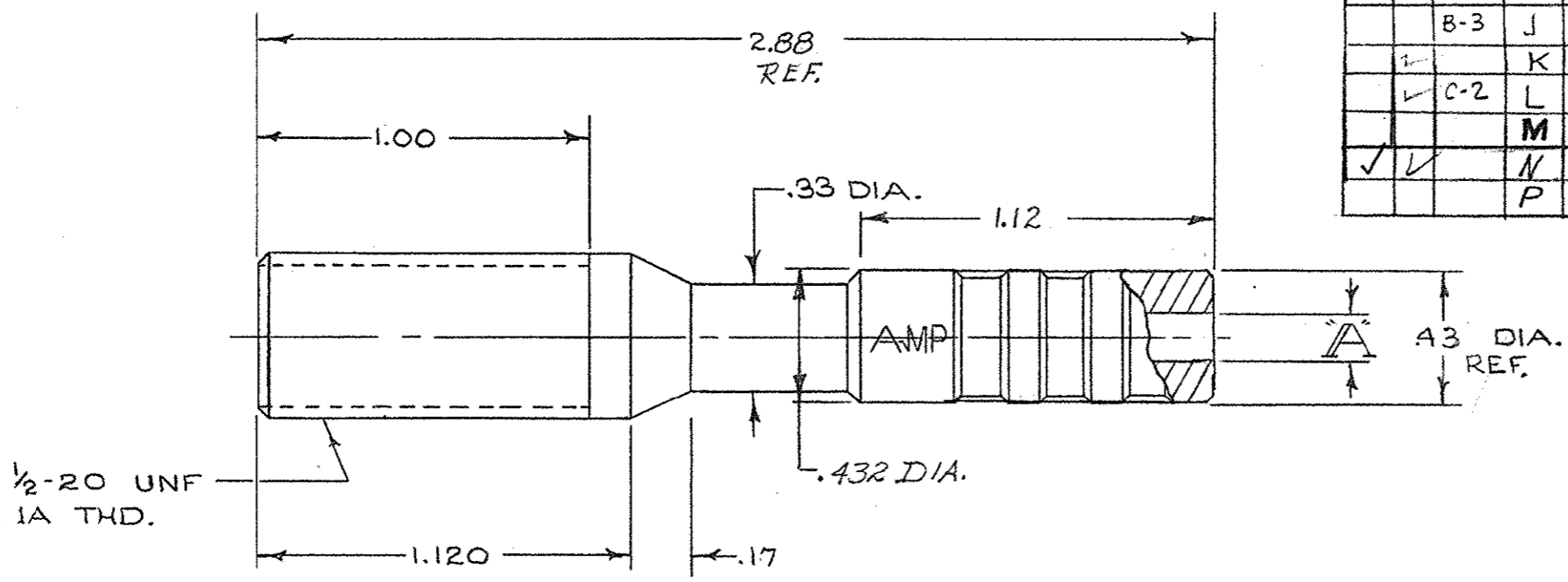


© COPYRIGHT 1973 BY AMP INCORPORATED, HARRISBURG, PA.
 ALL INTERNATIONAL RIGHTS RESERVED. AMP INCORPORATED PRODUCTS
 COVERED BY U. S. AND FOREIGN PATENTS AND/OR PATENTS PENDING.

REVISIONS						
P	F	ZONE	LTR	DESCRIPTION	DATE	APPROVED
			A	WAS SK-37508	10-16-73	H. Hermann
			B	REV. NOTE 2	10-24-73	H. Hermann
			C	ADDED NOTES F-3 TRWU-6 REV. NOTE 2	11-21-73	JPA
			D	ADDED MARKING (AMP)	11-17-74	H. Hermann
			E	REV. PER ECN 4322	4-10-74	H. Hermann
			F	ADDED NOTE 4	8-12-74	H. Hermann
			G	ADDED -7 & -8	12-10-75	JPA
			H	66400-1 WAS 66332-1 66099-2 WAS 66098-2	1-14-77	M.S.
		B-3	J	.17 WAS .18, ECN 8233,	DS 3-4-78	M.S.
			K	REV. ECN 8412	RN 11/15/78	M.S.
		C-2	L	DELETED CHAMFER AT "A" DIM. ECN 9333	JG 11-24-81	M.S.
			M	OBSOLETE -6 ECNS3621	11-3-86	R.B.
			N	OBS-5-7-8 ECNDF0376	ZP 2-89	T.W.H.
			P	REV PER OH14-0192-05	1-06	PY



- NOTE:
- "A" DIM. TOL. = +.005, -.000
 - AMP PIN 66361-2 IS FOR 14 AWG WIRE
 AMP PIN 66400-1 IS FOR 22-20 AWG WIRE
 AMP PIN 66099-2 IS FOR 18-16 AWG WIRE
 (CRIMP ON SNAP IN TYPE)
 - MAX. VOLTAGE:
 20 KVDC
 8 KVAC RMS 60 HZ
 - USE AMP CRIMP TOOL # 90067-2, 90208-1

AMP P/N	"A"	L.P. PIN	CRIMP TOOL #NO.
861753-1	.185	66400-1	90067-2
↑ -2	.302	66099-2	90067-2
-3	.185	66099-2	90067-2
-4	.302	66400-1	90067-2
OBS -5	.185	NONE	NONE
OBS -6	.302	NONE	NONE
↓ OBS -7	.185	66361-2	90208-1
861753-8	.302	66361-2	90208-1
5-861753-1	.185	1-66400-0	90067-2
5-861753-2	.302	1-66099-5	90067-2
5-861753-4	.302	1-66400-0	90067-2

UNLESS OTHERWISE SPECIFIED DIMENSIONS ARE IN INCHES. TOLERANCES: .00 ± .02 .000 ± .010 ANGLES ±				CONTRACT NO		PART NO	
MATERIAL POLYESTER				DR D. Meyer 9/17/73		AMP INCORPORATED Elizabethtown, Pa.	
FINISH BLACK				CHK H. Hermann 9/24/73		NAME RECEPTACLE LGH	
NEXT ASSY				APPD H. Hermann 9/24/73		SIZE B	
FINAL ASSY				DESIGN APPD		CODE IDENT NO 00779	
NEXT ASSY				OTHER APPD		NUMBER 861753	
USED ON				SCALE 2:1		WT	
QTY REQD				APPLICATION		SHEET 10 F1	

UPDATED A