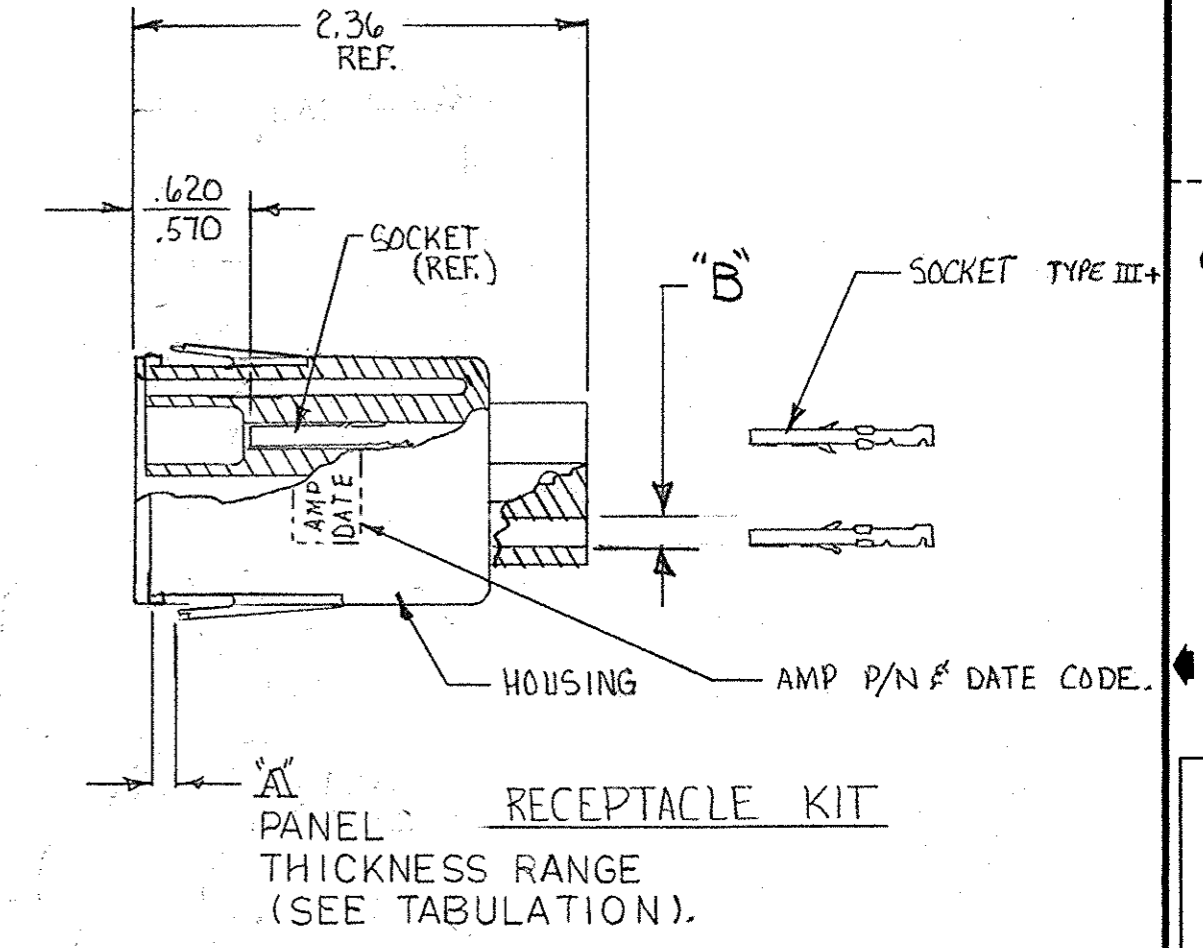
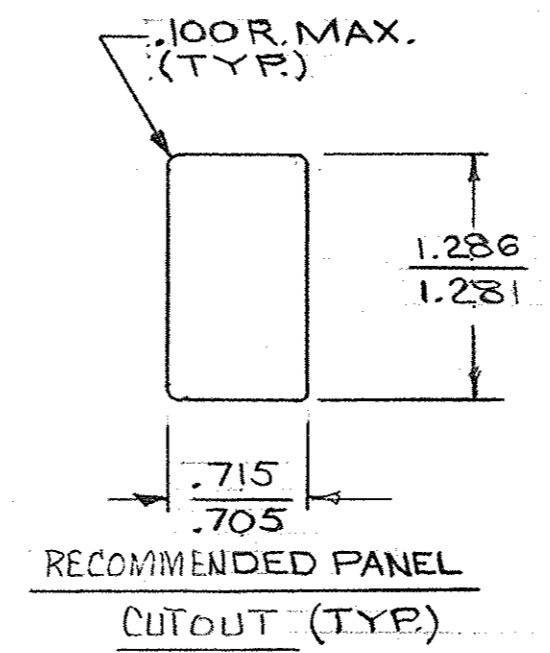
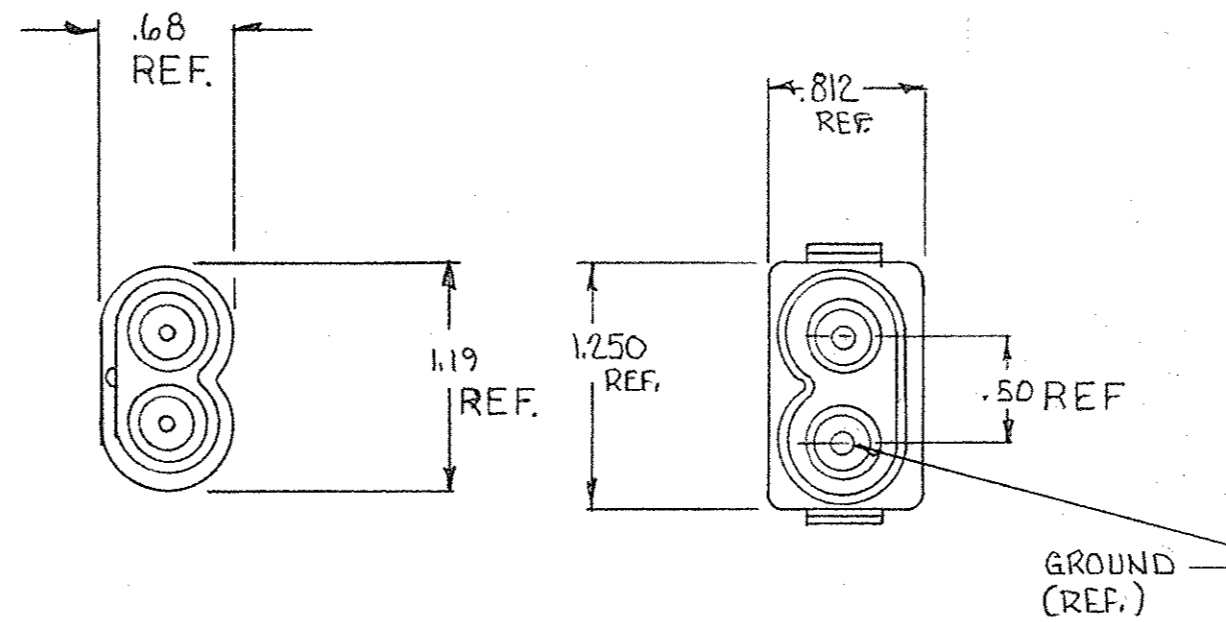
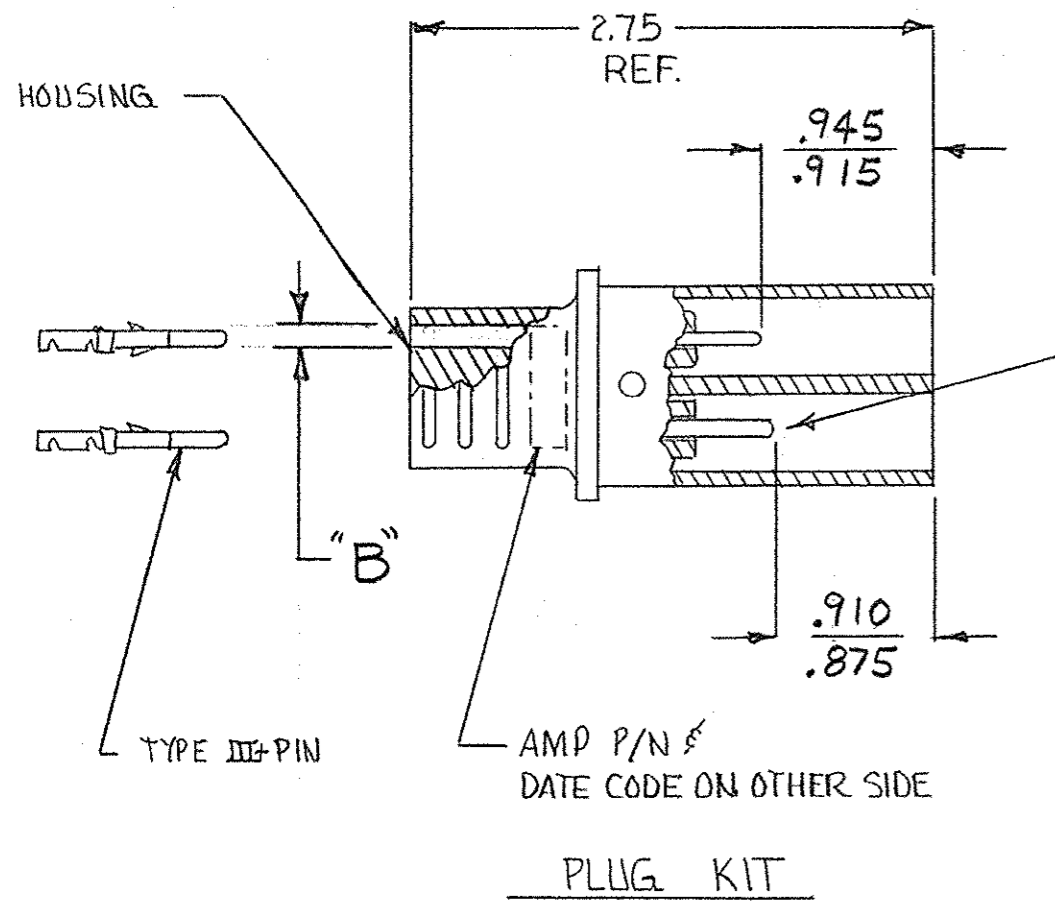


© COPYRIGHT 1979 BY AMP INCORPORATED, HARRISBURG, PA.
ALL INTERNATIONAL RIGHTS RESERVED. AMP INCORPORATED PRODUCTS
COVERED BY U. S. AND FOREIGN PATENTS AND/OR PATENTS PENDING.

PART NO.	PLUG KIT	RECEPT KIT	PANEL THKNS		WIRE SIZE RANGE (AWG)	HAND TOOL	B' DIA INSUL	CONTACT PLATING
			MIN	MAX.				
862322-1	862434-1	862435-1	.051	.065	18-16	90067-2	.125	TIN-LEAD
-2	-2	-2	.051	.065	22-20		.125	
-3	-3	-3	.051	.065	18-16		.200	
-4	-4	-4	.051	.065	22-20		.200	
OBS	-5	-5	.051	.065	18-16		.200	TIN-LEAD
OBSOLETE	-6	-3	.082	.096	18-16		.200	
-7	-4	-7	.082	.096	22-20		.200	TIN-LEAD
-8	-1	-8	.082	.096	18-16		.125	
1-862322-0	862434-3	1-862435-0	.024	.038	18-16		.200	
1-	-1	1-	.024	.038	22-20		.200	
1-	-2	1-	.024	.038	18-16		.125	TIN-LEAD
1-	-3	1-	.024	.038	22-20	90067-2	.125	
5-862322-4			.051	.065	22-20	90067-2	.200	TIN

REVISIONS											
P	F	ZONE	LTR	DESCRIPTION	DATE	APPROVED					
			E	REV. REDRAWN	RN 8/31/77	M.S.					
			F	ADDED -7 TO -13 B DIM. DELETED 1,81,.570,.065	JG 2-18-80	M.S.					
			G	CHG. PANEL CUTOUT ECN1197 Fmk	8-8-84	WDP					
			H	PER ECN L1256 & L1263	11-8-84	WDP					
			J	OBS -6,-7,1-0 THRU 1-3 ECN53621	11-3-86	R.B.					
			K	OBS-5 ECNDF0376	2/2-89	T.W.					
			L	REV PER 063D-0181-03	12-03	DE					
			M	REV PER OH14-0192-05	1-06	PY					



NOTE: GOLD PLATED CONTACTS.

				UNLESS OTHERWISE SPECIFIED DIMENSIONS ARE IN INCHES.	CONTRACT NO							
				TOLERANCES: .00 ± .02 .000 ± .005 ANGLES ±	DR <i>8/29/79</i>					NAME		
				MATERIAL	CHK <i>[Signature]</i>					2 CAVITY PLUG & RECEPTACLE KIT		
				FINISH	APPD <i>[Signature]</i>					LGH		
NEXT ASSY	FINAL ASSY	NEXT ASSY	USED ON		APPD					SIZE	CODE IDENT NO	DRAWING NO
QTY REQD		APPLICATION			DSGN APPD					C	00779	862322
					OTHER APPD					SCALE SHEET 1 OF 1		