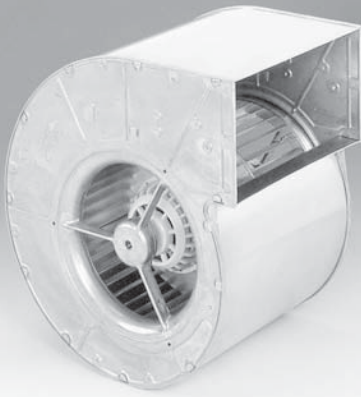


RD25S Series

Centrifugal Blower

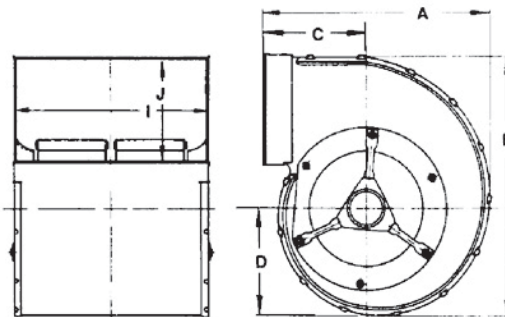
Ø 250mm



- AC dual inlet, forward curved centrifugal blower in compact housing. The integrated external-rotor motor is mounted inside the housing.
- Housing and impeller made of galvanized sheet-steel. Forward curved impellers are directly press-fitted onto the rotor of the external-rotor motor.

- Direction of rotation is CCW as seen from inlet side. Insulation class "F".
- Maintenance-free ball bearings.
- UL, CSA, VDE approvals on some models, please contact application engineering.

Part Number	Curve	CFM @ 0	VAC	Hertz	Power (W)	dBA	Max Amb. Temp. C	Bearing Type	Features	Capacitor (µF)	Wgt. (lbs)
RD25S-4/209061	1	2000	115	50/60	1150	n/a	40	Ball	Leads	60	40.0
RD25S-4/209718	3	2800	230	50/60	1800	n/a	40	Ball	Leads	20	44.0
RD25S-4/210311	1	2000	230	50/60	1100	n/a	40	Ball	Leads	14	40.0
RD25S-4/206198	3	2800	115	60	1800	n/a	40	Ball	Leads	90	44.0



PART NUMBER	DIMENSIONS - Inches (mm)					
	A	B	C	D	I	J
RD25S-4/209061	15.90 (404)	17.64 (448)	7.05 (179)	7.52 (191)	11.50 (292)	6.61 (168)
RD25S-4/206198	15.90 (404)	17.64 (448)	7.05 (179)	7.52 (191)	14.88 (378)	6.61 (168)
RD25S-4/209718						

