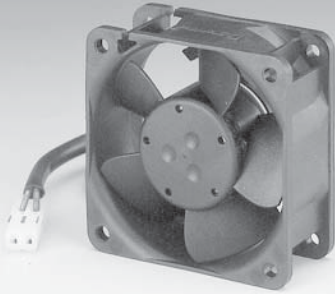


600N Series

Tubeaxial

60x60x25mm



- DC fans with electronically commutated external rotor motor. Fully integrated commutation electronics.
- With electronic protection against reverse polarity, blocking and overloading.
- Mounting from either face using four 4.3 mm holes.

- Fan of fiberglass reinforced plastic. PBTP housing, PA impeller.
- Air exhaust over struts. Rotational direction CCW looking at rotor.
- Electrical connection via 2 leads AWG 22, TR 64. Stripped and tinned ends.
- UL, CSA, VDE approvals on some models, please contact application engineering.

Part Number	Curve	CFM @ 0	VDC	Volt. Range	Power (W)	dBA	Max Amb. Temp C	Bearing Type	Features	Wgt. (lbs)
612NL	1	12	12	8 to 15	0.6	16	70	Ball	Leads	0.19
612NML	2	14	12	8 to 15	0.8	19	70	Ball	Leads	0.19
612NM	3	20	12	8 to 15	1.1	28	70	Ball	Leads	0.19
612NN	4	24	12	8 to 15	1.6	35	70	Ball	Leads	0.19
612NH	5	27	12	8 to 15	2.0	38	70	Ball	Leads	0.19
612NHH	5	27	12	8 to 15	3.0	41	70	Ball	Leads	0.19
<hr/>										
614NL	1	12	24	18 to 28	0.9	16	70	Ball	Leads	0.19
614NML	2	14	24	18 to 28	1.0	19	70	Ball	Leads	0.19
614NM	3	21	24	18 to 28	1.4	28	70	Ball	Leads	0.19
614NN	4	24	24	18 to 28	1.8	35	70	Ball	Leads	0.19
614NH	5	27	24	18 to 26	2.1	38	70	Ball	Leads	0.19
614NHH	6	33	24	18 to 26	3.0	43	70	Ball	Leads	0.19
<hr/>										
618NN	4	24	48	36 to 56	2.1	35	65	Ball	Leads	0.19

