

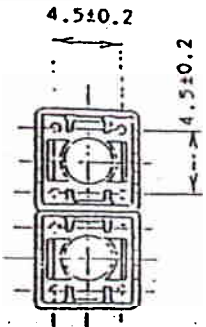
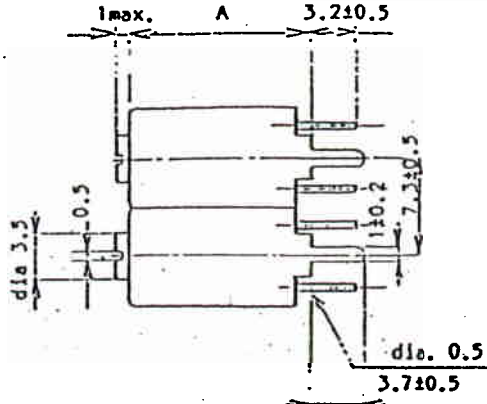
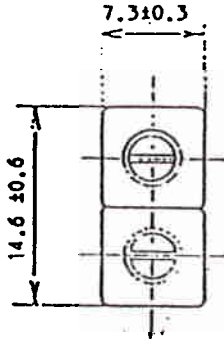
Customer & part number:
Toko sample number :

252MXPR-2535A

TK3301

Dimensions.

	A(max)
252HA == 14=6=	
252MXPR 13.3	
252IN == 13=3=	
252IN == 11=4=	



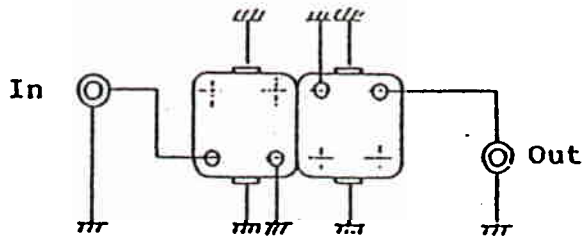
(Unit in mm)

Electrical characteristics.

- Center frequency (Fo) : 405MHz
- ~~Tuning range~~ : ~~Fo ±~~
- 1 db bandwidth at Fo : 8.0MHz min.
- Insertion loss at Fo : 3.5dB max.
- Selectivity Fo + 30 Mhz : 13dB min.
- Fo - 30 Mhz : 15dB min.
- Ripple in pass band : 1.5dB max.
- Input impedance : 50-ohms
- Output impedance : 50-ohms

Connection.

(Bottom view)



Remarks.

1. Please return one copy with your signature when samples are approved under the above specification.

* Modified from 252MX-1547A.

Date	Approved by	Made by	
Feb 19, 88	 M. Tatebe	 U. Saitoh	Toko Inc 1-17, 2-Chome, Higashi-Yukigaya, Ohta-ku Tokyo. Fax. 03-728-4697

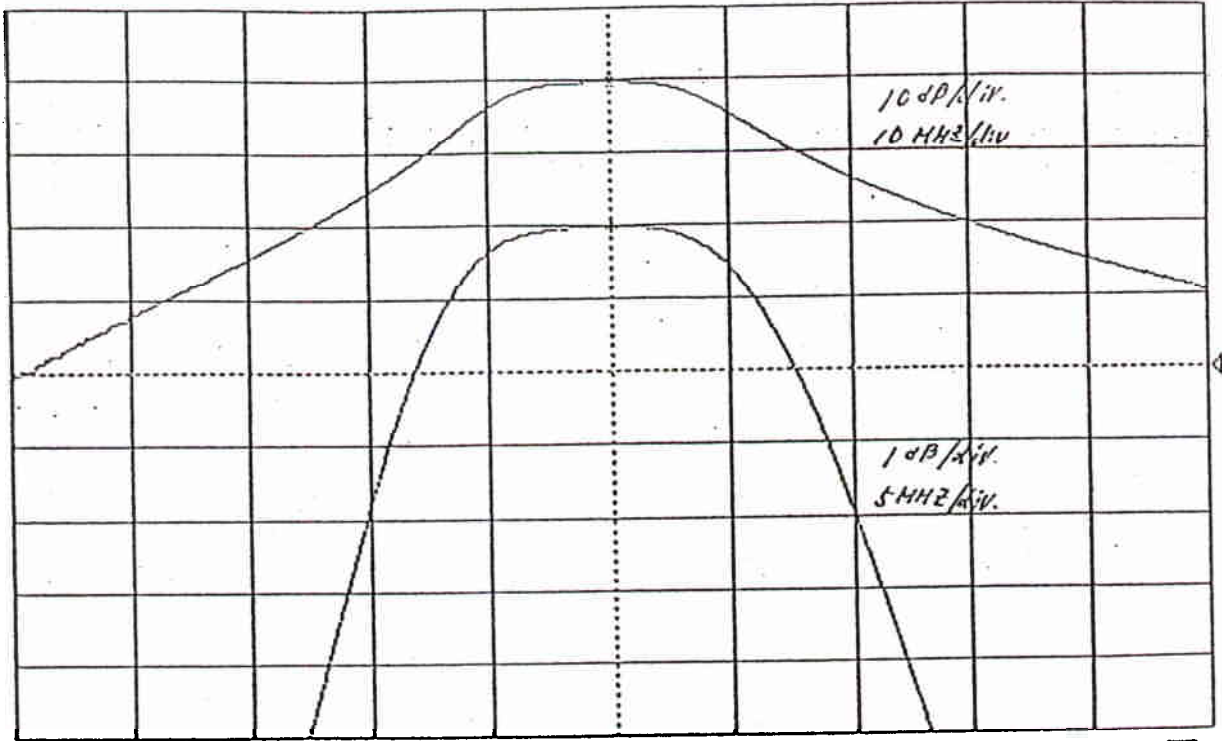
Z52MXPR-2535A

88.02.16 11:31

M0

MKR(250):405MHz
A(*):MAGTD -20.43dB
B(*):B -20.42dB

1dB/ ~~22.84dB~~
10dB/ -60.11dB



CF: 405MHz

~~SPAN~~ 50MHz

OUT(B): 0.00dBm ST: 3.90sec

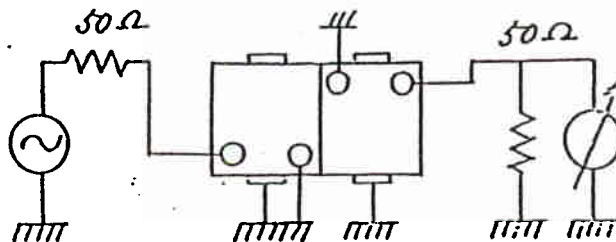
EL: 0.00cm

IRG(R): 0dBm IRG(T): 0dBm

RBW: 10kHz UBW: 10kHz 50Ω

MAGTD

OFFSET CTR



(Bottom View)