

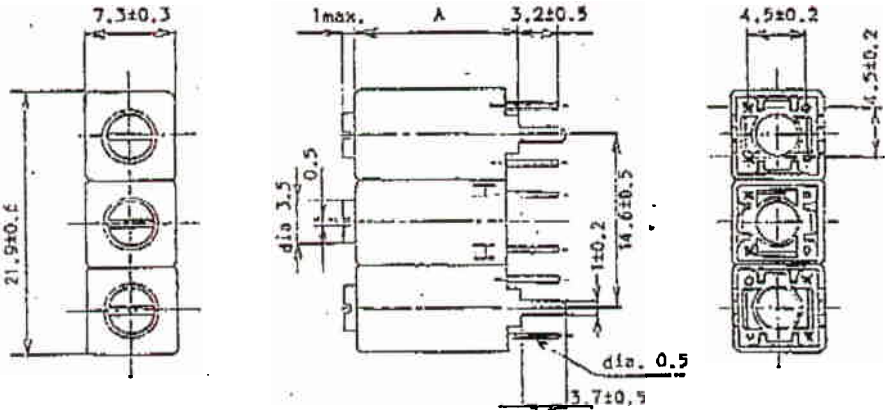
Customer & part number :
Toko sample number :

302MXP-1225G

Dimensions.

	A(max)
302MN	14.5
302MXP	13.3
302IN	13.5
362LN	14.5

(Unit in mm)

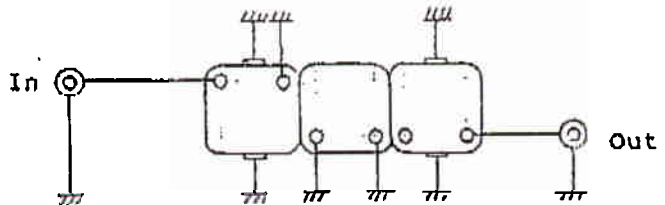


Electrical characteristics.

Center frequency (Fo)	:	510MHz
Running range	:	40-60MHz
- 1 db bandwidth at Fo	:	33MHz min.
Insertion loss at Fo	:	1.5dB max.
Selectivity		
Fo + 50 Mhz	:	9.0dB min.
Fo - 50 Mhz	:	10dB min.
Ripple in pass band	:	1.0dB max.
Input impedance	:	50-ohm
Output impedance	:	50-ohm

Connections.

(Bottom view)



Remarks.

- Please return one copy with your signature when samples are approved under the above specification.

* Modified from 302MN-069G.

Orig	08-MAR-95	↑
	Issues	Sig

Date	Approved by	Made by
Jun 21, 89	<i>H. Ohtuka</i> H. Ohtuka	<i>H. Saitoh</i> H. Saitoh

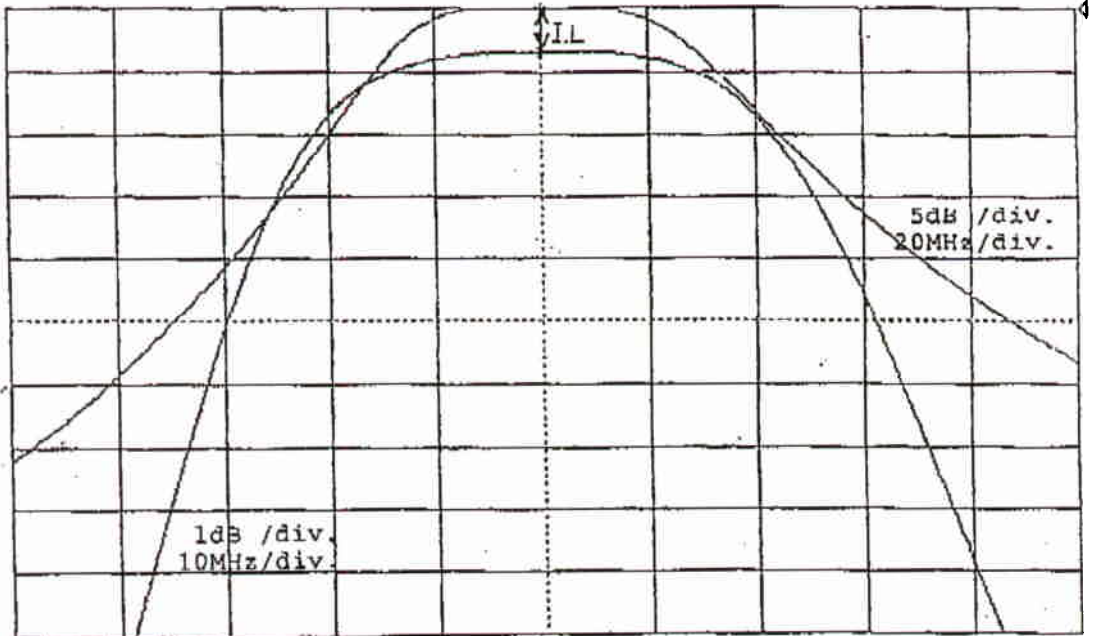
Toko Inc
1-17, 2-Chome, Higashi-
Yukigaya, Ohta-Ku Tokyo
Fax. 03-728-4697

302MXPR-1225G

89.06.20 13:55

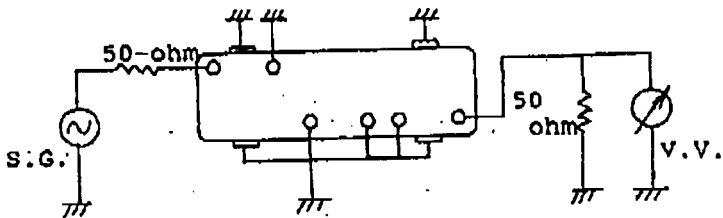
MKR(250):510MHz
A(*):MAGTD -0.72dB
B(*):B -0.70dB

5dB/ [redacted] -0.71dB
1dB/ 0.00dB



CF:510MHz SPAN:200MHz
OUT(B):0.00dBm ST:3.90sec EL:0.00cm
IRG(R):0dBm IRG(T):0dBm RBW:10kHz VBW:10kHz 50Ω
MAGTD [redacted] [redacted] [redacted] OFFSET TOP

TEST CIRCUIT



(Bottom View)