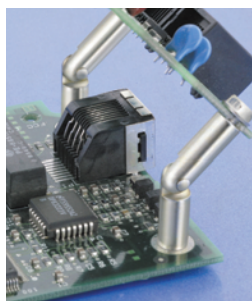


## HINGED STANDOFFS

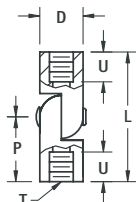


- Applications unlimited
- Time saving
- Space saving
- Interconnect circuits or services without danger of shorting

### MATERIAL:

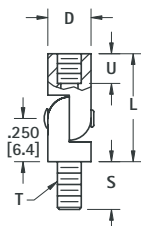
Brass, ASTM-B16. Zinc Plate and Yellow Dye

### FEMALE/FEMALE HINGE



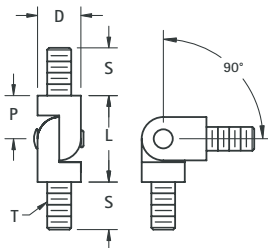
| CAT. NO. | L LENGTH     | U          | P           | D DIAMETER | T THREAD |
|----------|--------------|------------|-------------|------------|----------|
| 351      | .750 (19.1)  | .172 (4.4) | .375 (9.5)  | .187 (4.7) | 4-40     |
| 352      | 1.000 (25.4) | .250 (6.4) | .625 (15.9) |            |          |
| 330      | 1.250 (31.8) | .250 (6.4) | .625 (15.9) |            |          |
| 353      | .750 (19.1)  | .172 (4.4) | .375 (9.5)  | .250 (6.4) | 6-32     |
| 354      | 1.000 (25.4) | .250 (6.4) | .625 (15.9) |            |          |
| 331      | 1.250 (31.8) | .250 (6.4) | .625 (15.9) |            |          |
| 355      | .750 (19.1)  | .172 (4.4) | .375 (9.5)  | .250 (6.4) | 8-32     |
| 356      | 1.000 (25.4) | .250 (6.4) | .625 (15.9) |            |          |
| 332      | 1.250 (31.8) | .250 (6.4) | .625 (15.9) |            |          |

### MALE/FEMALE HINGE



| CAT. NO. | L LENGTH    | S          | U          | D DIAMETER | T THREAD |
|----------|-------------|------------|------------|------------|----------|
| 333      | .625 (15.9) | .250 (6.4) | .172 (4.4) | .187 (4.7) | 4-40     |
| 334      | .875 (22.2) | .250 (6.4) | .250 (6.4) |            |          |
| 335      | .625 (15.9) | .312 (7.9) | .172 (4.4) | .250 (6.4) | 6-32     |
| 336      | .875 (22.2) | .312 (7.9) | .250 (6.4) |            |          |
| 337      | .625 (15.9) | .312 (7.9) | .172 (4.4) | .250 (6.4) | 8-32     |
| 338      | .875 (22.2) | .312 (7.9) | .250 (6.4) |            |          |

### MALE/MALE HINGE



| CAT. NO. | L LENGTH    | S          | P          | D DIAMETER | T THREAD |
|----------|-------------|------------|------------|------------|----------|
| 357      | .500 (12.2) | .250 (6.4) | .250 (6.4) | .187 (4.7) | 4-40     |
| 358      | .500 (12.2) | .312 (7.9) | .250 (6.4) | .250 (6.4) | 6-32     |
| 359      | .500 (12.2) | .312 (7.9) | .250 (6.4) | .250 (6.4) | 8-32     |

## SPACERS/STANDOFF ORGANIZER KITS



Maintain a neat complete inventory of the most frequently used spacers and standoffs in day-to-day operations. Choice of 14 different kits of the most popular spacers and standoffs. An assortment of various sizes and styles in Brass, Aluminum and Nylon with tapped or thru hole. Supplied with clear draw cabinet labeled for easy identification.

Kits combine the most frequently used spacers or standoffs for stacking and multi-stacking prototyping.

### 400 PIECE THREADED STANDOFFS KITS

Assortment of 400 total standoffs: Female-Female standoffs and Male-Female standoffs both Aluminum and Nylon, with lengths of .250, .500, .750 and 1.000.

25 pieces of each size. Complete with cabinet and 25 machine screws with matching thread.



| CAT. NO. | KIT SUPPLIED WITH       |
|----------|-------------------------|
| STR-440  | 4-40 Threaded Standoffs |
| STR-632  | 6-32 Threaded Standoffs |
| STR-832  | 8-32 Threaded Standoffs |

### 400 PIECE CLEAR HOLE SPACER KITS

Assortment of 400 total spacers: Brass, Aluminum, Nylon, Rolled Aluminum, with lengths of .250, .500, .750 and 1.000.

25 pieces of each size. Complete with cabinet.



| CAT. NO. | KIT SUPPLIED WITH     |
|----------|-----------------------|
| SCR-4    | #4 Clear Hole Spacers |
| SCR-6    | #6 Clear Hole Spacers |
| SCR-8    | #8 Clear Hole Spacers |

### 1500 PIECE THREADED STANDOFF KITS

Assortment of 1500 pieces in .250, .375, .500, .750 and 1.000 lengths, with thread sizes of 4-40, 6-32 and 8-32.

100 pieces of each size. Complete with cabinet.

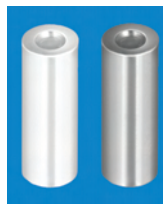


| CAT. NO. | KIT SUPPLIED WITH                            |
|----------|--|
| STR-15   | Round Brass Zinc Plated Standoffs            |
| STR-35   | Round Aluminum Standoffs with Iridite Finish |
| STH-14   | Hex Brass Zinc Plated Standoffs              |
| STH-22   | Hex Aluminum Standoff with Iridite Finish    |

### 1500 PIECE THRU HOLE SPACER KITS

Assortment of 1500 pieces in .250, .375, .500, .750 and 1.000 lengths, with clearance holes for #4, #6 and #8.

100 pieces of each size. Complete with cabinet.



| CAT. NO. | KIT SUPPLIED WITH                    |
|----------|--------------------------------------|
| SPR-13   | Brass Nickel Plated Spacers          |
| SPR-34   | Aluminum Spacers with Iridite Finish |
| SPR-8    | Nylon 6/6 Spacers                    |

### 750 PIECE MALE/FEMALE THREADED STANDOFF KIT

Assortment of 750 pieces in .500, .750, 1.000, 1.25 and 1.5 lengths, with thread sizes of 4-40, 6-32 and 8-32.

50 pieces of each size. Complete with cabinet.



CAT. NO. STH-19 (Hex Brass Zinc Plated)