

# DC to AC Inverters

## Connector type, Dimming, 5W, for 2 Bulbs

Conformity to RoHS Directive

### CXA Series CXA-0271

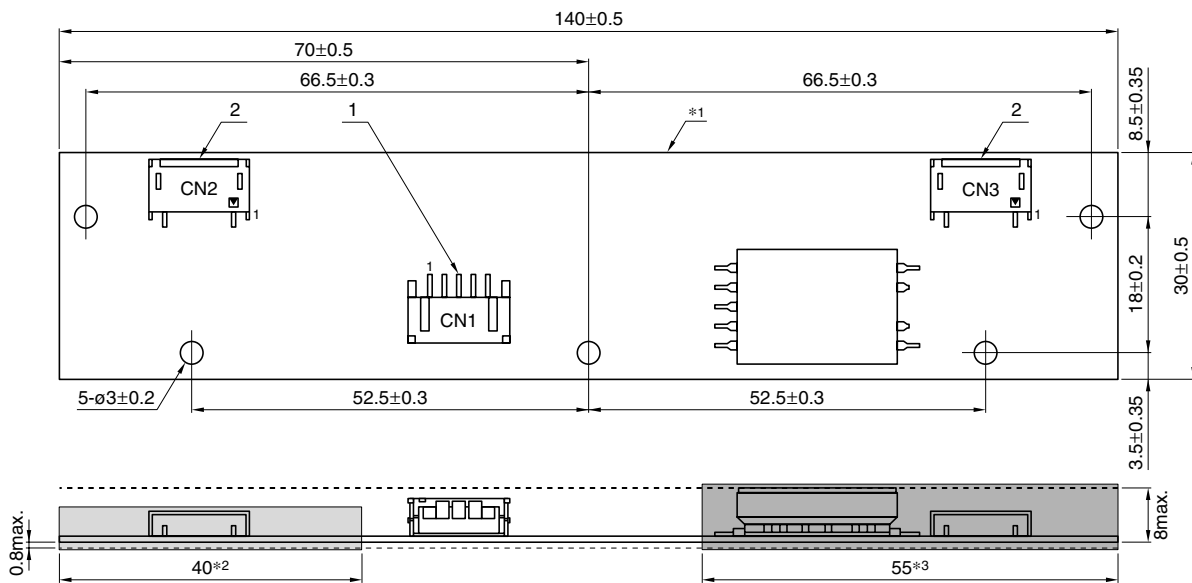
#### FEATURES

- For 2 bulbs.
- Applicable panel size\* : 8 to 12-inch
- With brightness control function (Pulse Wide Modulation mode).
- With lamp failure detector.
- The high-voltage terminals and patterns are coated with silicone so as to avoid the defects caused by dust.
- It is a product conforming to RoHS directive.
- \* The applicable panel size is for typical reference dimensions.

#### TEMPERATURE AND HUMIDITY RANGES

Temperature range (°C)	Operating	0 to +60
	Storage	-30 to +85
Humidity range(%)RH		95max.
		[Maximum wet-bulb temperature 38°C. No dew.]

#### SHAPES AND DIMENSIONS



\*1 Substrate(PWB): Printed wiring board: Flame retardant material UL94V-0(CEM-3) t=1mm

\*2 : High-voltage generator (The entire surface within a range of 40mm away from the end of the base in the output)

\*3 : High-voltage generator (The entire surface within a range of 55mm away from the end of the base in the output)

Weight: 21.0g typ.

Dimensions in mm

	Connector manufacturer's company and type	Symbol
1 Input connector	Japan Solderless Terminal Co., Ltd. S5B-PH-SM4	CN1
2 Output connector	Japan Solderless Terminal Co., Ltd. SM02(8.0)B-BHS-1	CN2, CN3

#### TERMINAL NUMBERS AND FUNCTIONS

##### CN1

Terminal No.	Function	Symbol
CN1-1	Input voltage Edc: 10.8 to 13.2V/12V[nom.]	V <sub>in</sub>
CN1-2	0V	GND
CN1-3	Brightness dimmer voltage* Edc: 0 to 2.5V(Maximum brightness on 0V)	V <sub>br</sub>
CN1-4	Lamp failure detector 0V: Normal condition/5V: Abnormal condition	V <sub>st</sub>
CN1-5	Remote voltage Edc 0 to 0.4V: off/2.5 to 13.2V:on	V <sub>rmt</sub>

\* Brightness can be controlled by adjusting V<sub>br</sub> within a range of 0 to 2.5V.

##### CN2

Terminal No.	Function	Symbol
CN2-1	Output 1[High voltage] I <sub>rms</sub> 2 to 6mA	V <sub>HIGH1</sub>
CN2-2	—	N.C.
CN2-3	Output 1[Low voltage] (5V)	V <sub>Low1</sub>

##### CN3

Terminal No.	Function	Symbol
CN3-1	Output 2[High voltage] I <sub>rms</sub> 2 to 6mA	V <sub>HIGH2</sub>
CN3-2	—	N.C.
CN3-3	Output 2[Low voltage] (5V)	V <sub>Low2</sub>

• Conformity to RoHS Directive: This means that, in conformity with EU Directive 2002/95/EC, lead, cadmium, mercury, hexavalent chromium, and specific bromine-based flame retardants, PBB and PBDE, have not been used, except for exempted applications.

• All specifications are subject to change without notice.

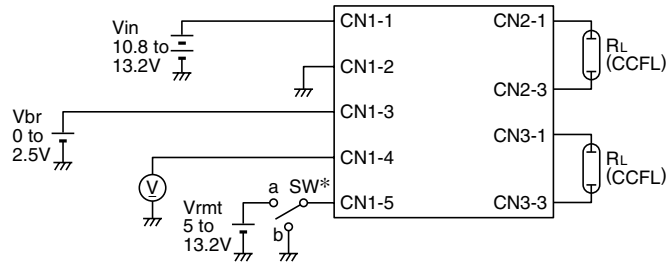
# CXA-0271

## ELECTRICAL CHARACTERISTICS

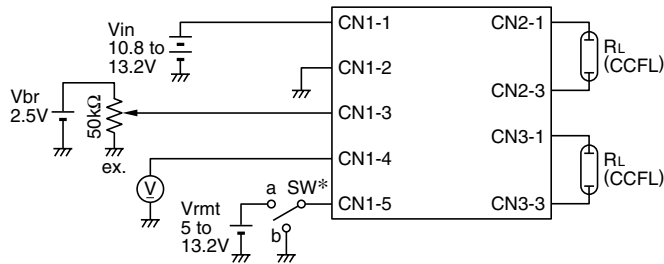
Item	Unit	Symbol	Specification			Condition		Ta(°C)	RL(kΩ)	Brightness
			min.	typ.	max.	Vin(V)	Vbr(V)			
Output current I <sub>rms</sub>	mA	I <sub>out</sub>	5.7	6	6.7	12±0.1	0	23±5	74±0.5	Maximum
			5	6	7	12±1.2	0	0 to +60	74±0.5	Maximum
Input current I <sub>dc</sub>	A	I <sub>in</sub>	—	0.55	0.7	12±0.1	2.5	23±5	74±0.5	Minimum
Oscillation frequency	kHz	FL	38	43	48	12±1.2	0	23±5	74±0.5	
Open circuit output voltage E <sub>rms</sub>	kV	V <sub>open</sub>	1.25	1.5	—	12±1.2	0	23±5	∞	

## TYPICAL CONNECTIONS

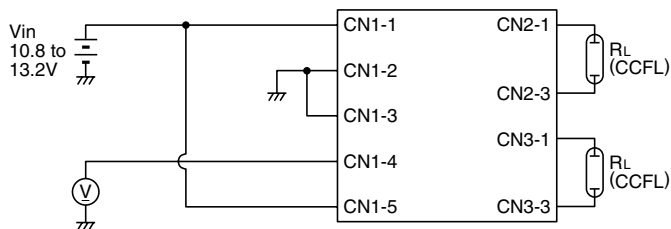
### EXAMPLE OF VOLTAGE DIMMER CONTROL



### EXAMPLE OF POTENTIOMETER DIMMER CONTROL



### NO DIMMER CONTROL (BRIGHTNESS MAX.)



\* SW a:on, b:off

## BRIGHTNESS DIMMER VOLTAGE- OUTPUT CURRENT CHARACTERISTICS

