

DC to AC Inverters

Conformity to RoHS Directive

Connector type, Dimming, 5W, for 1 Bulb

CXA Series CXA-L0612A-VJL

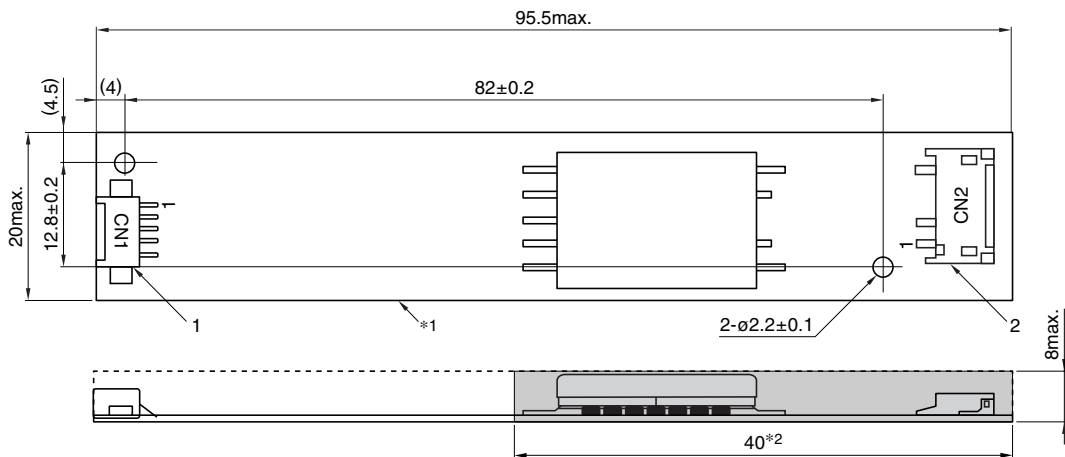
FEATURES

- Use of output current control avoids effects resulting from input voltage, load, and distributed capacitance variation.
- This inverter unit is appropriate for use with 6 to 13 inch LCDs since the typical open circuit voltage(initial lamp ignition voltage) is 1.8kVrms(typ.).
- Safe design that includes a built-in overcurrent protection element.
- Insulation is simplified due to flat backside surface of board.
- Excellent inverter for ignition of U-shaped cold cathode fluorescent lamps.
- The high-voltage terminals and patterns are coated with silicone so as to avoid the defects caused by dust.
- It is a product conforming to RoHS directive.

TEMPERATURE AND HUMIDITY RANGES

| | | |
|------------------------|-----------|-------------------------------------|
| Temperature range (°C) | Operating | 0 to +70 |
| | Storage | −30 to +85 |
| Humidity range(%)RH | | 95max. |
| | | [Maximum wet-bulb temperature 38°C] |

SHAPES AND DIMENSIONS



*1 Substrate(PWB: Printed wiring board): Flame retardant material UL94V-0(FR-4 or CEM-3) t=1mm

*2 : High-voltage generator (The entire surface within a range of 40mm away from the end of the base in the output)

Weight: 14.5g typ.

Dimensions in mm

| | Connector manufacturer's company and type | | | Symbol |
|---|---|-------------------------------------|------------------|--------|
| 1 | Input connector | Molex Japan Co., Ltd. | 53261-0571 | CN1 |
| 2 | Output connector | Japan Solderless Terminal Co., Ltd. | SM02(8.0)B-BHS-1 | CN2 |

TERMINAL NUMBERS AND FUNCTIONS

CN1

| Terminal No. | Functions | Symbol |
|--------------|--|--------|
| CN1-1 | Input voltage Edc: 9.6 to 15V 12V[nom.] | Vin |
| CN1-2 | 0V | GND |
| CN1-3 | Remote voltage Edc 0V: off/5 to 5.25V:on | Vrmt |
| CN1-4 | Brightness dimmer voltage* Edc: 0 to 4V(Maximum brightness on 0V) | Vbr |
| CN1-5 | Used in the internal circuits, do not connect. | N.C. |

* Brightness can be controlled by adjusting Vbr within a range of 0 to 4V.

CN2

| Terminal No. | Functions | Symbol |
|--------------|--|--------|
| CN2-1 | Output 1[High voltage] Irms 1.6 to 6mA | VHIGH |
| CN2-2 | — | N.C. |
| CN2-3 | Output[Low voltage] (2V) | VLOW |

• Conformity to RoHS Directive: This means that, in conformity with EU Directive 2002/95/EC, lead, cadmium, mercury, hexavalent chromium, and specific bromine-based flame retardants, PBB and PBDE, have not been used, except for exempted applications.

• All specifications are subject to change without notice.

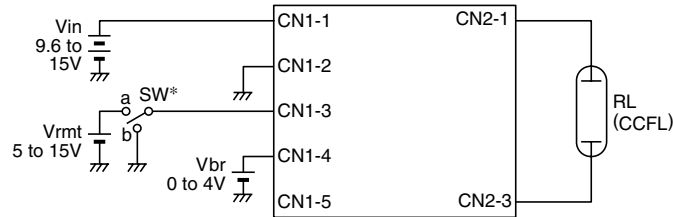
CXA-L0612A-VJL

ELECTRICAL CHARACTERISTICS

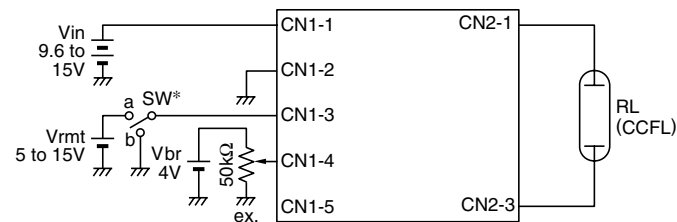
| Items | Unit | Symbol | Specifications | | | Conditions | | Ta(°C) | RL(kΩ) | Brightness |
|--|------|-------------------|----------------|------|------|------------|--------|----------|-----------|------------|
| | | | min. | typ. | max. | Vin(V) | Vbr(V) | | | |
| Output current I _{rms} | mA | I _{out} | 5.3 | 6 | 6.7 | 9.6 to 15 | 0 | 0 to +70 | 90 to 130 | Maximum |
| | | | 5.4 | 6 | 6.6 | 9.6 to 15 | 0 | 23±5 | 100 | Maximum |
| | | | 1.3 | 1.6 | 1.9 | 9.6 to 15 | 4 | 23±5 | 520 | Minimum |
| Input current I _{dc} | A | I _{in} | — | 0.4 | 0.65 | 12 | 0 | 0 to +70 | 90 to 130 | |
| Oscillation frequency | kHz | FL | 48 | 58 | 68 | 9.6 to 15 | 0 | 0 to +70 | 90 to 130 | |
| Open circuit output voltage E _{rms} | V | V _{open} | 1500 | 1800 | — | 9.6 to 15 | 0 to 3 | 0 to +70 | ∞ | |

TYPICAL CONNECTIONS

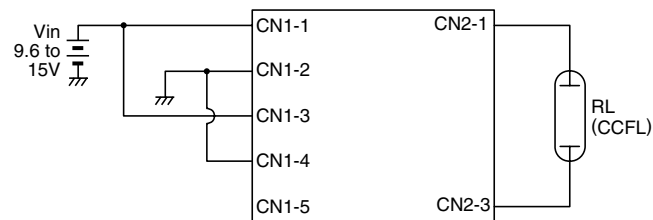
EXAMPLE OF VOLTAGE DIMMER CONTROL



EXAMPLE OF POTENTIOMETER DIMMER CONTROL



NO DIMMER CONTROL(BRIGHTNESS MAX.)



* SW a:on, b:off

BRIGHTNESS DIMMER VOLTAGE-OUTPUT CURRENT CHARACTERISTICS

