

DC to AC Inverters

Connector type, Dimming, 9W, for 2 Bulbs

Conformity to RoHS Directive

CXA Series CXA-P1612-VJL

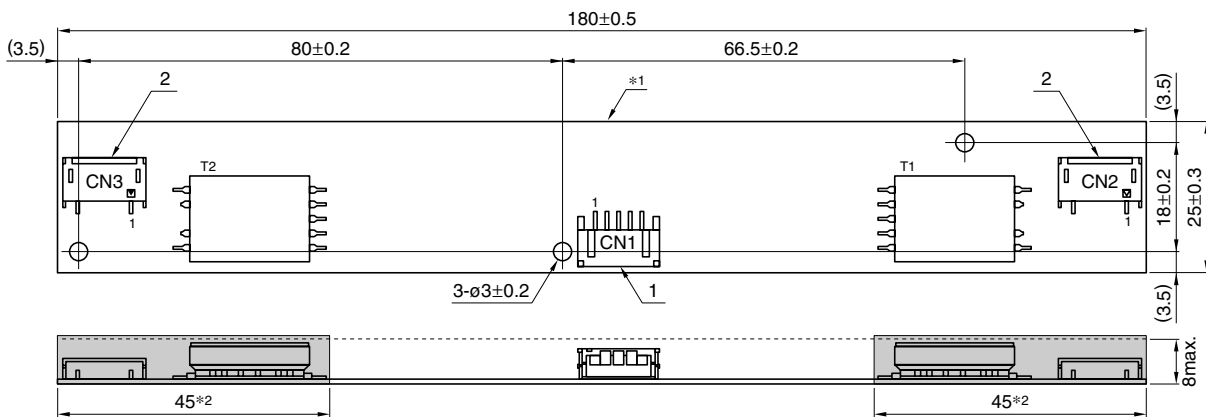
FEATURES

- For 2 bulbs.
- Applicable panel size* : 10 to 15-inch
- With brightness control function (Pulse Wide Modulation mode).
- The high-voltage terminals are coated with silicone so as to avoid the defects caused by dust.
- It is a product conforming to RoHS directive.
- * The applicable panel size is for typical reference dimensions.

TEMPERATURE AND HUMIDITY RANGES

| | | |
|------------------------|-----------|--|
| Temperature range (°C) | Operating | 0 to +60 |
| | Storage | -30 to +85 |
| Humidity range(%)RH | | 95max. [Maximum wet-bulb temperature 38°C. No dew.] |

SHAPES AND DIMENSIONS



*1 Substrate(PWB: Printed wiring board): Flame retardant material UL94V-0(FR-4 or CEM-3) t=1mm

Weight: 29.6g typ.

*2 : High-voltage generator (The entire surface within a range of 45mm away from the end of the base in the output)

Dimensions in mm

| | Connector manufacturer's company and type | | Symbol |
|---|---|--|--------|
| 1 | Input connector | Japan Solderless Terminal Co., Ltd. S5B-PH-SM4 | CN1 |
| 2 | Output connector | Japan Solderless Terminal Co., Ltd. SM02(8.0)B-BHS-1 | CN2 |

TERMINAL NUMBERS AND FUNCTIONS

CN1

| Terminal No. | Function | Symbol |
|--------------|--|------------------|
| CN1-1 | Input voltage Edc: 10.8 to 13.2V/12V | V _{in} |
| CN1-2 | 0V | GND |
| CN1-3 | Brightness dimmer voltage* Edc: 0 to 2.5V(Maximum brightness on 0V) | V _{br} |
| CN1-4 | Used in the internal circuits, do not connect. | N.C. |
| CN1-5 | Remote voltage Edc 0V : off/5 to 15V:on | V _{rmt} |

* Brightness can be controlled by adjusting V_{br} within a range of 0 to 2.5V.

CN2

| Terminal No. | Function | Symbol |
|--------------|--|--------------------|
| CN2-1 | Output 1[High voltage] I _{rms} 4 to 8mA | V _{HIGH1} |
| CN2-2 | — | N.C. |
| CN2-3 | Output 1[Low voltage] (0.6V) | V _{LOW1} |

CN3

| Terminal No. | Function | Symbol |
|--------------|--|--------------------|
| CN3-1 | Output 2[High voltage] I _{rms} 4 to 8mA | V _{HIGH2} |
| CN3-2 | — | N.C. |
| CN3-3 | Output 2[Low voltage] (0.6V) | V _{LOW2} |

• Conformity to RoHS Directive: This means that, in conformity with EU Directive 2002/95/EC, lead, cadmium, mercury, hexavalent chromium, and specific bromine-based flame retardants, PBB and PBDE, have not been used, except for exempted applications.

• All specifications are subject to change without notice.

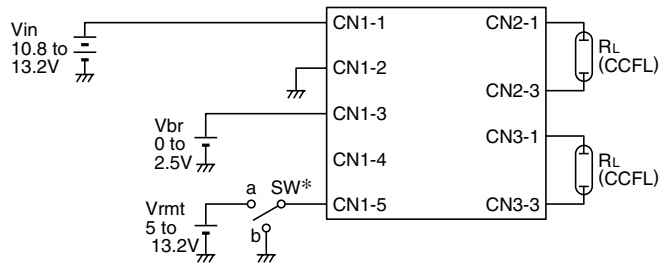
CXA-P1612-VJL

ELECTRICAL CHARACTERISTICS

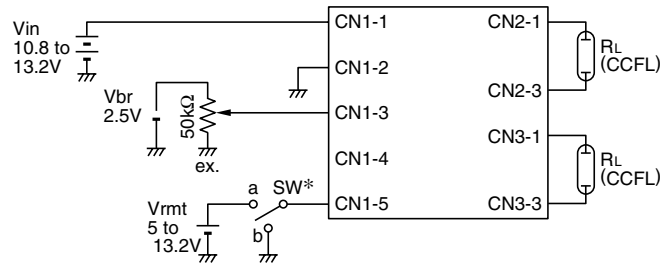
| Item | Unit | Symbol | Specification | | | Condition | | | | Brightness |
|--|------|-------------------|---------------|------|------|-----------|--------|----------|--------|------------|
| | | | min. | typ. | max. | Vin(V) | Vbr(V) | Ta(°C) | RL(kΩ) | |
| Output current I _{rms} | mA | I _{out} | 7.2 | 8.0 | 8.8 | 10.8±0.05 | 0 | 0 to +60 | 70±2 | Maximum |
| | | | 7.2 | 8.0 | 8.8 | 12.0±0.05 | 0 | 0 to +60 | 70±2 | Maximum |
| | | | 7.2 | 8.0 | 8.8 | 13.2±0.05 | 0 | 0 to +60 | 70±2 | Maximum |
| | | | 3.5 | 4.0 | 4.5 | 12.0±0.05 | 2±0.05 | 0 to +60 | 70±2 | Minimum |
| Input current I _{dc} | A | I _{in} | — | 1.0 | 1.5 | 12.0±0.05 | 0 | 0 to +60 | 70±2 | |
| Oscillation frequency | kHz | F _L | 50 | 55 | 60 | 12.0±0.05 | 0 | 0 to +60 | 70±2 | |
| Open circuit output voltage E _{rms} | kV | V _{open} | 1.5 | 1.6 | — | 10.8±0.05 | 0 | 0 to +60 | ∞ | |

TYPICAL CONNECTIONS

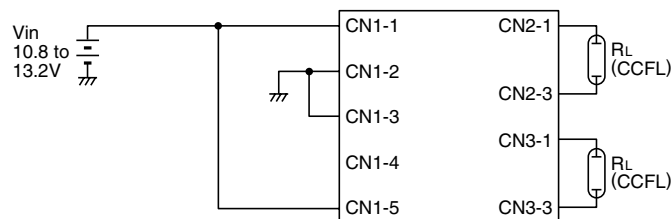
EXAMPLE OF VOLTAGE DIMMER CONTROL



EXAMPLE OF POTENTIOMETER DIMMER CONTROL



NO DIMMER CONTROL (BRIGHTNESS MAX.)



* SW a:on, b:off

BRIGHTNESS DIMMER VOLTAGE- OUTPUT CURRENT CHARACTERISTICS

