

# 43 SERIES

# NEC

NEL-D32-43 (standard)  
D32-43 TRANS (transformer)

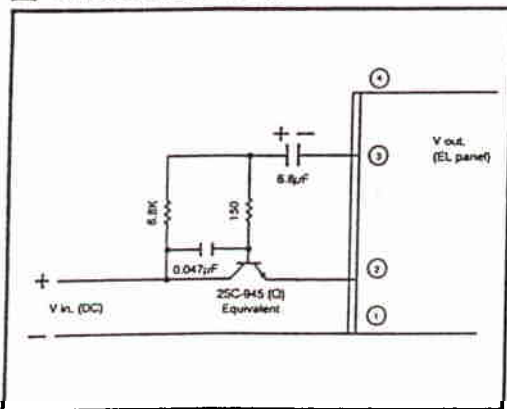
## MAXIMUM RATING

Input voltage	6vDC
Load (lamp surface area)	48 cm <sup>2</sup>
Storage temperature	-20-70°C
Operating ambient temperature	-10-55°C

## ACCEPTABLE OPERATING RANGE

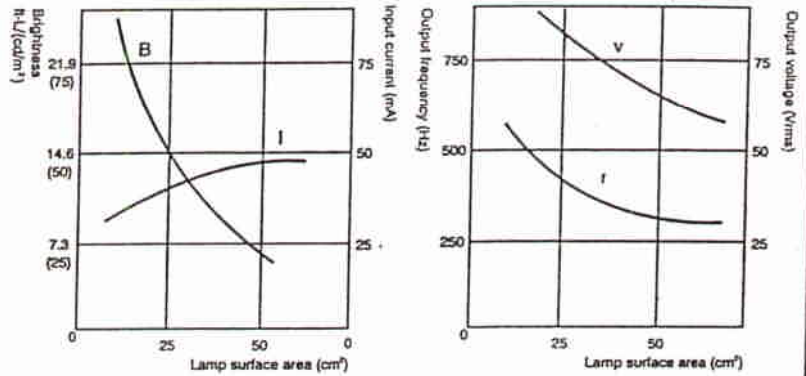
Input voltage	3-5.5v DC
Load (lamp surface area)	25-43cm <sup>2</sup>

## CIRCUIT DIAGRAM



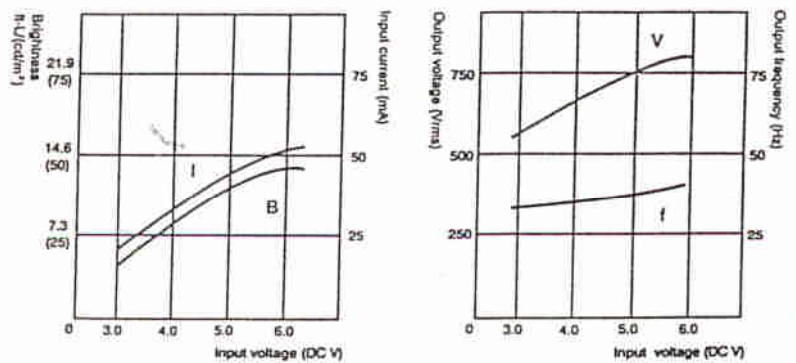
## LOAD CHARACTERISTICS

(V<sub>in</sub>=5VDC)

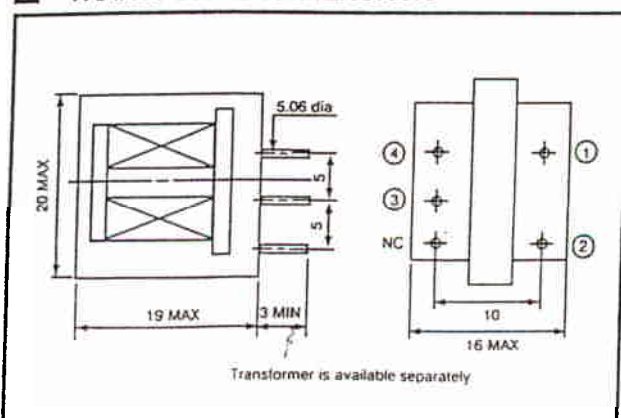


## INPUT VOLTAGE CHARACTERISTICS

(At 32cm<sup>2</sup>)



## TRANSFORMER DIMENSIONS



## INVERTER DIMENSIONS

