

46 SERIES

NEC

NEL-D32-46 (standard)
 NEL-D32-46(1) (without cover)
 D32-46 TRANS(transformer)

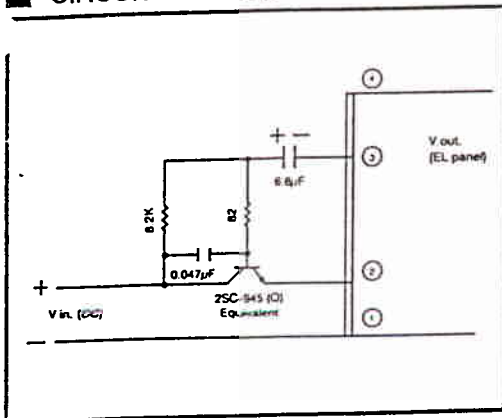
MAXIMUM RATING

Input voltage	6vDC
Load (lamp surface area)	45 cm ²
Storage temperature	-20~70°C
Operating ambient temperature	-10~55°C

ACCEPTABLE OPERATING RANGE

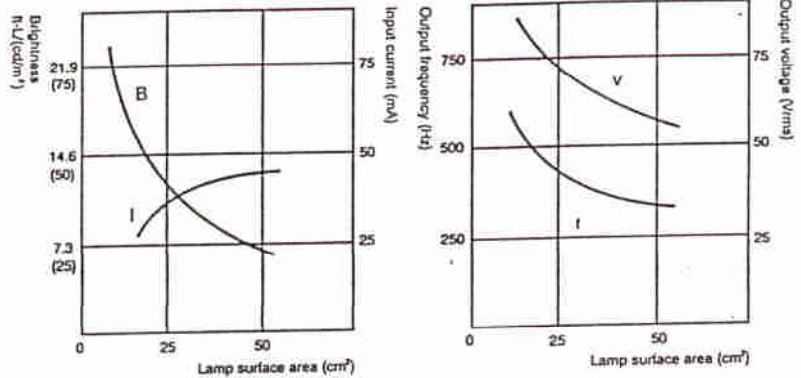
Input voltage	3~5.5v DC
Load (lamp surface area)	19~38cm ²

CIRCUIT DIAGRAM



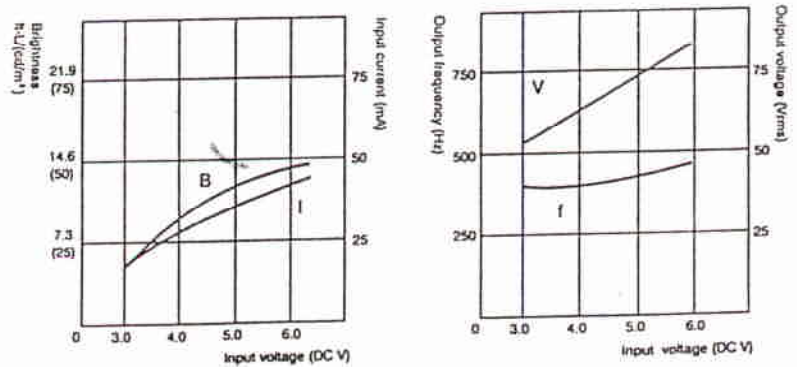
LOAD CHARACTERISTICS

(V_{in}=5VDC)

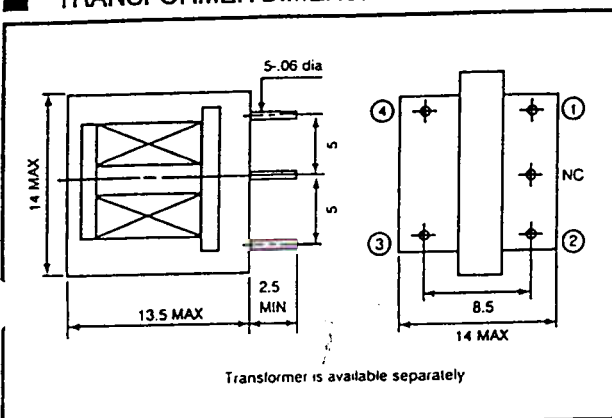


INPUT VOLTAGE CHARACTERISTICS

(At 26cm²)



TRANSFORMER DIMENSIONS



INVERTER DIMENSIONS

