

C&K DM Series Miniature 2 Pole Power Rocker Switches



Features/Benefits

- 3 AMPS to 10 AMPS
- Quick connect terminals
- Double pole in miniature size
- Recessed bracket available—prevents accidental actuation

Typical Applications

- Computers
- Appliances
- Electric ranges



Specifications

CONTACT RATING: DM2X Models: 3 AMPS @ 125 V AC; 2 AMPS @ 250 V AC (UL/CSA). DM6X Models: 10 AMPS @ 125 V AC; 5 AMPS @ 250 V AC (UL/CSA). 6 AMPS @ 125 V AC, 3 AMPS @ 250 V AC, T85 (VDE).

ELECTRICAL LIFE: 10,000 make-and-break cycles at full load.

INSULATION RESISTANCE: $10^9 \Omega$ min.

DIELECTRIC STRENGTH: 1,000 Vrms min. @ sea level.

Materials

HOUSING & ACTUATOR: 6/6 nylon (UL94V-2), black.

MOVABLE CONTACTS: DM2X Models: Copper, silver plated. DM6X Models: Coin silver, silver plated.

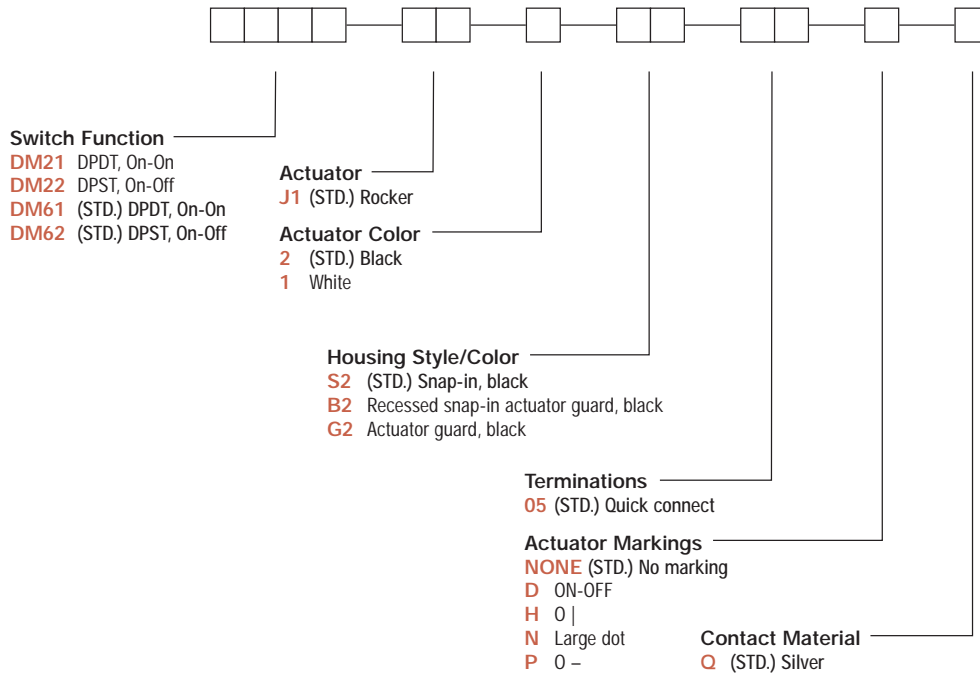
STATIONARY CONTACTS & TERMINALS: Copper or brass, silver plated.

CONTACT SPRING: Music wire or stainless steel.

NOTE: Specifications and materials listed above are for standard switches. For information on specific and custom switches, consult Customer Service Center.

Build-A-Switch

To order, simply select desired option from each category and place in the appropriate box. Available options are shown and described on pages G-57 and G-58. For additional options not shown in catalog, consult Customer Service Center.



Rocker



G

C&K DM Series Miniature 2 Pole Power Rocker Switches

SWITCH FUNCTION

NO. POLES	MODEL NO.	AMP RATING*	SWITCH FUNCTION		CONNECTED TERMINALS		SCHEMATIC
			POS. 1	POS. 2	POS. 1	POS. 2	
DP	DM22	3	ON	OFF	1-1A, 2-2A	OPEN	 DPST
	DM62 (STD.)	10					
DPDT	DM21	3	ON	ON	1-1A, 2-2A	1-1B, 2-2B	 DPDT
	DM61 (STD.)	10					

DPDT

Actuator shown in pos. 1 - 'ON' position.

Part number shown: DM61J12S205Q

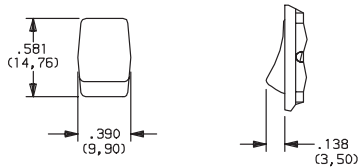
TERMINAL NUMBERS FOR REFERENCE ONLY

* RATINGS: See page G-58 for complete ratings.

All models with all options. DM6X models also , see page G-58.

ACTUATOR

J1 (STD.) ROCKER

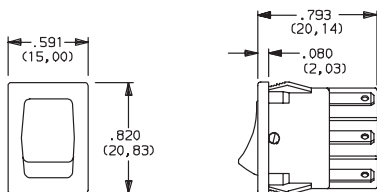


OPTION CODE	ACTUATOR COLOR
2	(STD.) BLACK
1	WHITE

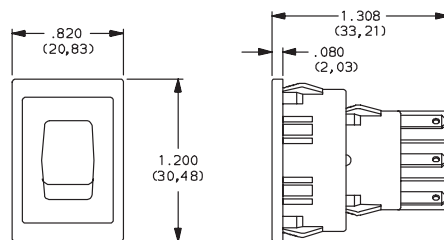
NOTE: Actuator finish: matte. Other colors available, consult Customer Service Center.

HOUSING STYLE/COLOR

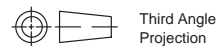
S2 (STD.) SNAP-IN, BLACK



B2 RECESSED SNAP-IN ACTUATOR GUARD, BLACK



NOTE: Housing finish: matte. Other colors available, consult Customer Service Center.



Dimensions are shown: IN (mm)
Dimensions subject to change

Rocker

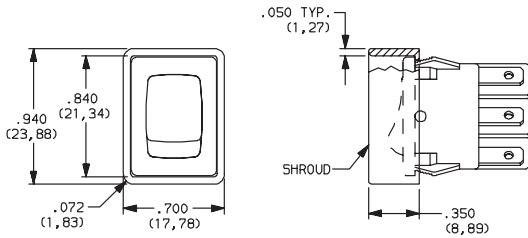
G

C&K DM Series Miniature 2 Pole Power Rocker Switches

HOUSING STYLE/COLOR

G2 ACTUATOR GUARD, BLACK

New!



PANEL MOUNTING



'S2' & 'G2' housing styles

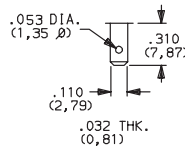
'B2' housing style

NOTE: Blank insert available for SP models only, see page G-59.

PANEL THK.	DIM 'A' 'S2' & 'G2' HOUSING STYLES	DIM 'A' 'B2' HOUSING STYLES
.030-.049 (0,75) (1,25)	.756 (19,20)	1.068 (27,13)
.049-.079 (1,25) (2,00)	.764 (19,40)	1.076 (27,33)
.079-.118 (2,00) (3,00)	.780 (19,80)	1.092 (27,74)

TERMINATIONS

05 (STD.) QUICK CONNECT



ACTUATOR MARKINGS

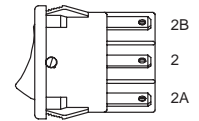
NONE (STD.) NO MARKING

D ON-OFF

H O I

N LARGE DOT

P O -



NOTE: Orientation of actuator markings and terminals.

'D' & 'P' marking options: marking color white, standard for all actuator colors except white actuators. Black marking color standard for white actuators. 'N' marking option: marking color red, standard. Consult Customer Service Center for other available marking colors.

CONTACT MATERIAL

OPTION CODE	CONTACT AND TERMINAL MATERIAL	RATINGS	
Q (STD.)	SILVER 1,2	POWER	DM2X Models: 3 AMPS @ 125 V AC; 2 AMPS @ 250 V AC (UL/CSA). DM6X Models: 10 AMPS @ 125 V AC; 5 AMPS @ 250 V AC (UL/CSA). 6 AMPS @ 125 V AC; 3 AMPS @ 250 V AC, T85 (VDE).

CONTACT MATERIAL/APPLICATION RECOMMENDATIONS - SEE SECTION N.

¹ MOVABLE CONTACT: DM2X Models: Copper, silver plated.
DM6X Models: Coin silver, silver plated.

All models with all options. DM6X models also .

² STATIONARY CONTACTS & TERMINALS: Copper or brass, silver plated.

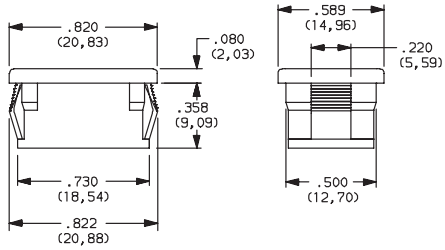


Third Angle Projection
Dimensions are shown: IN (mm)
Dimensions subject to change

C&K DM Series Miniature 2 Pole Power Rocker Switches

AVAILABLE HARDWARE

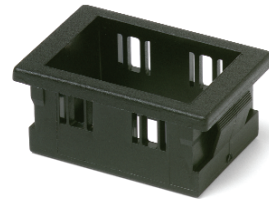
Insert



PART NO.
057190200

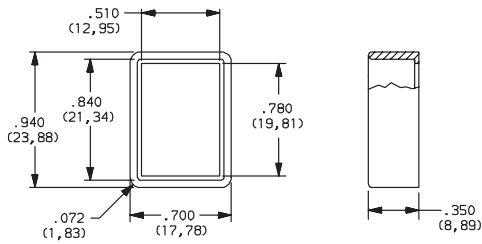
Material: Nylon 6/6
Finish: Matte

Recessed Actuator Gaurd



PART NO.
057090100
Material: 6/6 Nylon
Finish: Matte

Actuator Gaurd



PART NO.
104C02000

Material: PBT thermoplastic
Finish: Matte

Rocker



Third Angle
Projection

Dimensions are shown: IN (mm)
Dimensions subject to change