

## MUSTANG PUSHBUTTON SWITCHES

8Y

## ■ FEATURES

The 8Y Mustang Push Button Switch has a miniature body with a large dia. actuator. It is ideal where a large actuator is required for front panel balance while the space is limited inside the equipment.

## ■ SPECIFICATIONS

Rating	Max. rating	6A 125VAC (Resistive)	
	Min. rating	10mA 5VAC/DC	
Initial contact resistance	10mΩmax. (1A 2~4VDC)		
Initial dielectric strength	1,000VAC 1 minute		
Initial Insulation resistance	1,000MΩmin. (500VDC)		
Electrical life	Alternate type	40,000 operations	
	Momentary type	25,000 operations	
Operating temperature range	-20℃~+85℃		
Storage temperature range	-40℃~+85℃		

RoHS compliant

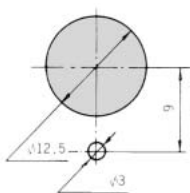


## ■ TABLE OF PART NUMBERS

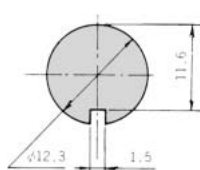
Terminal Style	Switching function	P/C terminal	Right angle
S/D (Solder)	ON - ON	8Y1011-Z	8Y2011-Z
	ON - (ON)	8Y1021-Z	8Y2021-Z

## ■ PANEL CUT - OUT DIMENSIONS

Panel thickness : 5 mm max.

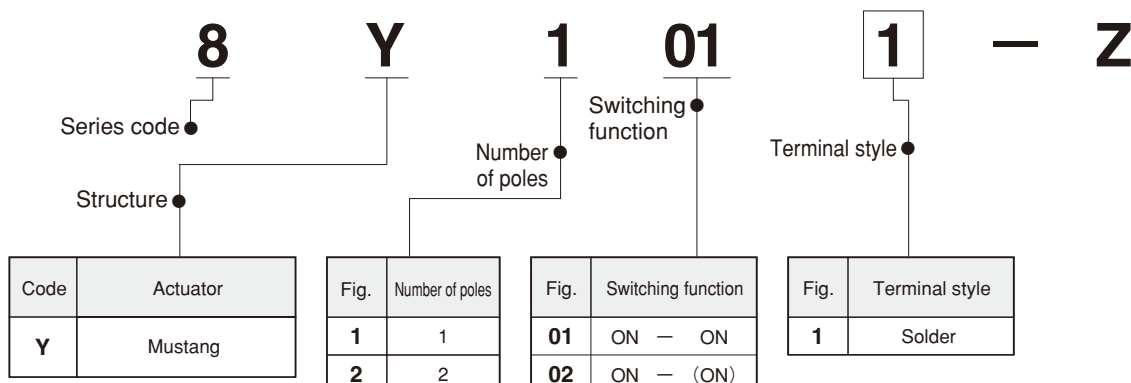


With Locking Ring



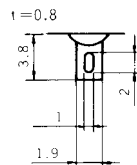
Without Locking Ring

## ■ PART NUMBERING



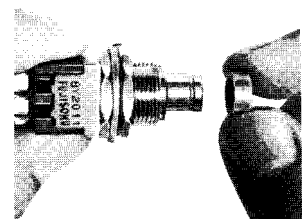
## ■ TERMINAL STYLE

Solder (Style : 1)



## ■ COLOR CAP MOUNTING

Place the cap on the switch plunger and push on.



※ Please contact us if you can't find your preferable combination in the table of part numbers.

■ Specifications are subject to change without notice. Specifications in this catalog are for reference. The formal specification sheets will be submitted upon request.

# 8Y

## MUSTANG PUSHBUTTON SWITCHES

### STANDARD ACCESSORIES

Hex Nut	Lockwasher	Locking Ring
<b>140008010243</b>	<b>140008030055</b>	<b>140008020067</b>
Nickel plated	Zinc plated	Zinc plated

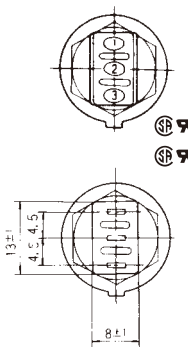
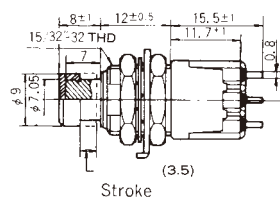
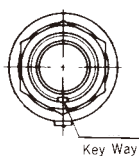
### OPTIONAL ACCESSORIES

Color Cap		
Dimensions	Color	Part No.
	White	<b>140000470023</b>
	Red	<b>140000470052</b>
	Black	<b>140000470051</b>
	Gray	<b>140000470057</b>
	Green	<b>140000470054</b>
	Blue	<b>140000470056</b>
	Yellow	<b>140000470053</b>

●Specify the color cap by partnumber if color cap is desired.

### OUTLINE DIMENSIONS

#### SPDT



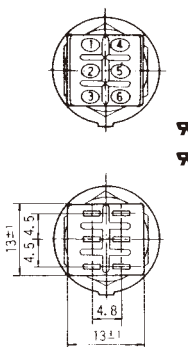
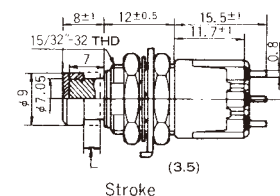
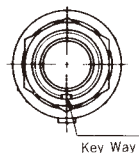
Switching function		
Part No.		
※ 8Y1011-Z	ON	ON
8Y1021-Z	ON	(ON)
Connecting terminals	2-3	2-1

※Circuit changes whenever pushed.

Terminal number not shown on box.

S/D

#### DPDT



Switching function		
Part No.		
※ 8Y2011-Z	ON	ON
8Y2021-Z	ON	(ON)
Connecting terminals	2-3 5-6	2-1 5-4

※Circuit changes whenever pushed.

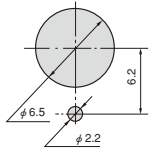
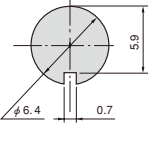
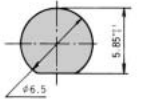
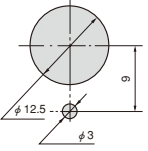
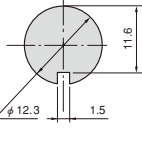
※(ON) : Momentary

Terminal number not shown on box.

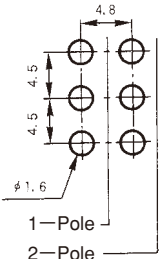
S/D

# EIGHT SWITCH SERIES

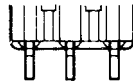
## ■ PANEL CUT-OUT DIMENSIONS

Series	8N		8P	8Y	
Panel thickness	1.5 mm Max.	2.5 mm Max.	4.5 mm Max.	5 mm Max.	6 mm Max.
Dimensions					
	With Locking Ring	Without Locking Ring		With Locking Ring	Without Locking Ring

## ■ PC HOLE LAYOUTS

Series	8N · 8P
Dimensions	 <p>1-Pole</p> <p>2-Pole</p>

## ■ TERMINAL STYLES

Solder (Style : 1)


## ■ PRECAUTIONS (8N · 8P · 8Y)

### 1. Soldering

(1) Hand soldering

Device : Solder iron

① 420 °C Max. 3 sec. Max.

(2) Auto soldering

② 275 °C ± 10 °C 5 sec. Max.

Applicable to pc terminals only. Right-angle and wire wrap terminals : Don't meet autosoldering specifications. Hand soldering should be employed after other components have been autosoldered.

### 2. Flux Cleaning

(1) Solvent : Fluorine or Alcohol type.

(2) When PC board cleaning is required,. brushing on the soldering face shall be provided so that the 8 switch series is not exposed to the cleaning solution.

## ■ OPERATING FREQUENCY

When the switch is to be operated at 25mA 20VDC or lower rating, please operate it at least once or more often a month.

## ■ PACKAGING SPECIFICATION

Perforated Plastic Bag	25 pcs/pack
