

MICRO SWITCH

A DIVISION OF HONEYWELL-HONEYWELL COMPANY

ROCKFORD, ILLINOIS

TYPE, MFR. CODE 91929

ACTUATOR - SWITCH

CATALOG LISTING

JX-40

5

(M) SKETCH 20310

ISSUE 1

REPLACES

SR 7757

RELEASE NO. SR 7757

DATE

BY

REVISION

DATE

BY

REVISION

DATE

BY

REVISION

DATE

BY

REVISION

DATE

BY

REVISION

DATE

BY

JX-40

M

SKETCH

NUMBER

12

12

12

12

12

12

12

12

12

12

12

12

12

12

12

12

12

12

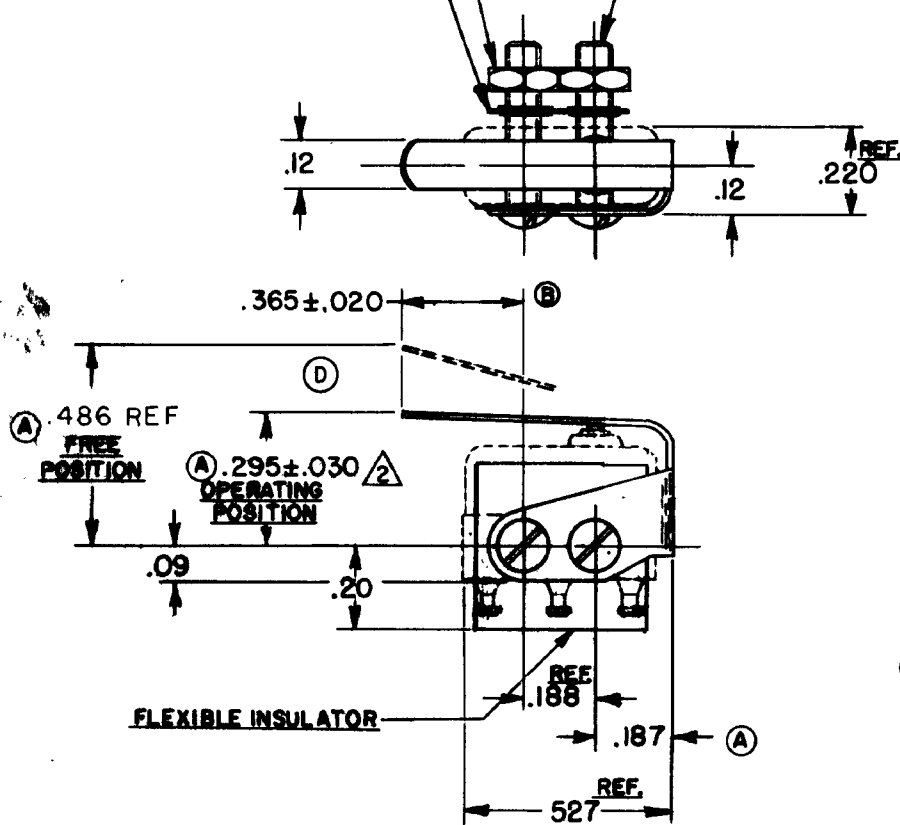
12

12

(2) 2-56 UNC HEX NUT

(2) 2-56 UNC X .438^{REF.} ROUND HEAD MACHINE SCREW.

(2) LOCKWASHER



NOTE -

- 1- SCREWS, NUTS, LOCKWASHERS AND INSULATOR FURNISHED UNASSEMBLED.
- 2- SLIGHT ROTATION BETWEEN BASIC AND ACTUATOR MAY BE NECESSARY TO OBTAIN OPERATING POSITION
- 3- WEIGHT INCLUDES BRACKET ASSEMBLY ONLY DOES NOT INCLUDE BASIC SWITCH

CHARACTERISTICS WITH ISX1-T BASIC SWITCH INSTALLED

OPERATING FORCE ---- 7 OZ MAX

RELEASE FORCE ----- 2 OZ MIN

DIFFERENTIAL TRAVEL --- .025 MAX

OVERTRAVEL ----- .015 MIN

ELECTRICAL DATA

CONTACT ARRANGEMENT

SCALE 2 TO 1

DO NOT SCALE PRINT

UNLESS OTHERWISE SPECIFIED

DIMENSIONS ARE IN INCHES

TOLERANCES ARE:

ONE PLACE (.0) ±.000

TWO PLACE (.00) ±.010

THREE PLACE (.000) ±.000

ANGLES 2

WEIGHT .003 LB MAX

3