

MICRO SWITCH

A DIVISION OF HONEYWELL INTERNATIONAL COMPANY
MILWAUKEE, WISCONSIN

FED. MFR. CODE 91929

ACTUATOR - SWITCH

CATALOG LISTING

JS-7

(M) JS-7
ISSUE 5

REPLACES

RELEASE NO.

DATE

CHECK

CHECK

CHECK

CHECK

CHECK

CHECK

JS-7

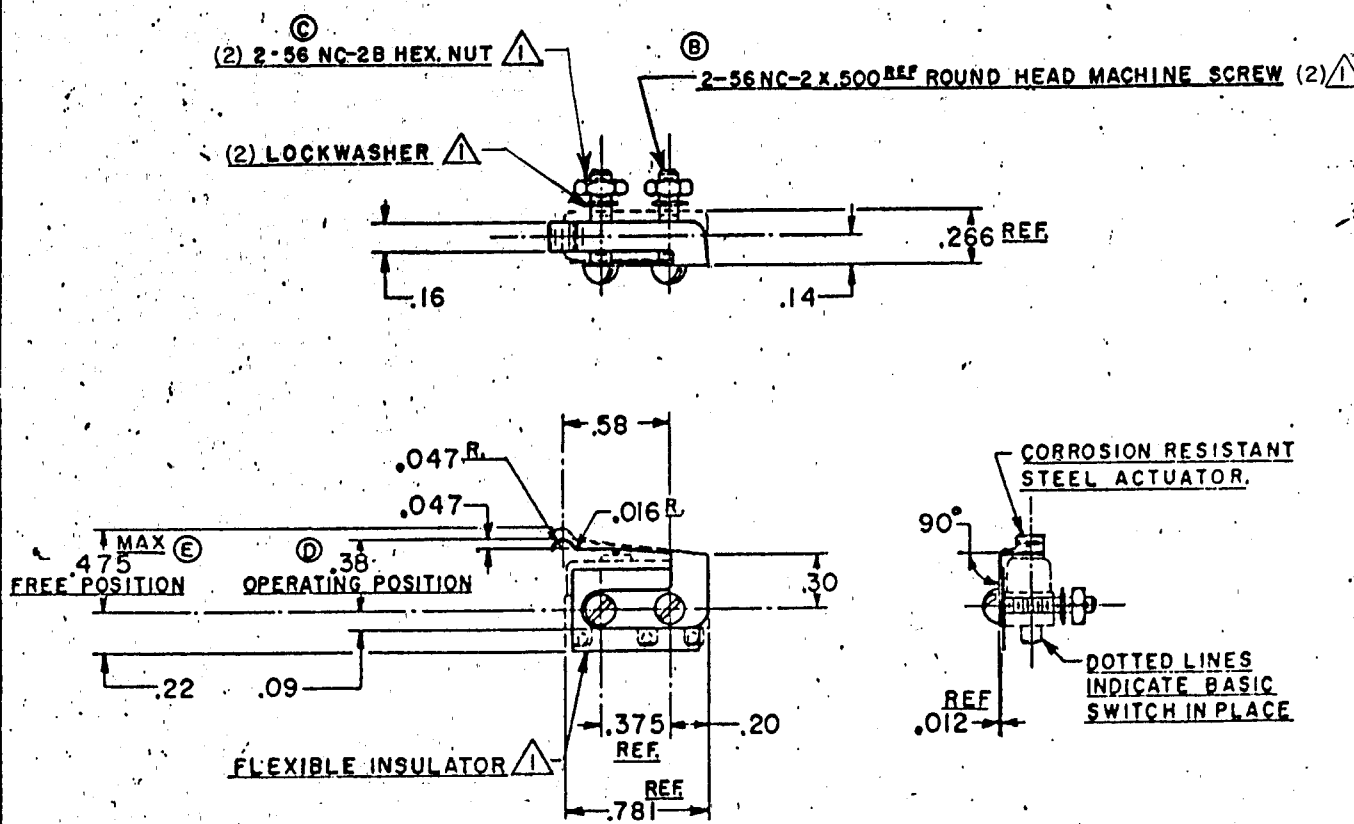
DRAWING NUMBER

13

ISSUE

8

REV	NO	DATE	BY	CHKD	DESCRIPTION
A	CO 9800	R. E. R. 23 FEB. 56			
B	CORR.	K. A. F. 13 AUG. 57			
C	CORR.	K. A. F. 18 AUG. 57			
D	CO12901	M. B. F. 11 MAY 59			
E	CO17304	M. B. F. 20 JUNE 63			
F	CO38560	J. A. L. 13 JUN 77			
G	CO47771	C. J. H. 17 MAY 80			
H	CO79303	D. L. T. 7 MAR 85			



NOTE:
▲ FURNISHED UNASSEMBLED

THIS DRAWING COVERS A PROPRIETARY ITEM AND IS THE PROPERTY OF MICRO SWITCH, A DIVISION OF HONEYWELL. THIS DRAWING IS NOT TO BE COPIED OR USED WITHOUT THE APPROVAL OF MICRO SWITCH.

CHARACTERISTICS WITH ISMI BASIC SWITCH INSTALLED

OPERATING FORCE - - - - - 10 OZ. MAX.
 (E) RELEASE FORCE - - - - - 2 OZ. MIN.
 PRETRAVEL - - - - - .094 MAX.
 DIFFERENTIAL TRAVEL - - - - - .015 MAX.
 OVERTRAVEL - - - - - .015 MIN.
 (D)

ELECTRICAL DATA

CONTACT ARRANGEMENT

BREAK DISTANCE

SCALE FULL

DO NOT SCALE PRINT

UNLESS OTHERWISE SPECIFIED
 DIMENSIONS ARE IN INCHES
TOLERANCES ARE:
 ONE PLACE (.0) ±.030
 TWO PLACE (.00) ±.015
 THREE PLACE (.000) ±.005
 ANGLES ± 1°

WEIGHT