

MICRO SWITCH

A DIVISION OF MINNEAPOLIS-HONEYWELL REGULATOR COMPANY
PROSPERITY, ILLINOIS

FED. MFR. CODE 91929

ACTUATOR-SWITCH

CATALOG LISTING

JV-20

5

JV-20

M

DRAWING NUMBER

ISSUE 13

DATE 11 MAY 56

CHECK NO. 10 MAY 56

REVISIONS A CO. 10437 R. L. H. 9 MAY 58

B C.O. 10620 J.V. 12 JULY 58

C CO 13876 M.B.F. 8 JULY 59

D CO 26511 R.E.R. 21 OCT 69

E CO 34626 R.E.R. 7 FEB 75

F CO 74163 D.H.D. 22 APR 85

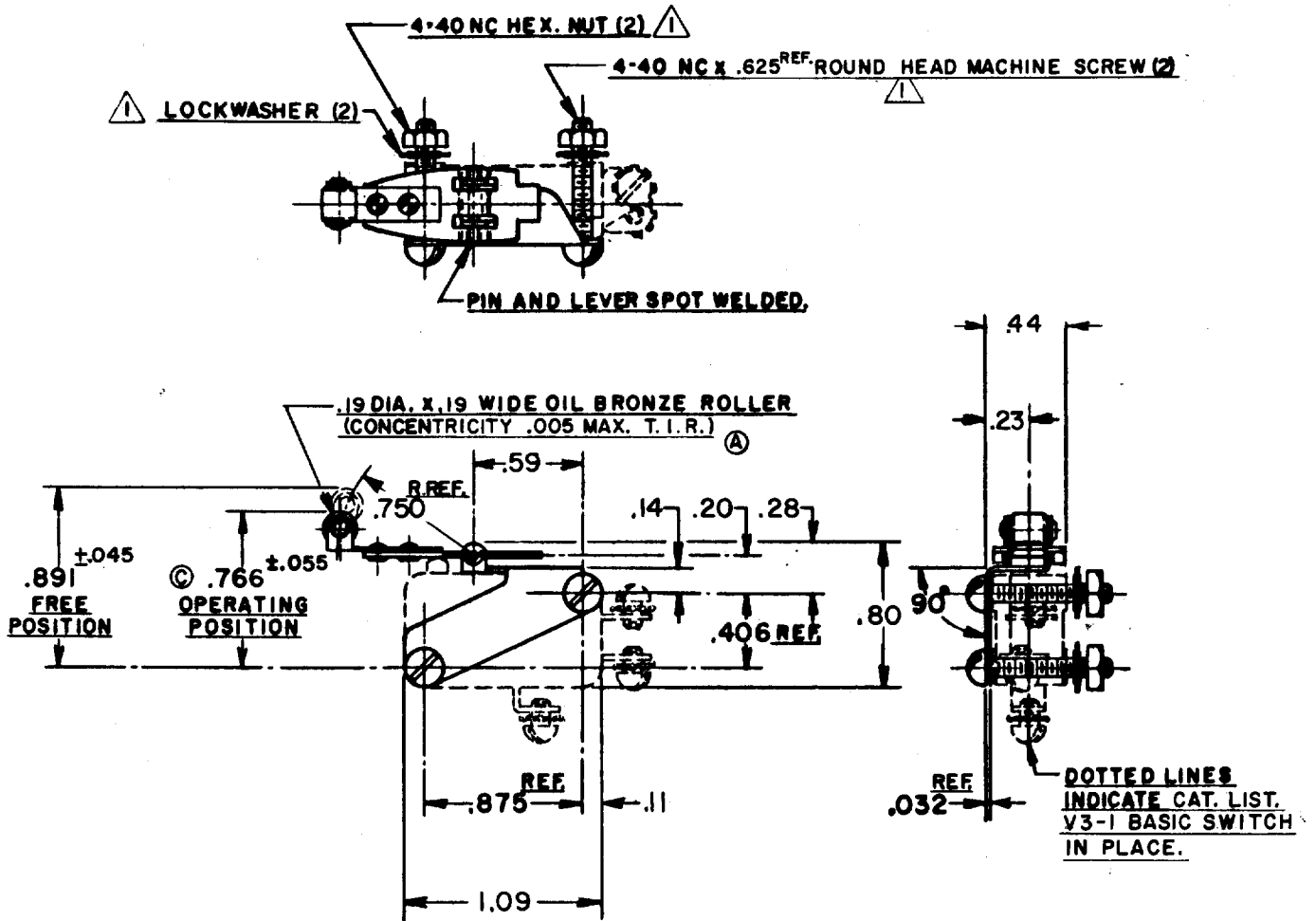
CHECK NO. 11 MAY 56

CHECK NO. 56

DRAWN R. L. H. 9 MAY 56

(M) JV-20
REPLACES ISSUE 7

RELEASE NO. 6



NOTE -

⚠ - FURNISHED UNASSEMBLED

2- ACTUATOR NOT SATISFACTORY FOR USE ON V3-600 AND 700 SERIES SWITCHES. Ⓑ

THIS DRAWING COVERS A PROPRIETARY ITEM AND IS THE PROPERTY OF MICRO SWITCH, A DIVISION OF HONEYWELL. THIS DRAWING IS NOT TO BE COPIED OR USED WITHOUT THE APPROVAL OF MICRO SWITCH.

CHARACTERISTICS WITH V3-1 BASIC SWITCH INSTALLED	ELECTRICAL DATA		SCALE FULL
OPERATING FORCE ----- 5 OZ. MAX.	CONTACT ARRANGEMENT	BREAK DISTANCE	DO NOT SCALE PRINT
RELEASE FORCE ----- 1 OZ. MIN.			UNLESS OTHERWISE SPECIFIED
PRETRAVEL ----- .198 MAX.			DIMENSIONS ARE IN INCHES
DIFFERENTIAL TRAVEL ----- .078 MAX.			TOLERANCES ARE:
OVERTRAVEL ----- .062 MIN.			ONE PLACE (.0) ±.030
			TWO PLACE (.00) ±.015
			THREE PLACE (.000) ±.005
			ANGLES ± 2°
			WEIGHT .027 LB MAX Ⓒ