

# Who's there?



With an AXS-COM audio entry system you know who's there before you open the door.



VANDAL RESISTANT



IMPACT RESISTANT



IP54 SEALED



>2 Million

OPERATIONS PER KEY



RESPONSIVE KEY ACTION



ESD PROTECTED



CE COMPLIANT



2-WAY VOICE COMMUNICATION



REMOTE DOOR RELEASE

**storm**<sup>®</sup>  
**AXS-COM**

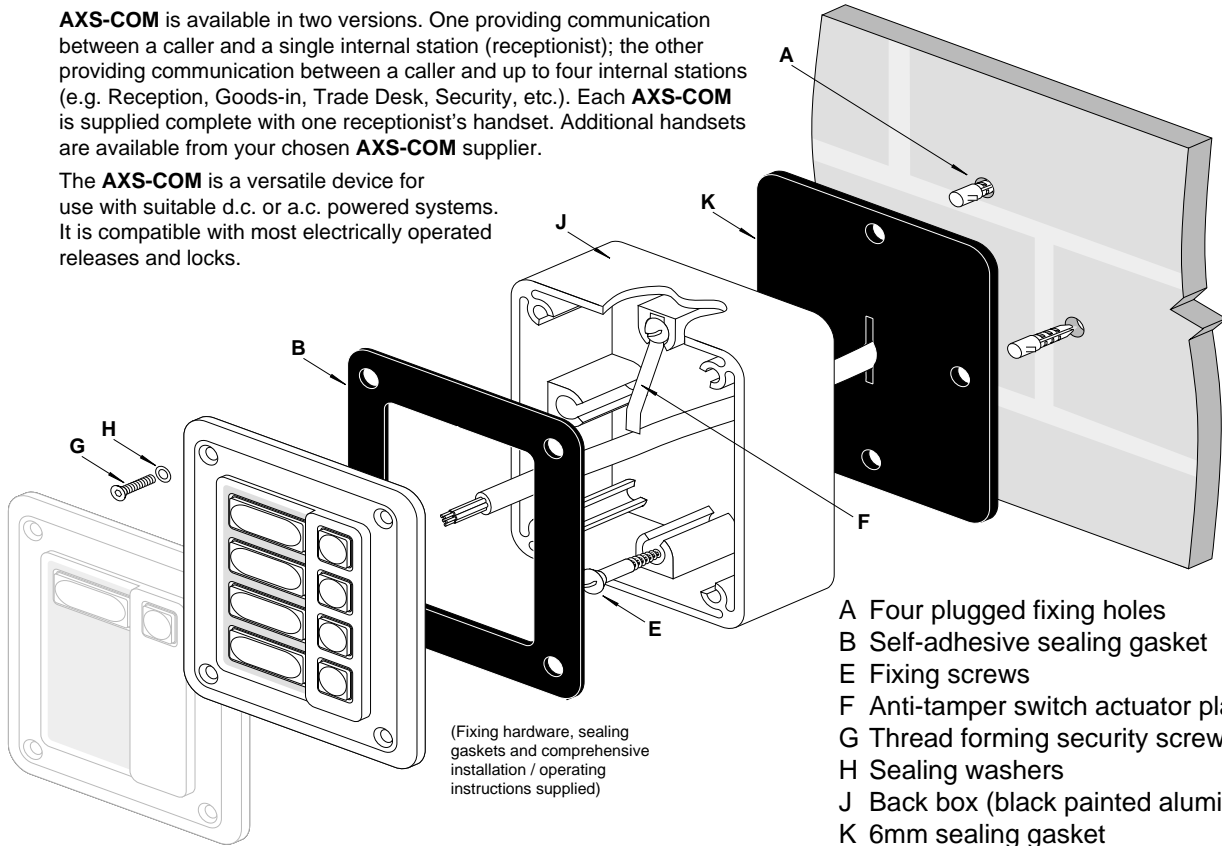
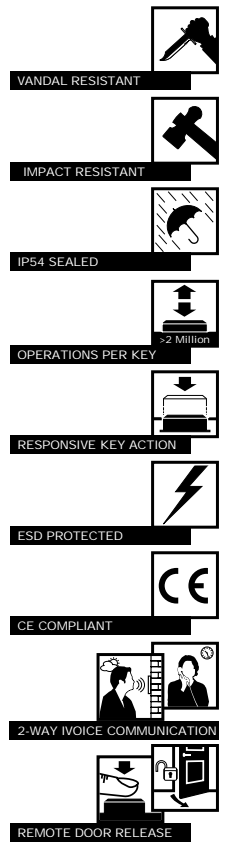
## STORM AXS-COM Intercom for Access Control.

STORM AXS-COM Intercom for Access Control is a secure, self contained, two way voice communication system. From a secure location a receptionist can talk to visitors awaiting access through a locked door. This allows the caller's identity and nature of business to be checked before allowing entry to a secure area.

The receptionist can unlock the door by pressing a remote lock-release switch incorporated in the receptionist's handset. **AXS-COM** is a "stand-alone" system; alternatively it can be used in conjunction with **STORM AXS Access Control Keypads**.

**AXS-COM** is available in two versions. One providing communication between a caller and a single internal station (receptionist); the other providing communication between a caller and up to four internal stations (e.g. Reception, Goods-in, Trade Desk, Security, etc.). Each **AXS-COM** is supplied complete with one receptionist's handset. Additional handsets are available from your chosen **AXS-COM** supplier.

The **AXS-COM** is a versatile device for use with suitable d.c. or a.c. powered systems. It is compatible with most electrically operated releases and locks.



(Fixing hardware, sealing gaskets and comprehensive installation / operating instructions supplied)

- A Four plugged fixing holes
- B Self-adhesive sealing gasket
- E Fixing screws
- F Anti-tamper switch actuator plate
- G Thread forming security screws
- H Sealing washers
- J Back box (black painted aluminium)
- K 6mm sealing gasket

### PRODUCT FEATURES

- Tough, weather-resistant and vandal-resistant construction
- d.c. System gives clear, two-way voice communication
- Anti-tamper alarm output for improved security
- 1 and 4 doorbell / call button(s)
- Quick and easy installation
- 1-4 station communication
- Can be used to control a wide range of a.c. or d.c. electric door releases and locks
- Power supply 11-28V d.c., 9-20V a.c.
- Station identity inserts provided (blank)
- Wall or flush-panel mountable
- Supplied complete with fixing hardware, back box and comprehensive installation instructions.
- 1 black d.c. handset included

PART DESCRIPTION	PART NUMBER
AXS-COM (1 Station)	IC0102
AXS-COM (4 Station)	IC0402
ACCESSORIES (AVAILABLE SEPARATELY)	
Additional Handset	HS0002
Privacy Shroud	1KFS02
Electric Releases	DEST02
Power Supply	DEPS02



FM 39602

USA Office:

**MGR**  
INDUSTRIES

450-B Industrial Drive, Fort Collins, CO 80524  
Tel: 970-221 2201 Fax: 970-484 4078