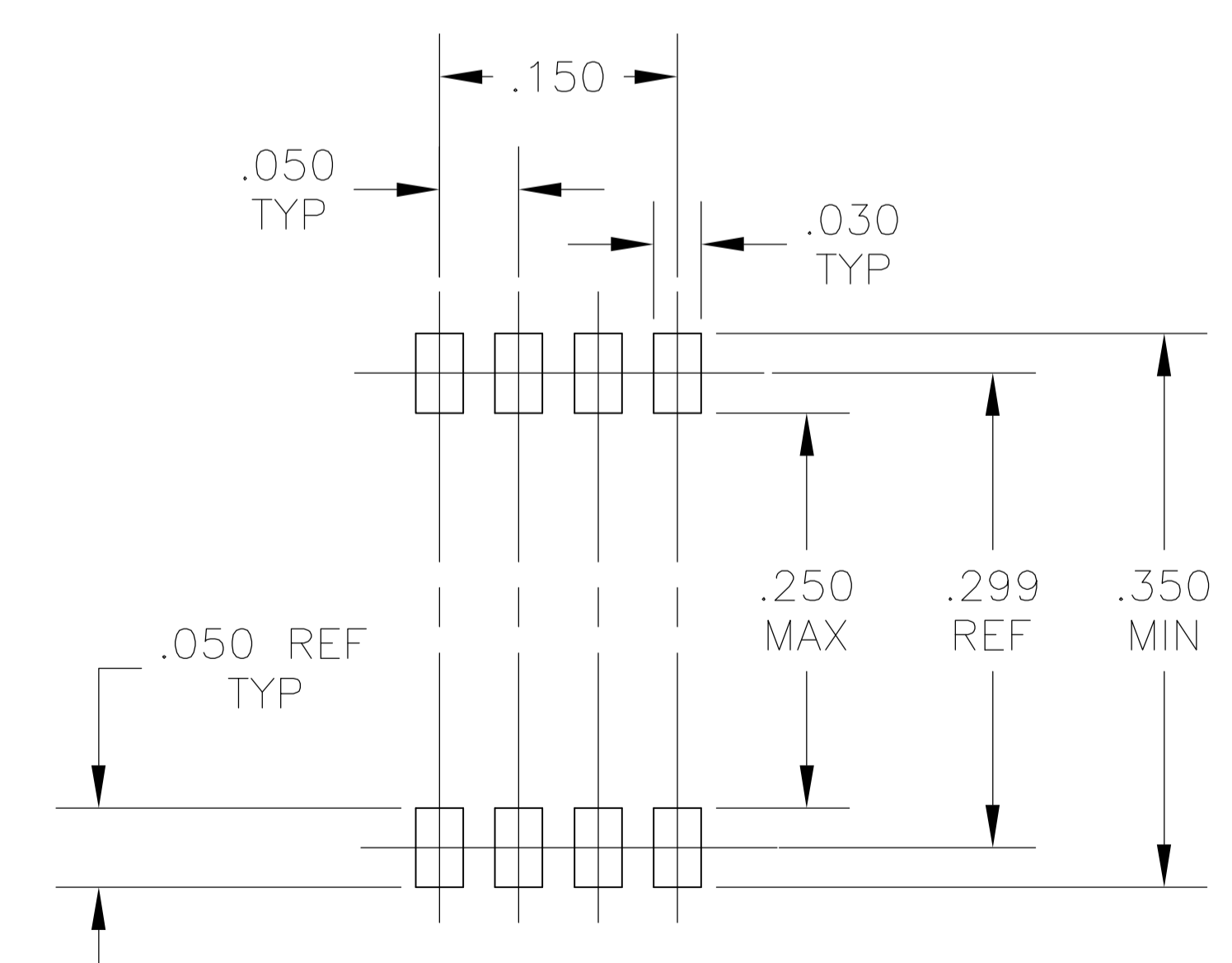
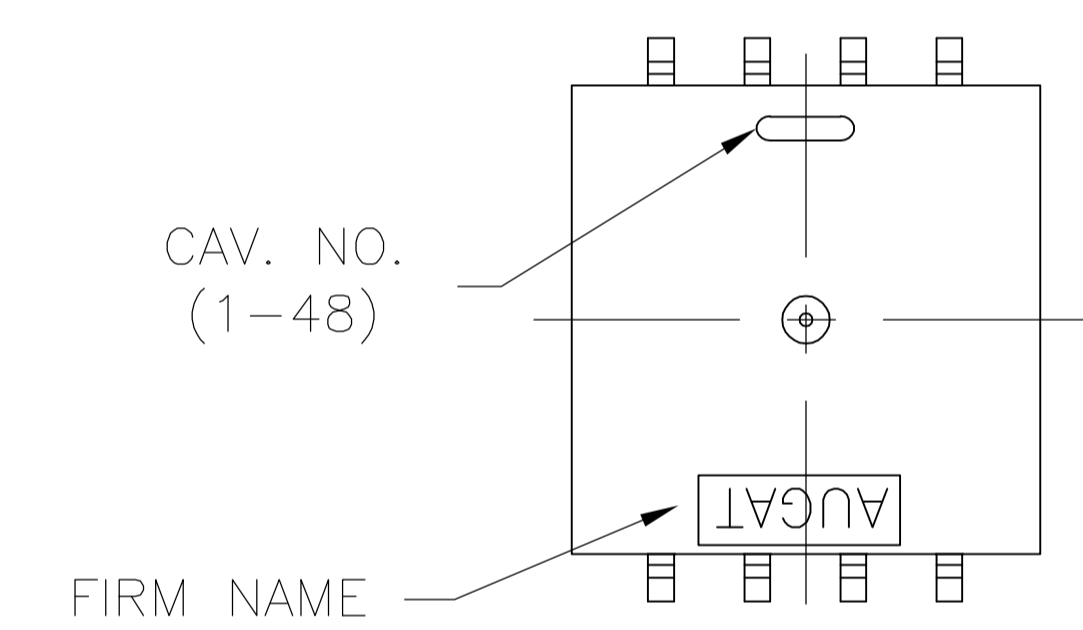
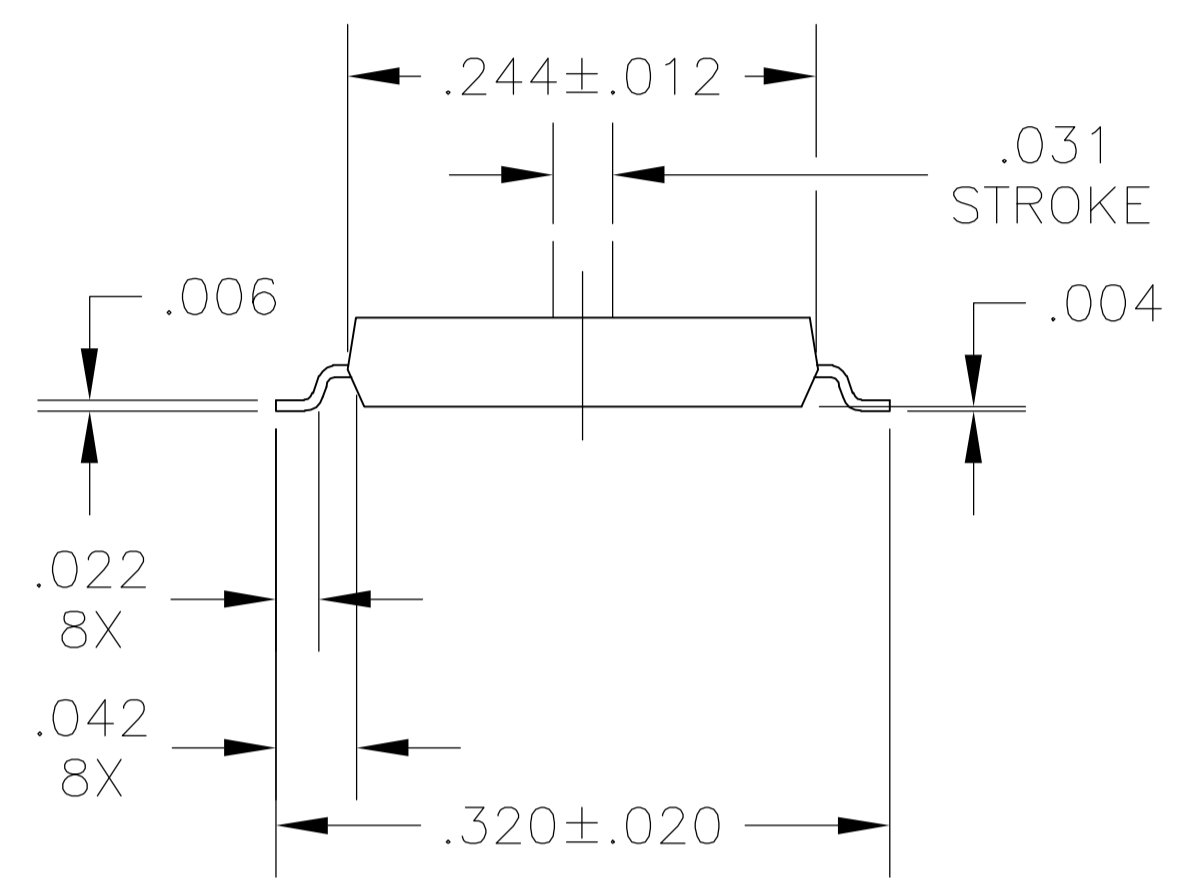
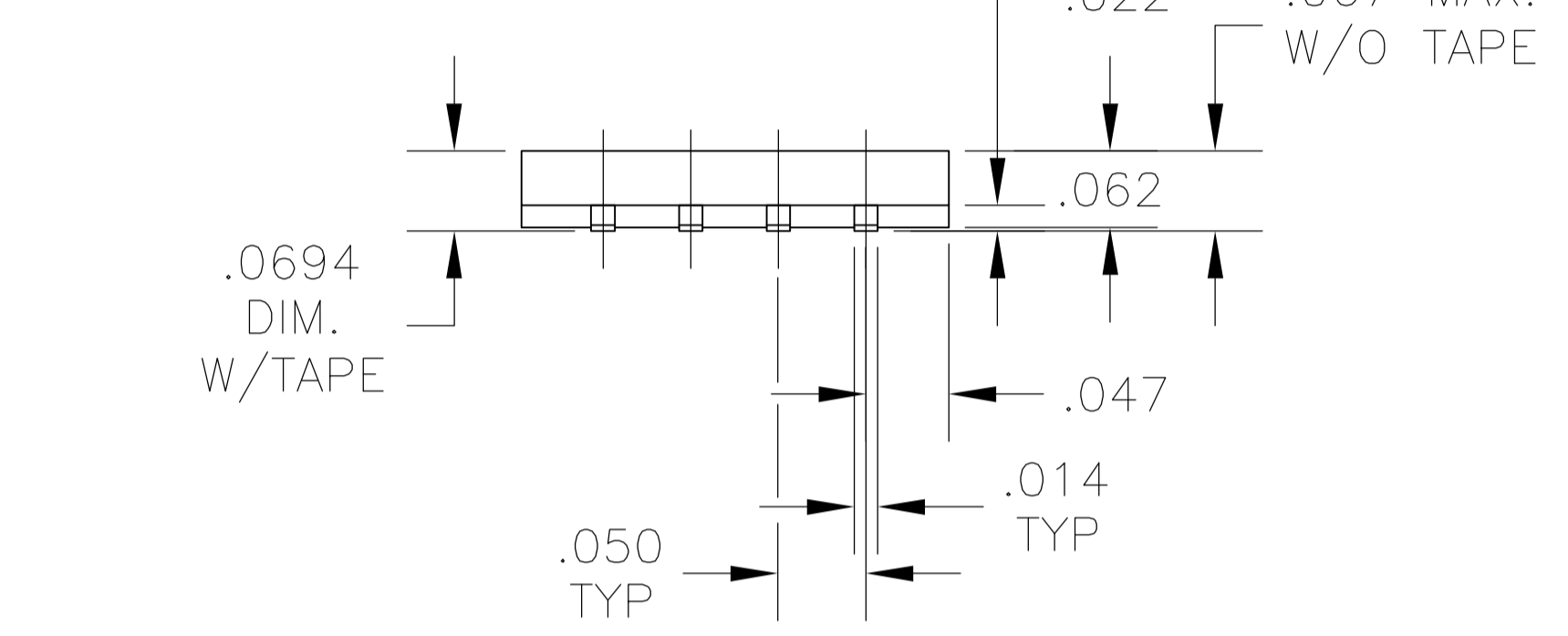
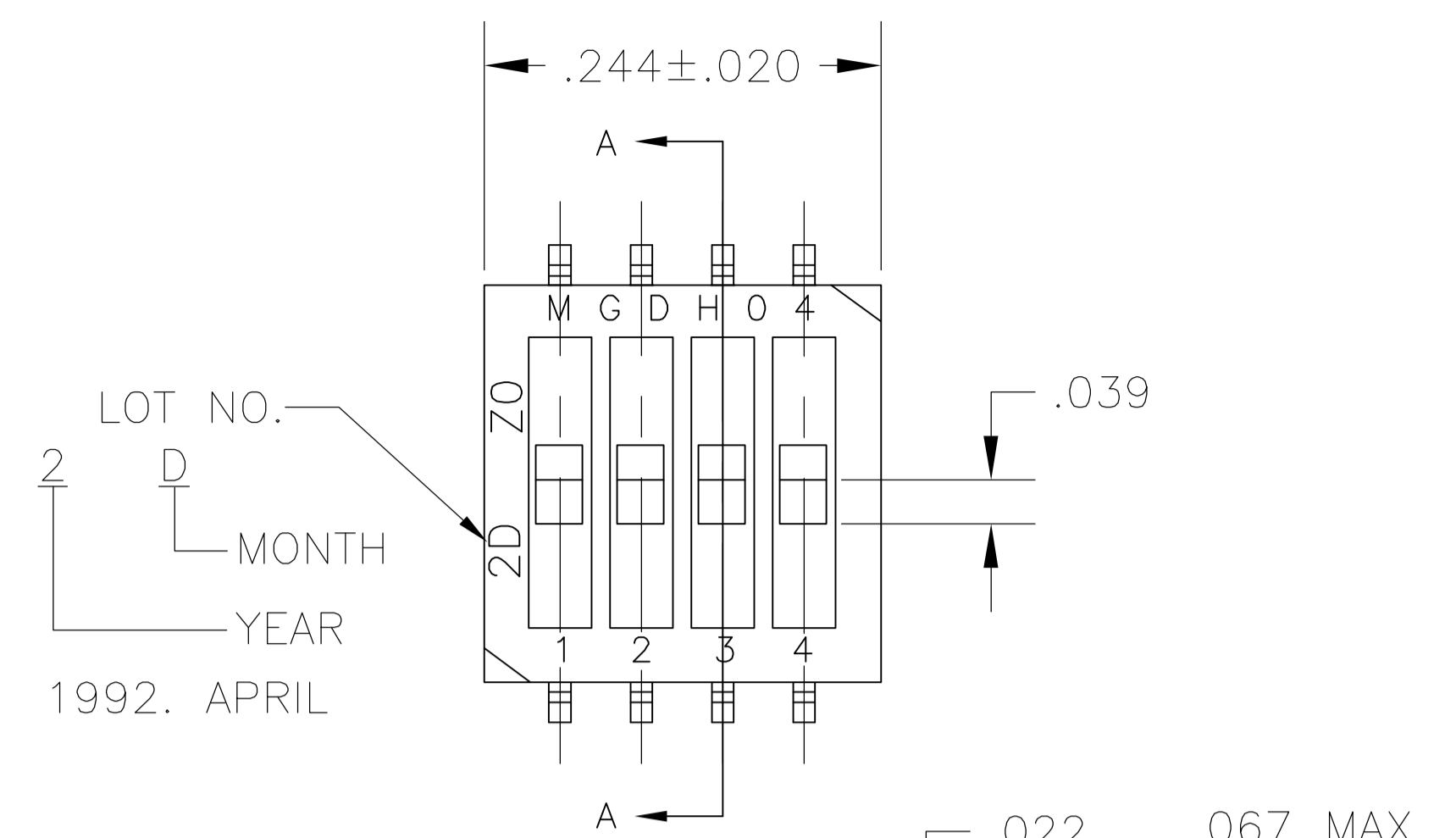


CONVERSION CHART	
INCH	MM
.002	0.05
.004	0.10
.006	0.15
.010	0.25
.012	0.30
.014	0.35
.020	0.50
.022	0.57
.031	0.80
.039	0.99
.042	1.06
.047	1.20
.050	1.27
.062	1.57
.067	1.70
.0694	1.763
.244	6.20
.320	8.12
.344	8.75



RECOMMENDED PAD LAYOUT
 TOLERANCE ±.002 UNLESS OTHERWISE NOTED

SPECIFICATIONS:

MATERIALS:

CASE-PPS UL94V-0, BLACK
 COVER-PPS UL94V-0, BLACK
 ACTUATOR-LCP UL94V-0, WHITE
 FIXED CONTACT-COPPER ALLOY, GOLD OVER NICKEL PLATE
 MOVING CONTACT-COPPER ALLOY, GOLD OVER NICKEL PLATE
 TERMINAL-COPPER ALLOY, GOLD OVER NICKEL PLATE
 TAPE SEAL-POLYIMIDE FILM

ELECTRICAL:

CONTACT RATING: NON-SWITCHING: 100 MILLIAMPS @50 VDC
 SWITCHING: 25 MILLIAMPS @24 VDC
 INITIAL CONTACT RESISTANCE: 100 MILLIOHMS MAX. @2 VDC, 10 mA.
 INSULATION RESISTANCE: 100 MEGOHMS MIN AT 100 VDC
 DIELECTRIC STRENGTH: 300 VAC, 1 MINUTE.
 LIFE EXPECTANCY: 1,000 CYCLES MIN.

MECHANICAL:

ACTUATION FORCE: 600g MAX.

ENVIRONMENTAL:

OPERATING TEMPERATURE: -22 °F TO +185°F (-30°C TO +85°C)
 STORAGE TEMPERATURE: -49°F TO +212°F (-45°C TO +100°C)
 SOLDER HEAT RESISTANCE PER 109-201, CONDITION B SWITCH IN OFF POSITION
 SOLDERABILITY PER JIS C 0050 & JIS C 0053

NOTES:

- SUPPLIED WITH TAPE SEAL STANDARD
- SWITCH IS TO HAVE OVERALL HEIGHT AS SHOWN
- ITEM TO BE PACKAGED IN TUBES, QUANTITY PER TUBE=70
- SWITCH SHALL BE MARKED AS SHOWN
- ALL MATERIALS AND FINISHES SHALL COMPLY WITH EU DIRECTIVE 2002/95/EC OF 27JAN2003 (ROHS)
- TAPE AND REEL PACKAGING PER EIA-481

2000	T&R	MGDH04STR04	1825140-2
70	TUBE	MGDH0404	1825140-1
QTY	PACKAGING	T&B P/N	TYCO P/N

THIS DRAWING IS A CONTROLLED DOCUMENT.		DIN 01MAR05		Tyco Electronics Corporation	
DIMENSIONS: INCHES		TOLERANCES UNLESS OTHERWISE SPECIFIED:		Tyco Electronics Corporation	
0 PLC ± -		1 PLC ± -		Harrisburg, Pa 17105-3608	
1 PLC ± -		2 PLC ± -		NAME	
2 PLC ± -		3 PLC ± .010		PRODUCT SPEC	
3 PLC ± -		4 PLC ± -		APPLICATION SPEC	
4 PLC ± -		ANGLES ± -		SIZE	
MATERIAL		FINISH		WEIGHT	
-		-		A1 00779 C=1825140	
CUSTOMER DRAWING		SCALE 10:1		SHEET 1 OF 1 REV 01	