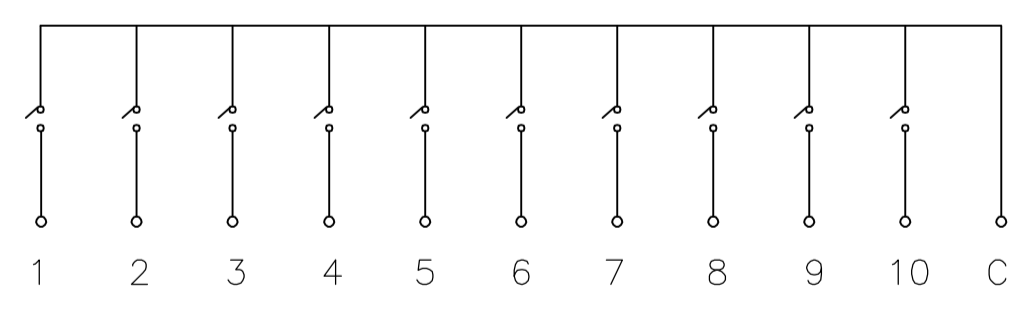
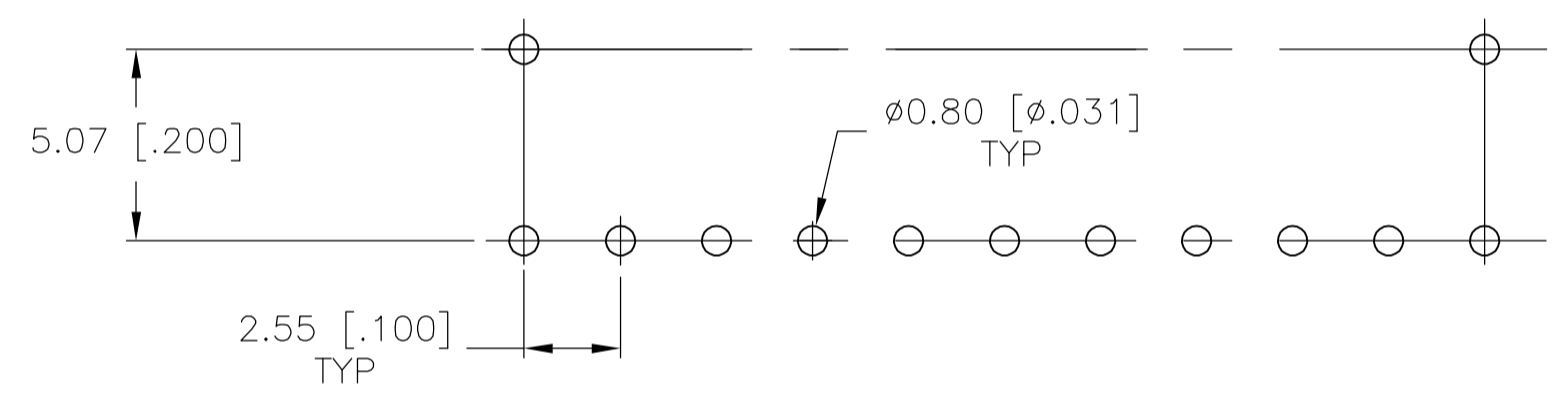


RECOMMENDED PCB HOLE LAYOUT



CIRCUIT

SPECIFICATIONS:

MATERIALS:
 BASE: PPS UL94V-0, BLACK
 COVER: PPS UL94V-0, BLACK
 ACTUATOR: 4/6 NYLON UL94V-0, WHITE
 MOVING CONTACT: COPPER ALLOY, GOLD OVER NICKEL
 FIXED CONTACT/TERMINAL- COPPER ALLOY, GOLD OVER NICKEL

ELECTRICAL:
 CONTACT RATING: .4VA@20V DC MAX
 CONTACT RESISTANCE: 50 MILLIOHMS MAX
 INSULATION RESISTANCE: 100 MEGOHMS MIN AT 100V DC
 DIELECTRIC STRENGTH: 500V AC RMS @ SEA LEVEL
 LIFE EXPECTANCY: 1,000 CYCLES

MECHANICAL:
 ACTUATION FORCE: 800 GRAMS MAX
 TRAVEL: .050

ENVIRONMENTAL:
 OPERATING TEMPERATURE: -30° TO +85°C
 STORAGE TEMPERATURE: -45° TO +100°C
 RESISTANCE TO SOLDER HEAT: 265±3°C FOR 8±2 SECONDS
 SOLDERABILITY PER JIS C 0050 & JIS C 0053

NOTES:

- ALL MATERIALS AND FINISHES SHALL COMPLY WITH EU DIRECTIVE 2002/95/EC OF 27JAN2003 (ROHS)
- △ MARK "ALCO" ON THIS SURFACE.

28.91[1.138]	25.40[1.000]	27.89[1.098]	SSH10	1825153-5
23.83[.938]	20.32[.800]	22.81[.898]	SSH08	1825153-4
18.75[.738]	15.24[.600]	17.73[.698]	SSH06	1825153-3
13.67[.538]	10.16[.400]	12.65[.498]	SSH04	1825153-2
8.59[.338]	5.08[.200]	7.57[.298]	SSH02	1825153-1
DIM "K"	DIM "H"	DIM "L"	T&B P/N	TYCO P/N

THIS DRAWING IS A CONTROLLED DOCUMENT.		DIN B.S.VISWESWARA DEMAYOS		Tyco Electronics Corporation	
DIMENSIONS: mm [INCHES]		CHK M. S. SARVER		Harrisburg, PA 17105-3608	
TOLERANCES UNLESS OTHERWISE SPECIFIED:		APVD		NAME	
0 PLC ± -		PRODUCT SPEC		ASSEMBLY-SIP SWITCH (SSH02-10 SERIES)	
1 PLC ± -		APPLICATION SPEC		SIZE CAGE CODE DRAWING NO	
2 PLC ± -		MATERIAL SEE SPECIFICATIONS		A1 00779 C=1825153	
3 PLC ± ± 0.25(.010)		WEIGHT		RESTRICTED TO	
4 PLC ± ± -		CUSTOMER DRAWING		SCALE 5:1 SHEET 1 OF 1 REV A1	
ANGLES ± ± -		SCALE 5:1		SHEET 1 OF 1	