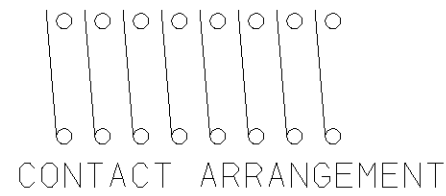


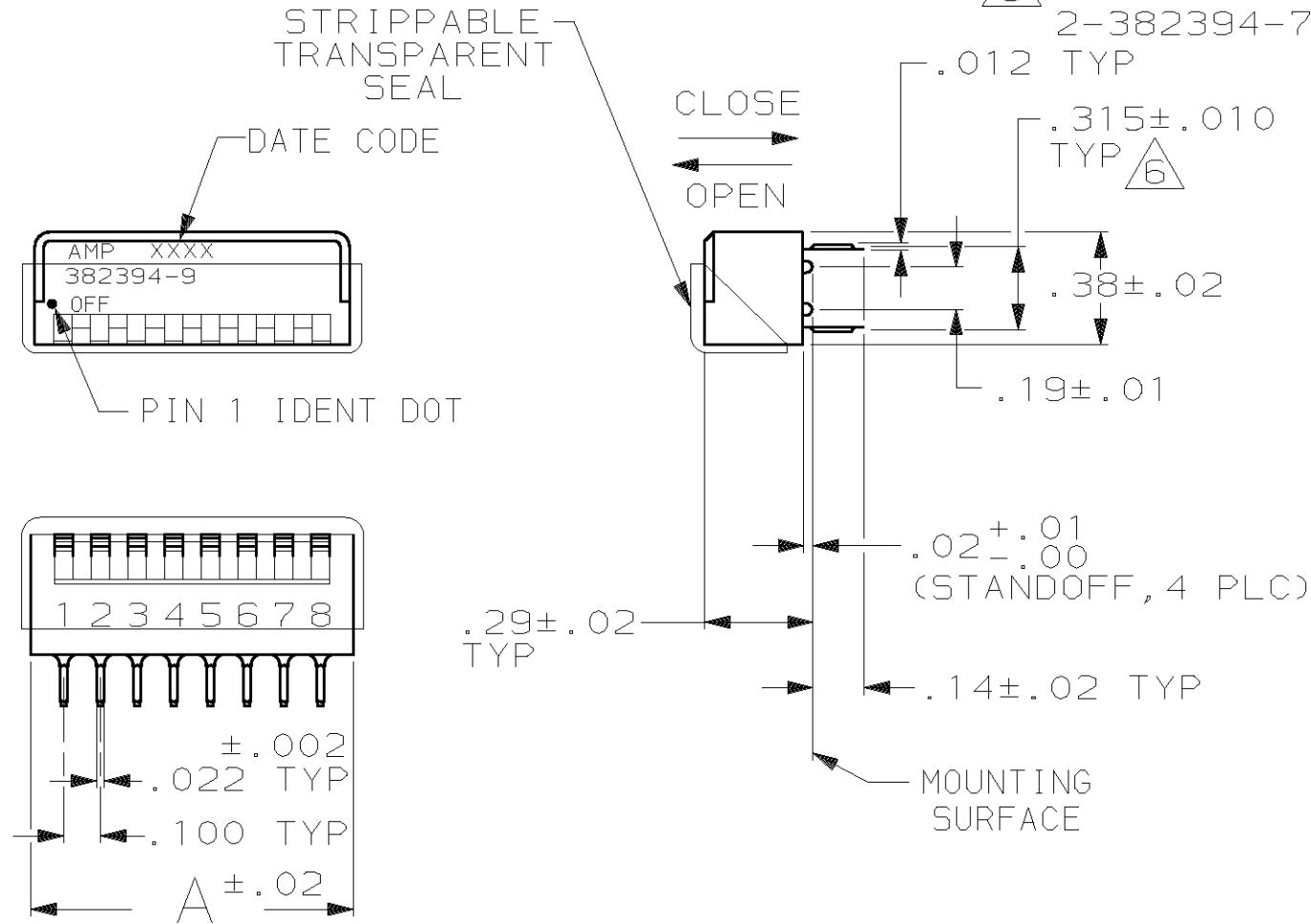
THIS DRAWING IS UNPUBLISHED. RELEASED FOR PUBLICATION, 19
 © COPYRIGHT 19 BY AMP INCORPORATED. ALL INTERNATIONAL RIGHTS RESERVED.

LOC FT	DIST 64	P	F	REVISIONS			DATE	APPD
				ZONE	LTR	DESCRIPTION		
					K	REV PER 063C-0045-02	09JUL02	HW



- △7 CONTACTS ARE PLATED .000050 MIN GOLD OVER NICKEL, IN CONTACT AREA.
- △8 NO POSITION MARKING.
- △9 SEE RESTRICTED CUSTOMER DRAWING 2-382394-7.

- 1. SWITCH SHOWN IN OPEN POSITION.
- △2 HOUSING & ROCKERS ARE POLYESTER, CONTACTS ARE BERYLLIUM COPPER.
- △3 CONTACTS ARE PLATED .000030 MIN GOLD OVER NICKEL, IN CONTACT AREA.
- 4. ALL CHARACTERS & ROCKERS ARE WHITE, HOUSING IS BLACK.
- 5. FOR ADDITIONAL SWITCH SPECIFICATIONS SEE AMP PRODUCT SPEC. 108-7519.
- △6 .315 DIMENSION APPLIES AT TERMINAL TIPS. TERMINALS ARE .300^{+0.010}/_{-0.000} AT MOUNTING SURFACE.



OBSOLETE	-	-	-	△9
OBSOLETE △8	△3	8	.88	2-382394-6
OBSOLETE △8	△3	5	.58	2-382394-5
OBSOLETE △8	△3	4	.48	2-382394-4
OBSOLETE	△7	12	1.28	2-382394-3
		12	1.28	2-382394-2
		10	1.08	2-382394-0
		9	.98	1-382394-9
		7	.78	1-382394-8
		6	.68	1-382394-7
	△3	5	.58	1-382394-6
		4	.48	1-382394-5
		8	.88	382394-9

SUPERSEDED BY 4-1437590-3
 SUPERSEDED BY 3-1437587-0
 SUPERSEDED BY 2-1437587-5
 SUPERSEDED BY 3-1437590-8
 SUPERSEDED BY 2-1437587-0
 SUPERSEDED BY 3-1437590-5

SUPERSEDED BY 4-1437590-0
 382394-9 SHOWN

DO NOT SCALE PRINT. UNLESS SPECIFIED DIMENSIONS IN INCHES TOLERANCES ON: 2 PLC DEC ± - 3 PLC DEC ± .005 ANGLES ± -		DR K. SALMON 2/10/89	AMP INCORPORATED Harrisburg, Pa. 17105
MATERIAL △2		CHK RLM 2/10/89	
FINISH SEE TABLE		APPD HAROLD LEITER	NAME SWITCH ASSY, DIP, TYPE "C", 7000 SERIES, BLACK, SIDE ACTUATED
		PRODUCT SPEC -	SIZE B
		APPLICATION SPEC -	FSCM NO 00779
		WEIGHT -	DRAWING NO 382394
			SCALE 2:1
			SHEET 1 OF 1