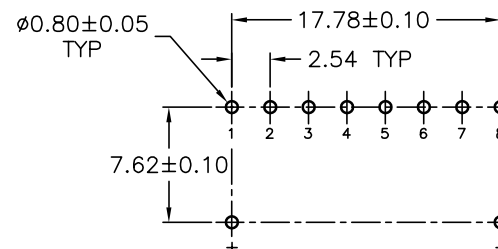
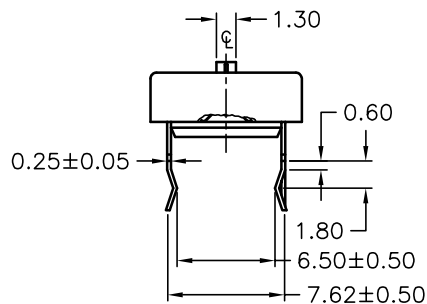
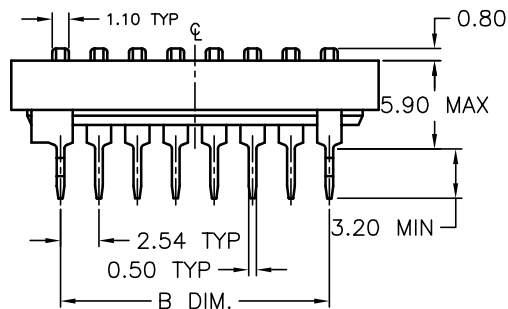
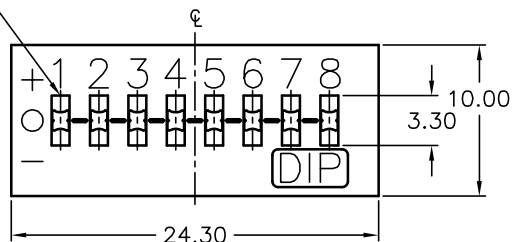
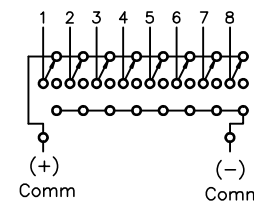


POS. 1 DESIGNATE  
PIN #1 LOCATION



RECOMMENDED PCB LAYOUT



CONTACT CONFIGURATION  
POS. 1 DENOTES PIN #1

NOTES:

1. ALL DIMENSIONS IN MM
2. GENERAL TOLERANCE: 0.0±0.4  
0.00±0.25
3. TERM. NOS. FOR REF. ONLY
4. SWITCHES SUPPLIED IN DESPENSING TUBES  
PACKAGE WITH ALL POLES IN  
THE "OFF" POSITION- 19 SWITCHES/TUBE
5. CONTACT RATING: 25mA @24V DC
6. OPERATING LIFE: 2,000 make-and-break cycles
7. OPERATING FORCE: 1000gf max.
8. TRAVEL: 2.0mm typical
9. DIELECTRIC STRENGTH: 500V RMS min @seal level  
between adj. term.
10. TEMP. RANGE: -40C to 85C

**E-SWITCH®**

TITLE					KAT1108E (8 Pos. DIP Switch) Package in Tubes				
SCALE	3:1	DATE	6/27/00	DR	MM	DWG	N711080	REV	B

B	13577	REMOVE TABLE	11/5/03	AR
A	10710	RELEASED FOR PRODUCTION	6/27/00	MM
REV.	ECN No.	DESCRIPTION	DATE	CHKD

THE INFORMATION CONTAINED IN THIS DOCUMENT  
IS PROPRIETARY TO E-SWITCH AND IS  
NOT TO BE COPIED OR TRANSFERRED