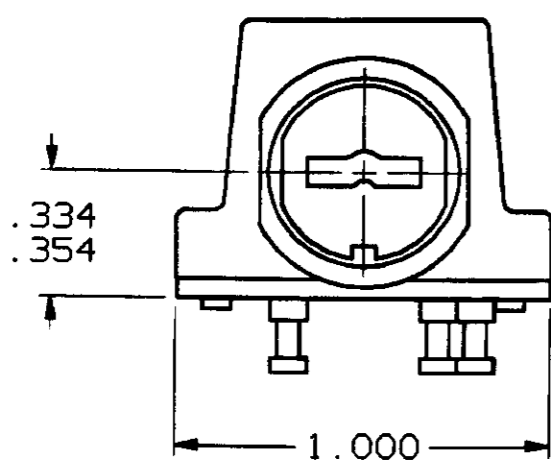
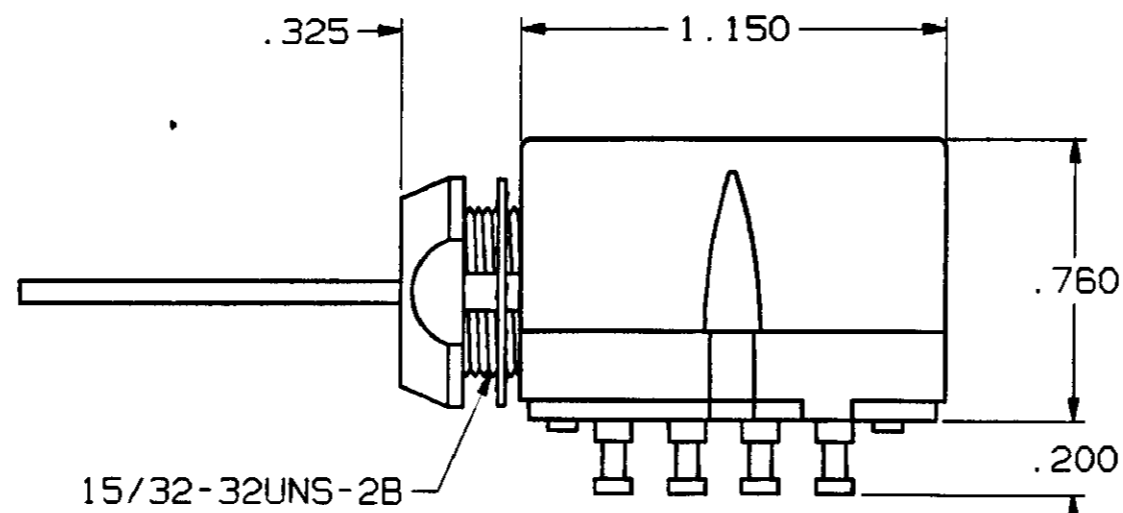


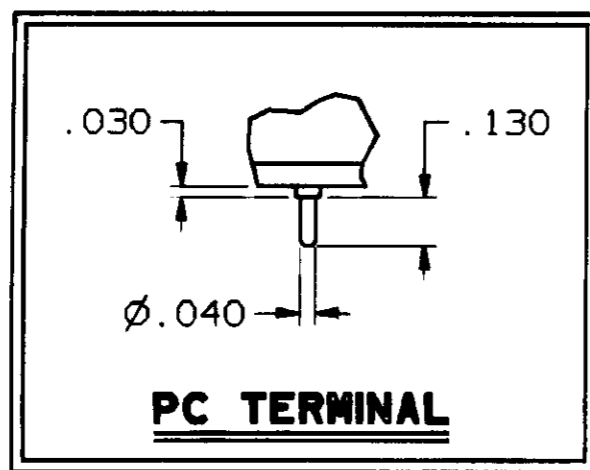
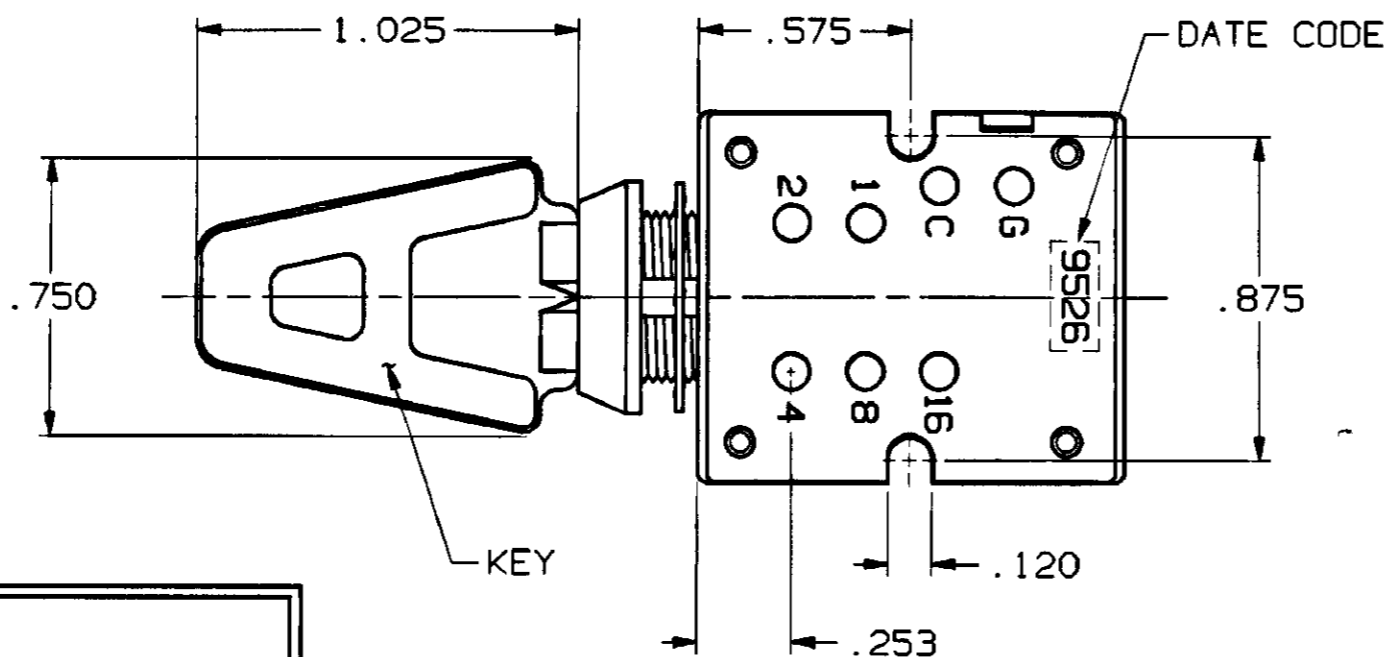
CONVERSION CHART	
INCH	MM
.005	0.13
.035	0.89
.040	1.02
.062	1.57
.100	2.54
.120	3.05
.130	3.30
.200	5.08
.253	6.43
.325	8.26
.334	8.48
.354	8.99
.400	10.16
.438	11.13
.472	11.99
.575	14.61
.760	19.30
.875	22.23
1.000	25.40
1.025	26.04
1.150	29.21



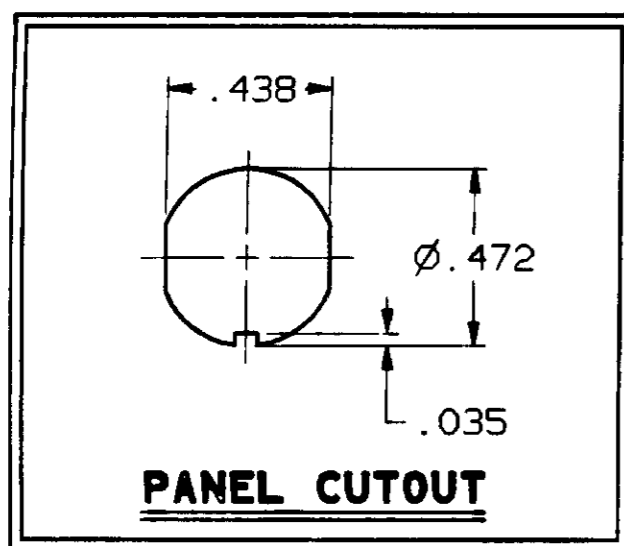
VIEW SHOWN WITH KEY REMOVED



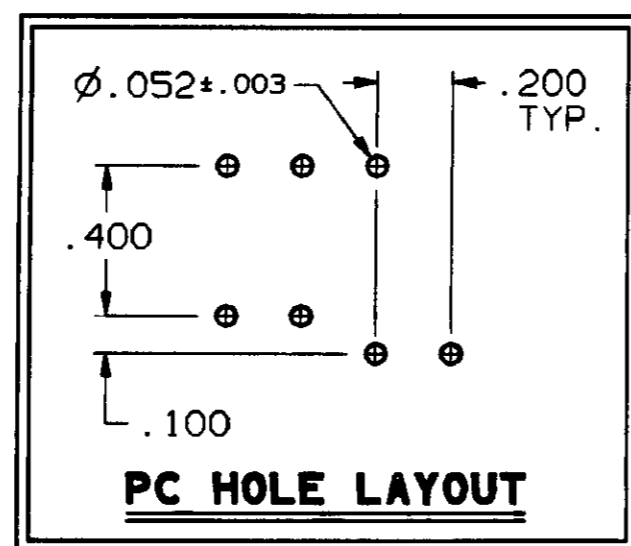
TURRET TERMINALS



PC TERMINAL



PANEL CUTOUT



PC HOLE LAYOUT

SPECIFICATIONS:

MATERIALS:

HOUSING: ZINC ALLOY
 CONTACT INSULATOR: POLYACETAL
 MOVING CONTACTS: GOLD, OVER NICKEL PLATE, OVER COPPER ALLOY.
 KEY GUIDE: POLYAMID
 KEY: COPPER ALLOY
 FIXED TERMINALS: GOLD, OVER NICKEL PLATE, OVER COPPER ALLOY.

ELECTRICAL:

CONTACT RATING: 0.4VA MAX. @ 20VDC OR PEAK AC
 CONTACT RESISTANCE: 50 MILLIOHMS MAX.
 INSULATION RESISTANCE: 1000 MEGOHMS @ 500 VDC MIN.
 DIELECTRIC STRENGTH: 1000 VOLTS RMS @ SEA LEVEL.
 LIFE: 25,000 CYCLES.

ENVIRONMENTAL:

OPERATING TEMPERATURE: -22F TO +185°F, (-30°C TO +85°C).
 OPERATING TEMPERATURE: -22F TO +185°F, (-30°C TO +85°C).

NOTES: UNLESS OTHERWISE SPECIFIED

- INTERPRET DRAWING PER ANSI Y14.5M 1982.
- SUPPLIED WITH KEY NUMBER 15.
- DATE CODE SHALL BE LABELED ON THE UNDERSIDE OF THE SWITCH AS NOTED. THE DATE CODE IS DEFINED AS SHOWN BELOW.

DATE CODE
 YEAR 95 26 WEEK

DATA CODE CHART

KEY CODE NUMBER:	NO KEY																KEY SUPPLIED																
	0	1	2	3	4	5	6	7	8	9	10	11	12	13	14	15	16	17	18	19	20	21	22	23	24	25	26	27	28	29	30	31	
1	●	●	●	●	●	●	●	●	●	●	●	●	●	●	●	●	●	●	●	●	●	●	●	●	●	●	●	●	●	●	●	●	●
2	●	●	●	●	●	●	●	●	●	●	●	●	●	●	●	●	●	●	●	●	●	●	●	●	●	●	●	●	●	●	●	●	●
4	●	●	●	●	●	●	●	●	●	●	●	●	●	●	●	●	●	●	●	●	●	●	●	●	●	●	●	●	●	●	●	●	●
8	●	●	●	●	●	●	●	●	●	●	●	●	●	●	●	●	●	●	●	●	●	●	●	●	●	●	●	●	●	●	●	●	●
16	●	●	●	●	●	●	●	●	●	●	●	●	●	●	●	●	●	●	●	●	●	●	●	●	●	●	●	●	●	●	●	●	●
C	●	●	●	●	●	●	●	●	●	●	●	●	●	●	●	●	●	●	●	●	●	●	●	●	●	●	●	●	●	●	●	●	●

● CIRCUIT CLOSED WITH KEY IN
 G DESIGNATES TERMINAL TO HOUSING GROUND

CUSTOMER DRAWING			
SPECIFICATIONS ARE SUBJECT TO CHANGES WITHOUT NOTICE			
THIRD ANGLE PROJECTION TOLERANCES (EXCEPT AS NOTED) ANGULAR = ± 1° DECIMAL .XXX = ± .010	UNLESS OTHERWISE SPECIFIED DIMENSIONS ARE IN INCHES DO NOT SCALE PRINT MATERIAL:	ORIGINAL DATE OF DRAWING: 4-7-81	DRAWN: R. WICIEL DATE: 4-7-81 CHECKED: B. BUCKHEIT DATE: 4-8-81 APPROVED: R. M. M. DATE: 4-10-81
		TYCO CONFIDENTIAL This document contains information which is the exclusive property of TYCO ELECTRONICS Distribution, reproduction or use by others is not permitted without the expressed written consent of Augat Inc.	

AUGAT D/N 40062-SD

THIS IS A C.A.D. GENERATED DRAWING. DO NOT MAKE MANUAL REVISIONS TO MASTER.

TYCO ELECTRONICS

TITLE: CUSTOMER DRAWING
 SKC31 SERIES

DWG. NO. 1437599-3
 PRODUCT CODE: G52
 SCALE: 2:1 SHEET 1 OF 1

REV A
 REVISIONS 0G3C-0173-02