



**MICRO SWITCH**  
 FREEPORT, ILLINOIS, U.S.A.  
 A DIVISION OF HONEYWELL

FED. MFG. CODE 91929

# ASSEMBLY - PUSHBUTTON SWITCH

CATALOG LISTING

## 2PB12-T2

2PB12-T2  
 PAGE 1 OF 1

M

DRAWING  
 NUMBER

8

ISSUE

REVISIONS

|   |          |       |           |
|---|----------|-------|-----------|
| A | CO 19800 | M B F | 28 JAN 65 |
| B | CO31782  | D B W | 16 MAR 73 |
| C | CO-93593 | P P F | 23 OCT 98 |
| D | CO 94273 | G J W | 15 APR 99 |

REPLACES

RELEASE NO.

CHECK

98

23 OCT 98

16 MAR 73

23 OCT 98

15 APR 99

CHECK

3 FEB 65

3 FEB 65

3 FEB 65

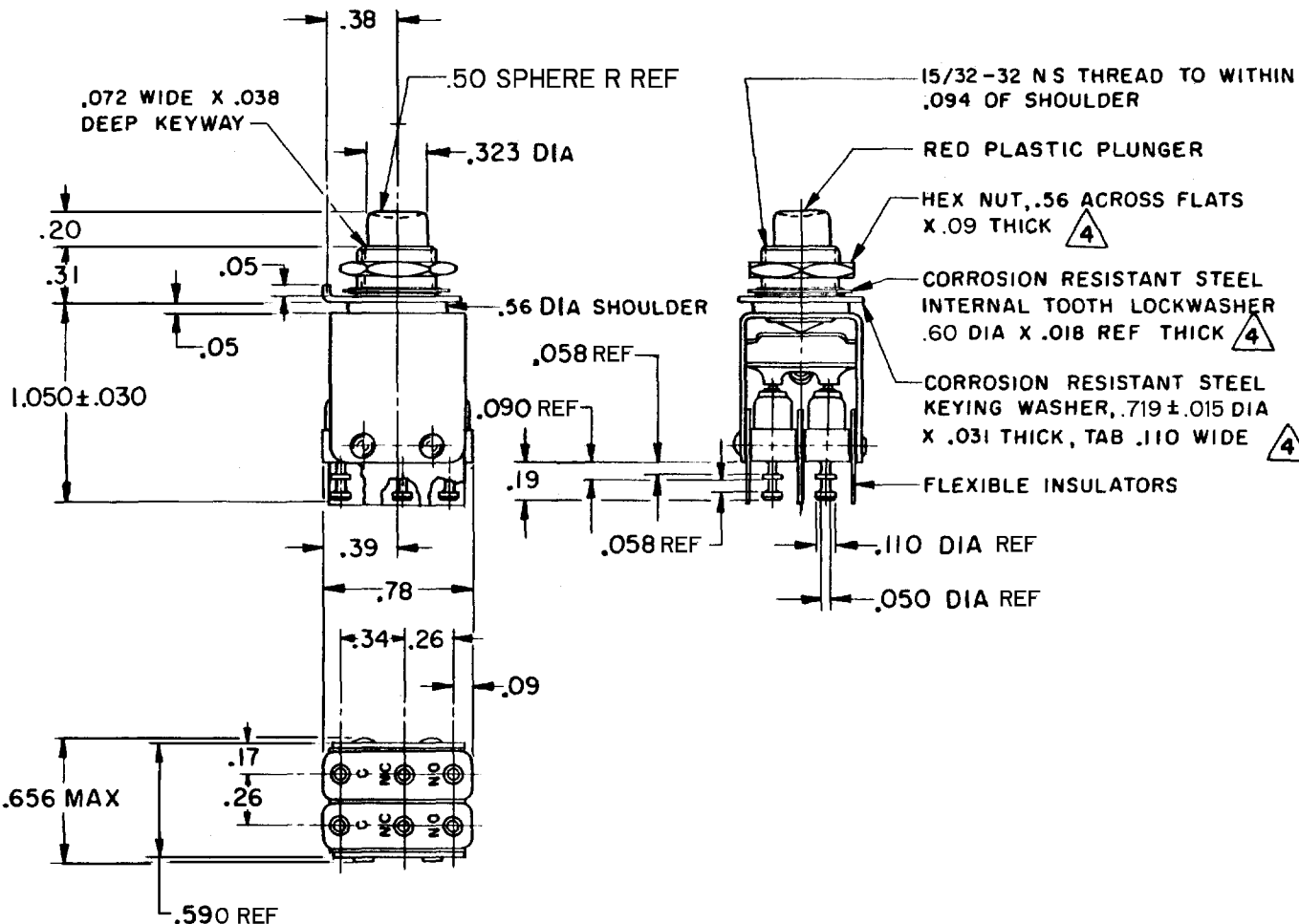
3 FEB 65

3 FEB 65

3 FEB 65

3 FEB 65

3 FEB 65



NOTES

- 1 - UNIT INCLUDES "IISM" TYPE BASIC SWITCH (2)
- 2 - TERMINALS ARE PLATED FOR SOLDERING
- 3 - SWITCHES DO NOT NECESSARILY OPERATE SIMULTANEOUSLY
- 4 - MOUNTING HARDWARE FURNISHED UNASSEMBLED

THIS DRAWING COVERS A PROPRIETARY ITEM AND IS THE PROPERTY OF MICRO SWITCH, A DIVISION OF HONEYWELL. THIS DRAWING IS NOT TO BE COPIED OR USED WITHOUT THE APPROVAL OF MICRO SWITCH.

CHARACTERISTICS

OPERATING FORCE --- 30 OZ APPROX  
 TOTAL TRAVEL --- .100 APPROX

ELECTRICAL DATA

CONTACT ARRANGEMENT  
 S P D T (2)

250 VAC --- 5 AMP  
 30 VOLTS DC RATING

INDUCTIVE --- SEA LEVEL --- 3 AMP  
 50,000 FT --- 2.5 AMP  
 RESISTIVE --- SEA LEVEL --- 5 AMP  
 50,000 FT --- 5 AMP  
 MAXIMUM INRUSH --- 24 AMP

SCALE FULL

DO NOT SCALE PRINT

UNLESS OTHERWISE NOTED  
 DIMENSIONS ARE IN INCHES

**TOLERANCES ARE:**

|             |        |       |
|-------------|--------|-------|
| ONE PLACE   | (.0)   | ±.030 |
| TWO PLACE   | (.00)  | ±.015 |
| THREE PLACE | (.000) | ±.005 |
| ANGLES      |        | ±     |

WEIGHT

FORMTEK

FO-50378

DRAWN

CHECK

28 JAN 65

CHECK