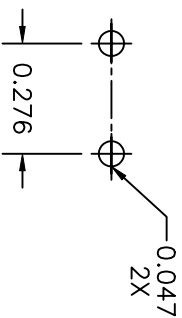
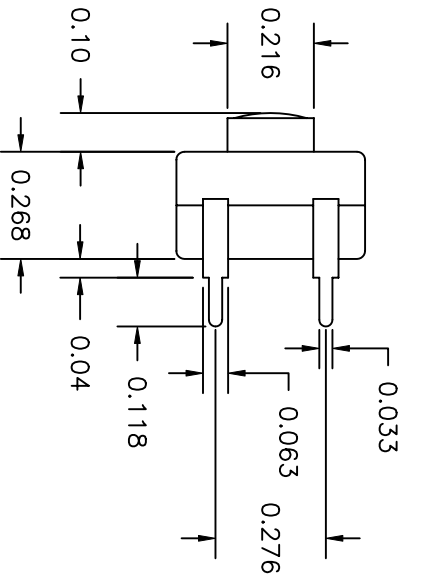
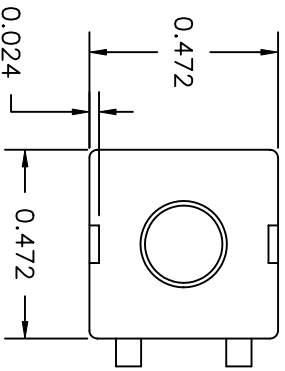
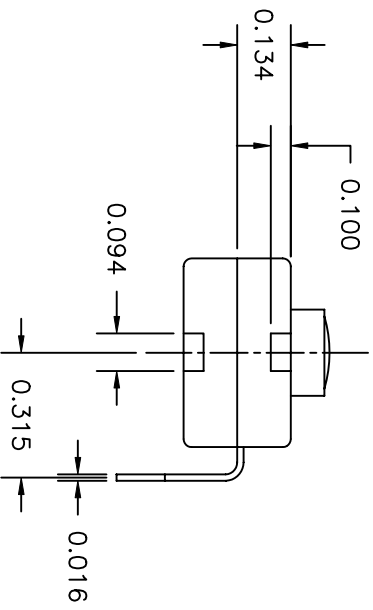


LTR	EN	DESCRIPTION	APPR	BY	DATE
A	-	INITIAL RELEASE	RB	EM	2-16-04



RECOMMENDED
MOUNTING PATTERN



JUDCO INVENTORY NO. 50-0015-00
SWITCH TYPE: PUSH BUTTON, SPST, ON-OFF
UL ELECTRICAL RATING: 12VDC, 300MA

CUSTOMER: DIGI KEY
CUST. PN: 519 PB-ND
APPROVED BY: _____
DATE: _____

DIMENSIONS IN INCHES
DIMENSIONS ARE REFERENCE

DRAWN: EM 02-16-04		TITLE HARBOR CITY CALIFORNIA	
APPR: KJ 02-16-04		OUTLINE	
1415US76A.DWG		J-977-1 SPST, 2 RA TRMS, ON-OFF	
1415-576		DWG. NO.	
SHEET		1 OF 1	

This document embodies a product, component, and/or design proprietary to JUDCO MANUFACTURING INC., and which is protected either as a trade secret, by U.S. Patent, or by copyright. It may not be used in any way without written express consent of JUDCO MANUFACTURING INC.