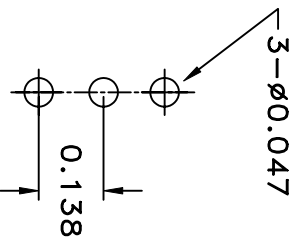
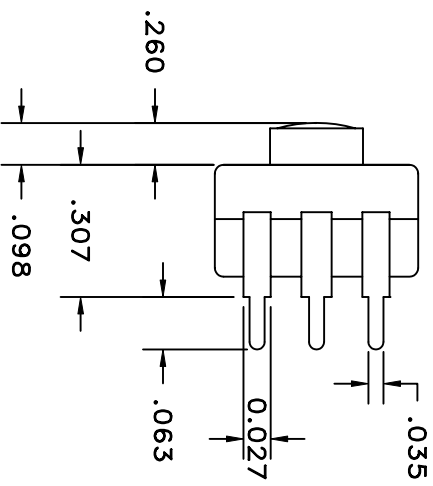
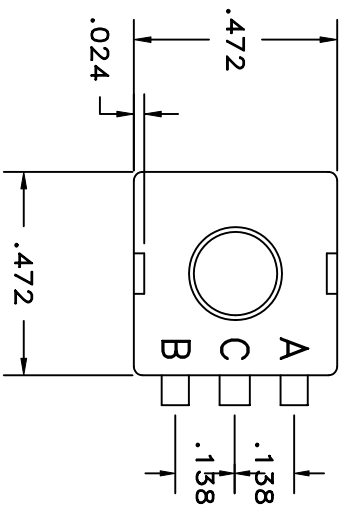
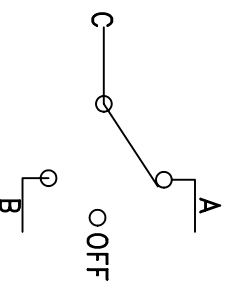
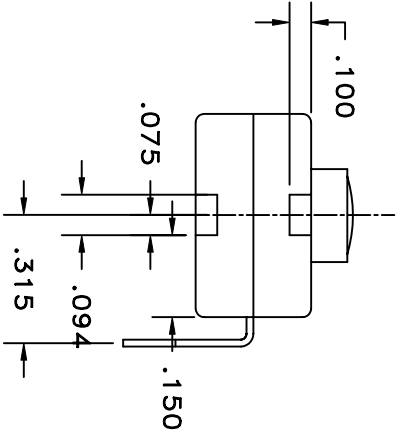


LTR	EN	DESCRIPTION	APPR	BY	DATE
A	-	INITIAL RELEASE	RB	NH	11-10-03



RECOMMENDED MOUNTING PATTERN



SCHEMATIC

JUDCO INVENTORY NO. 50-0041-00
 SWITCH TYPE: SPDT, J997-5 (ON A- OFF ON B)
 CUSTOMER NAME: DIGI-KEY

APPROVED BY: _____
 DATE: _____

DIMENSIONS IN INCHES DIMENSIONS ARE REFERENCE		
DRAWN: NH	11-10-03	
APPR: KJ	11-10-03	TITLE: MINI FLPK, J997-5 ON-OFF-ON, 3 RA TRMS DWG. NO. 1415-502 SHEET 1 OF 1
1415US02A.DWG		

This document embodies a product, component, and/or design proprietary to JUDCO MANUFACTURING INC., and which is protected either as a trade secret, by U.S. Patent, or by copyright. It may not be used in any way without written express consent of JUDCO MANUFACTURING INC.