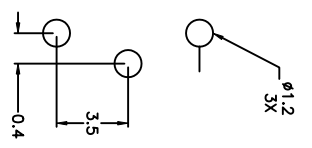
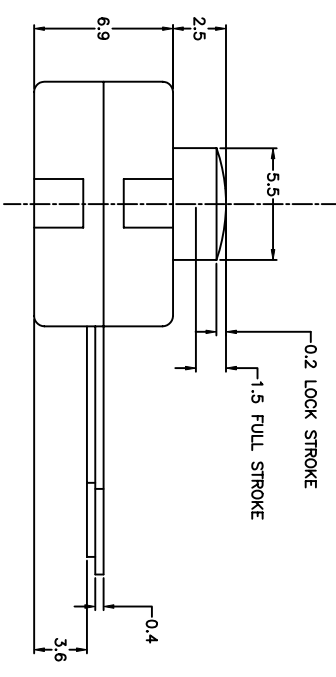
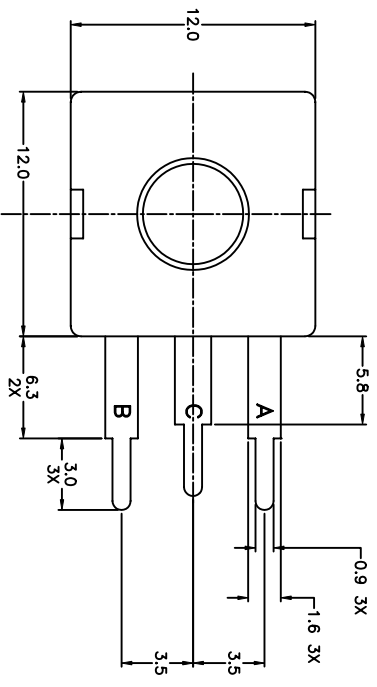
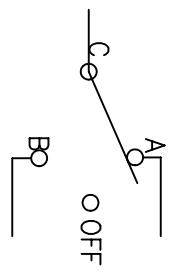
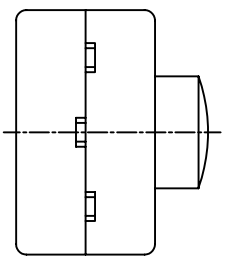


LTR	EN	DESCRIPTION	APPR	BY	DATE
A	-	INITIAL RELEASE	RB	NH	11-10-03



RECOMMENDED
MOUNTING PATTERN




SCHEMATIC

JUDCO INVENTORY NO. 50-0063-00
 SWITCH TYPE: SPDT J977-5 (ON A-OFF-ON B)
 CUSTOMER: DIGI KEY

APPROVED BY: _____
 DATE: _____

This document embodies a product, component, and/or design proprietary to JUDCO MANUFACTURING INC., and which is protected either as a trade secret, by U.S. Patent, or by copyright. It may not be used in any way without written express consent of JUDCO MANUFACTURING INC.

DIMENSIONS IN MM TOLERANCES		 HARBOR CITY CALIFORNIA MINI FLAT PACK J977-5 W/STRAIGHT TERMS
.X	±.3	
.XX	±.15	
DRAWN: NH	11-10-03	DWG. NO. 1415-503
APPR: KJ	11-10-03	SHEET 1 OF 1
1415US03A.DWG		