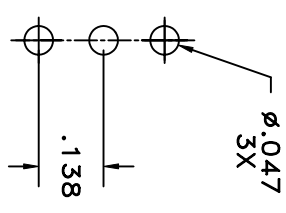
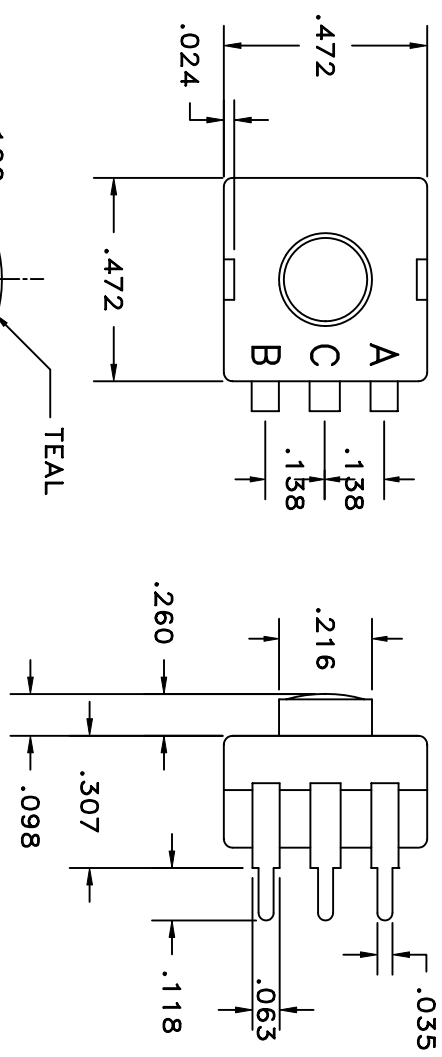
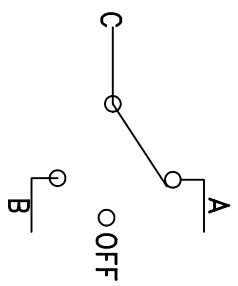
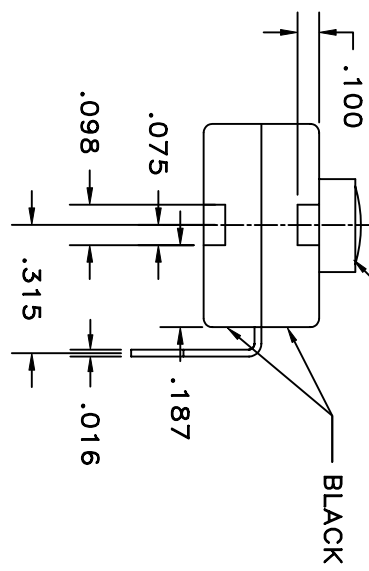


LTR	EN	DESCRIPTION	APPR	BY	DATE
A	-	INITIAL RELEASE	RB	NH	09-30-05
A1	-	ADDED CUSTOMER PART NUMBER.	RB	DC	12-20-05
A2	-	ADDED COLOR OF ACTUATOR (TEAL)	RB	DC	12-28-05



RECOMMENDED MOUNTING PATTERN



SCHEMATIC

JUDCO INVENTORY NO. 50-0088-00
 SWITCH TYPE: SPDT, J 977-8 (ON A- ON B-OFF)

CUSTOMER: DIGI-KEY
 CUSTOMER PN: 542PB-ND
 APPROVED BY: _____
 DATE: _____

This document embodies a product, component, and/or design proprietary to JUDCO MANUFACTURING INC., and which is protected either as a trade secret, by U.S. Patent, or by copyright. It may not be used in any way without written express consent of JUDCO MANUFACTURING INC.

DIMENSIONS IN INCHES DIMENSIONS ARE REFERENCE		
DRAWN: NH 09-30-05		
APPR: KJ 12-28-05	DWG. NO. 1415-862	TITLE MINI FLPK, J977-8 W/BENT TERMINALS
1415UB862A2.DWG		SHEET 1 OF 1