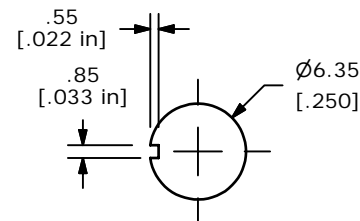
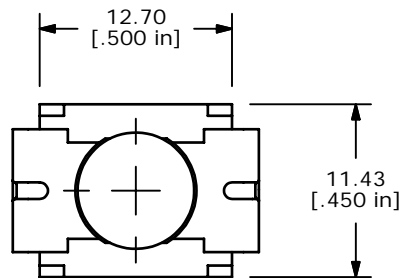
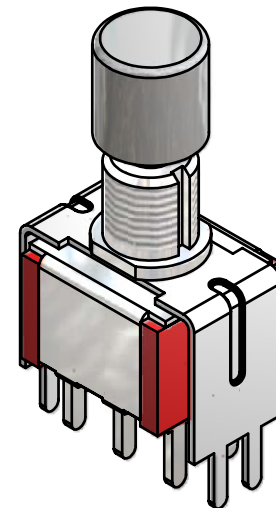


P.C.B. LAYOUT

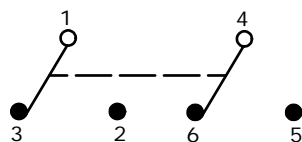


PANEL MOUNTING

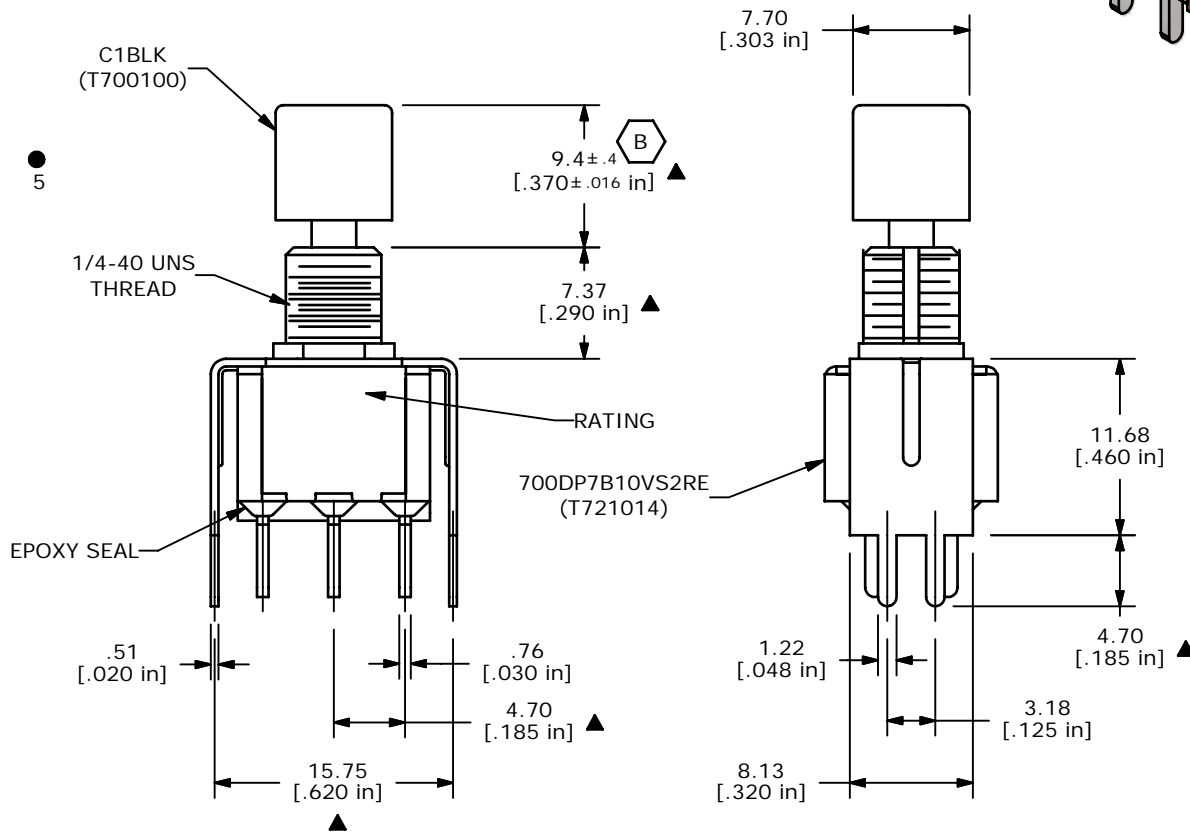


SWITCH FUNCTION	
POS. 1	POS. 2
ON	(ON)
1-3, 4-6	1-2, 4-5

() = MOMENTARY



CIRCUIT: DPDT



- NOTES:
1. DIMENSIONS IN MM [INCH]
 2. GENERAL TOLERANCE: $x.x \pm 0.4$
 $x.xx \pm 0.25$
 3. TERMINAL NUMBERS FOR REFERENCE ONLY
 4. PLATING MATERIAL: GOLD
 5. RATING: 0.4VA MAX. @ 20VAC or DC MAX.
 6. MECHANICAL LIFE: >50,000 CYCLES
 7. INSULATION RESISTANCE: 1000M OHMS MIN.
 8. DIELECTRIC STRENGTH: 1,000V RMS @ sea level
 9. OPERATING TEMPERATURE: -30°C to 85°C
 10. ▲ DENOTES CRITICAL PARAMETER
 11. 2002/95/EC (ROHS) COMPLIANT

E-SWITCH®

B	16315	CHANGED "8.73" DIM. TO "9.4"	8/15/06	BO
A	16167	NEW PART RELEASE	6/21/06	CT
REV	PCR NO	DESCRIPTION	DATE	BY

TITLE 700DP7B10VS2REC1BLK				
SCALE 2:1	DATE 6/21/2006	DR CT	DWG XT0137P	REV B

THE INFORMATION CONTAINED IN THIS DOCUMENT IS PROPRIETARY TO E-SWITCH AND IS NOT TO BE COPIED OR TRANSFERRED