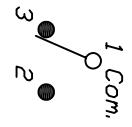


RECOMMENDED P.C.B. LAYOUT
NOT TO SCALE



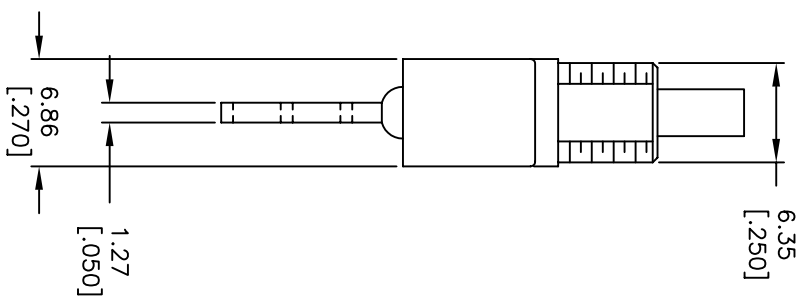
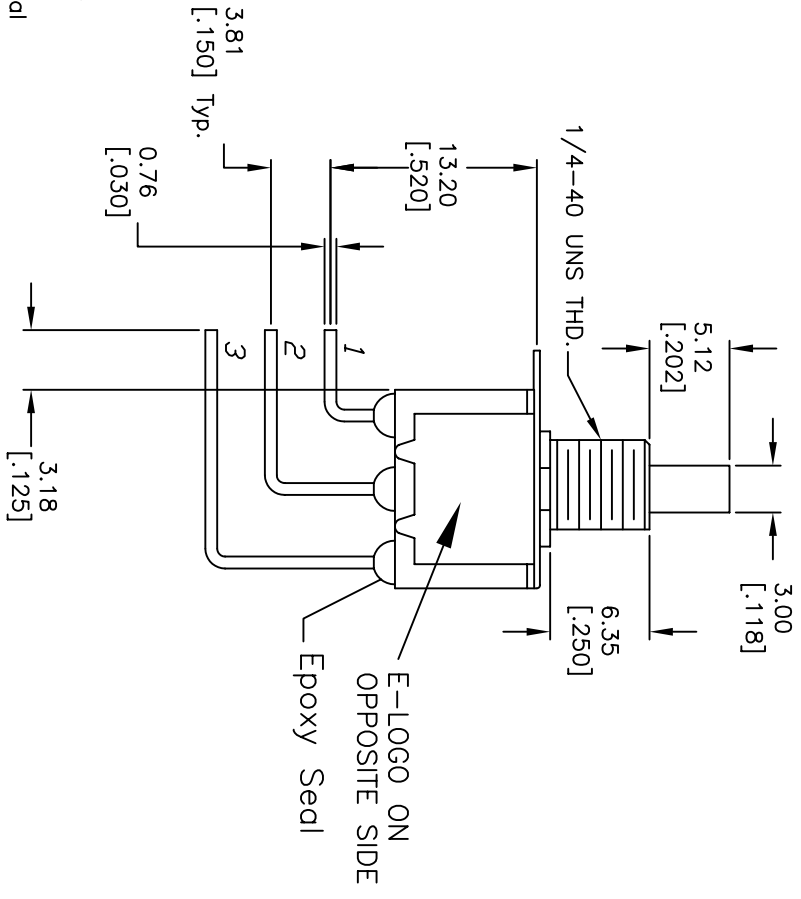
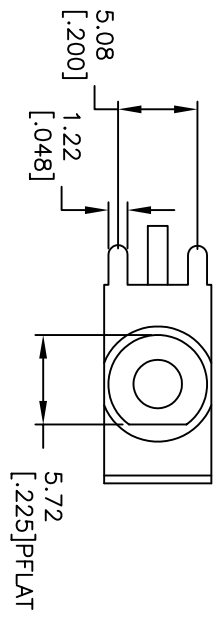
CIRCUIT: SPDT

SWITCH FUNCTION	
DN	(DN)
1-3	1-2

() = MOMENTARY

NOTES:

1. ALL DIMENSIONS IN MM [INCH]
2. GENERAL TOLERANCE: X.X=±0.4
X.XX=±0.25
3. TERM. NOS. FOR REF. ONLY
4. RATING: 3A @120V AC
1A @250V AC
5. MATERIAL: FIXED TERMINAL & MOVING CONTACT
Copper Alloy w/Silver plate
6. CONTACT RESISTANCE: 10mILLI Ohms max initial
@2-4VDC, 100ma for AG & AU
7. ELECTRICAL LIFE: 50,000 make-and-break
cycles at full load.
8. INSULATION RESISTANCE: 1,000M ohm min.
9. DIELECTRIC STRENGTH: 1000V RMS @sea level
10. OPERATING TEMP.: -30°C to 85°C
11. ▲ DENOTES CRITICAL PARAMETER.



E-SWITCH®

700SP7B11M7QE

REV.	ECN No.	DESCRIPTION	DATE	CHKD
B	16058	UPDATE DIMENSIONS	5/30/06	CT
A	13413	RELEASED FOR PRODUCTION	8/29/03	AR

TITLE	SCALE	DATE	DR	DWG	REV
700SP7B11M7QE	2:1	8/29/03	AR	T711045	B

THE INFORMATION CONTAINED IN THIS DOCUMENT IS PROPRIETARY TO E-SWITCH AND IS NOT TO BE COPIED OR TRANSFERRED