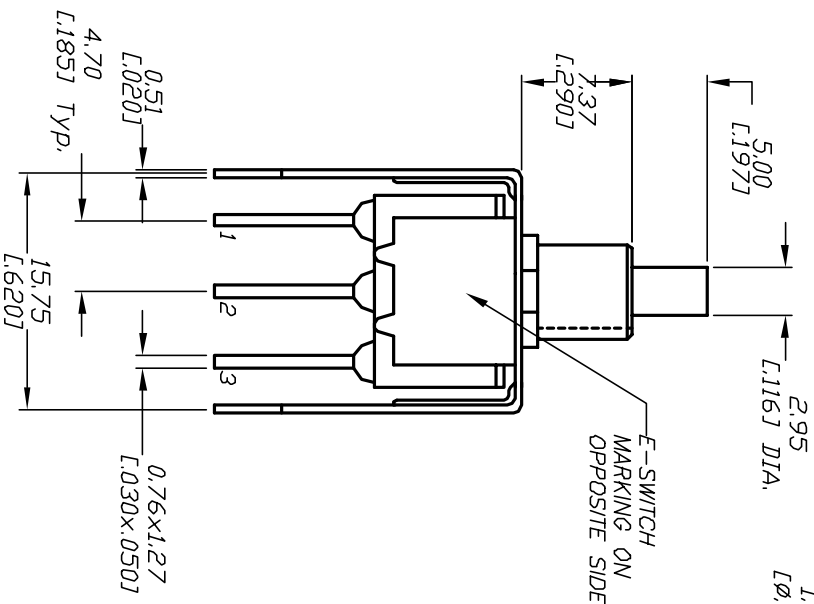
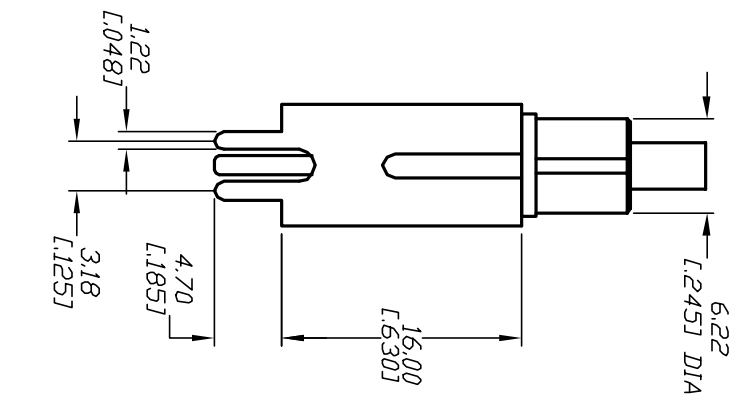
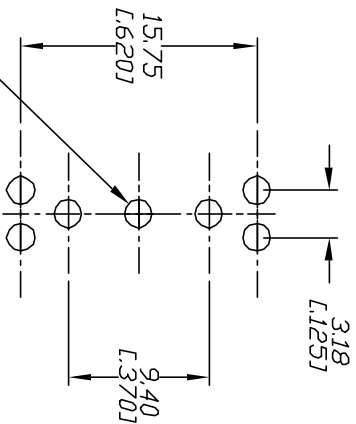
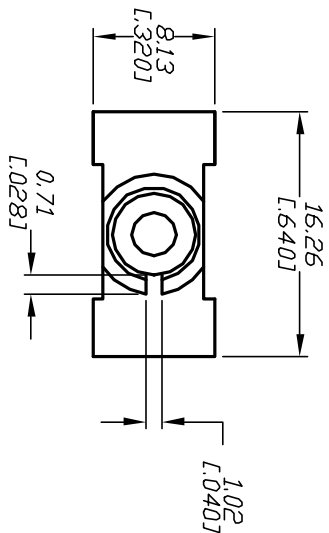


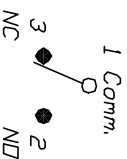
NOTES:

1. ALL DIMENSIONS IN MM [INCH]
2. GENERAL TOLERANCE: X.X=±0.4
X.XX=±0.25
3. TERM. NDS. FOR REF. ONLY
4. RATING: 3A @120VAC or 28VDC
1A @250VAC
5. FIXED TERM. & MOVING CONTACT:
Copper Alloy w/Silver plate
6. CONTACT RESISTANCE: 10mILLI-ohms initial
@2-4VDC
7. ELECTRICAL LIFE: 50,000 make-and-break
cycles at full load.
8. INSULATION RESISTANCE: 1,000M ohm min.
9. DIELECTRIC STRENGTH: 1000V RMS @sea level
10. OPERATING TEMP.: -30°C to +85°C



E-SWITCH
MARKING ON
OPPOSITE SIDE

RECOMMEND P.C.B. LAYOUT



CIRCUIT: SPDT

CONTACT CONFIGURATION

SWITCH FUNCTION	(DN)
DN	(DN)
1-3	1-2

< >=Momenary

C	12861	REVISE NOTE 4, ADD MATERIAL	2/28/03	CB
B	10914	TITTLE: VS3 Q WAS VS2 R		
A	10572	RELEASED FOR PRODUCTION	3/21/00	MM
REV.	ECN NO.	DESCRIPTION	DATE	CHKD

TITLE		700 SP-7 B20 VS3 Q E	
SCALE	DATE	DR	DWG
2:1	3/21/00	MM	T711021
E-SWITCH®		REV	C

THE INFORMATION CONTAINED IN THIS DOCUMENT IS PROPRIETARY TO E-SWITCH AND IS NOT TO BE COPIED OR TRANSMITTED