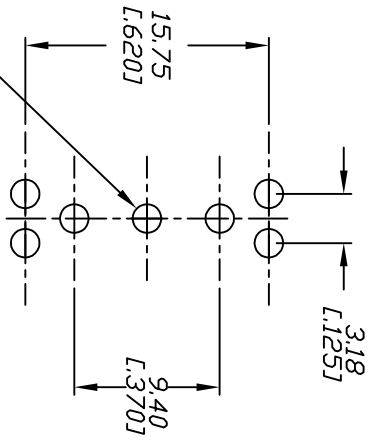
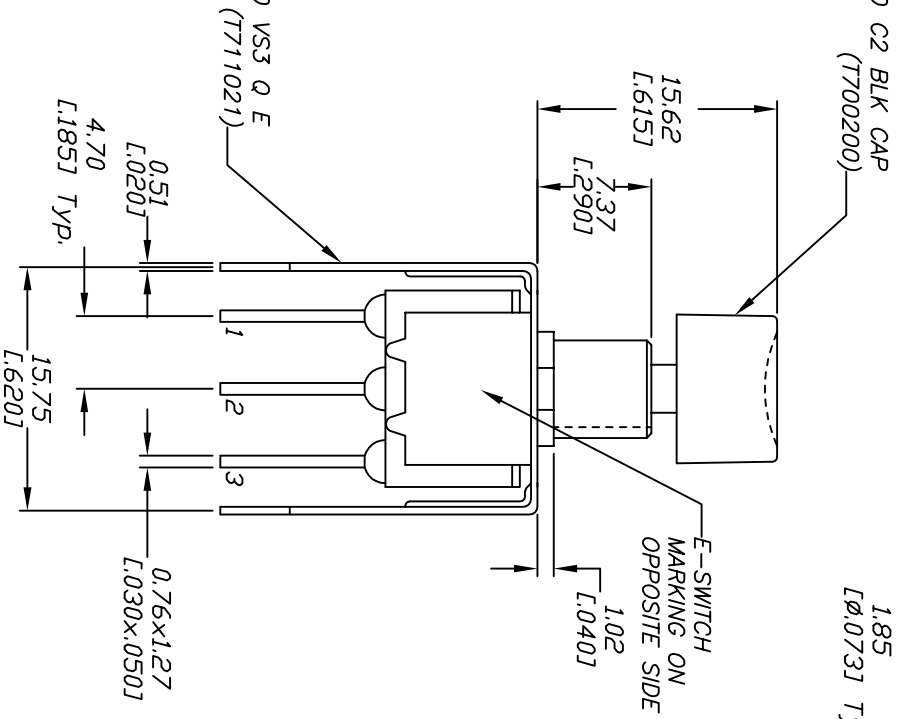
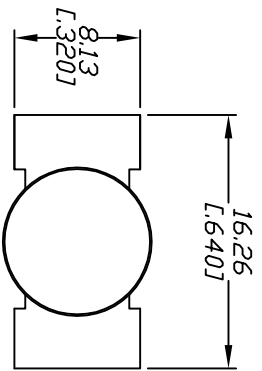
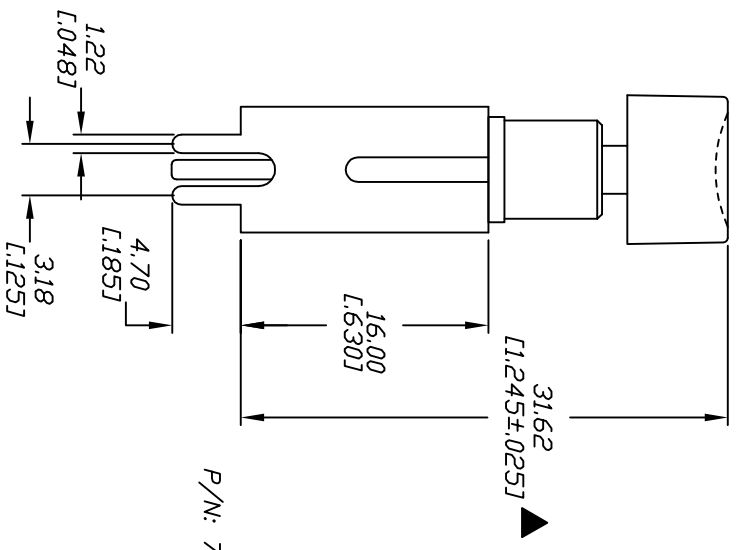
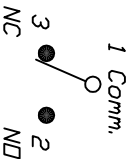


NOTES:

1. ALL DIMENSIONS IN MM [INCH]
2. GENERAL TOLERANCE: 0.0=±0.4
0.00=±0.25
3. TERM. NOS. FOR REF. ONLY
4. RATING: 1A @120VAC or 28VDC.
5. ELECTRICAL LIFE: 50,000 make-and-break cycle at full load.
6. INSULATION RESISTANCE: 1,000M ohm min.
7. DIELECTRIC STRENGTH: 1,000 V RMS @sea level.
8. OPERATING TEMP.: -40°C to 85°C.
9. ▲ DESIGNATE MAJOR DIMENSIONS.



RECOMMENDED PCB LAYOUT



CIRCUIT: SPDT CONTACT CONFIGURATION

SWITCH FUNCTION	
DN	<DN>
1-3	1-2

< >=MOMENTARY

REV.	ECN No.	DESCRIPTION	DATE	CHKD
A	10697	RELEASED FOR PRODUCTION	6/20/00	MM

TITLE		SCALE		DATE		DR		DWG		REV	
700 SP-7 B20 VS3 Q E /C2 BLK CAP		2:1		6/20/00		MM		XT0074P		A	

THE INFORMATION CONTAINED IN THIS DOCUMENT IS PROPRIETARY TO E-SWITCH AND IS NOT TO BE COPIED OR TRANSFERRED