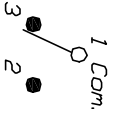
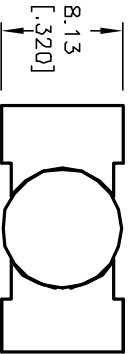


RECOMMENDED PCB LAYOUT
SCALE 2X



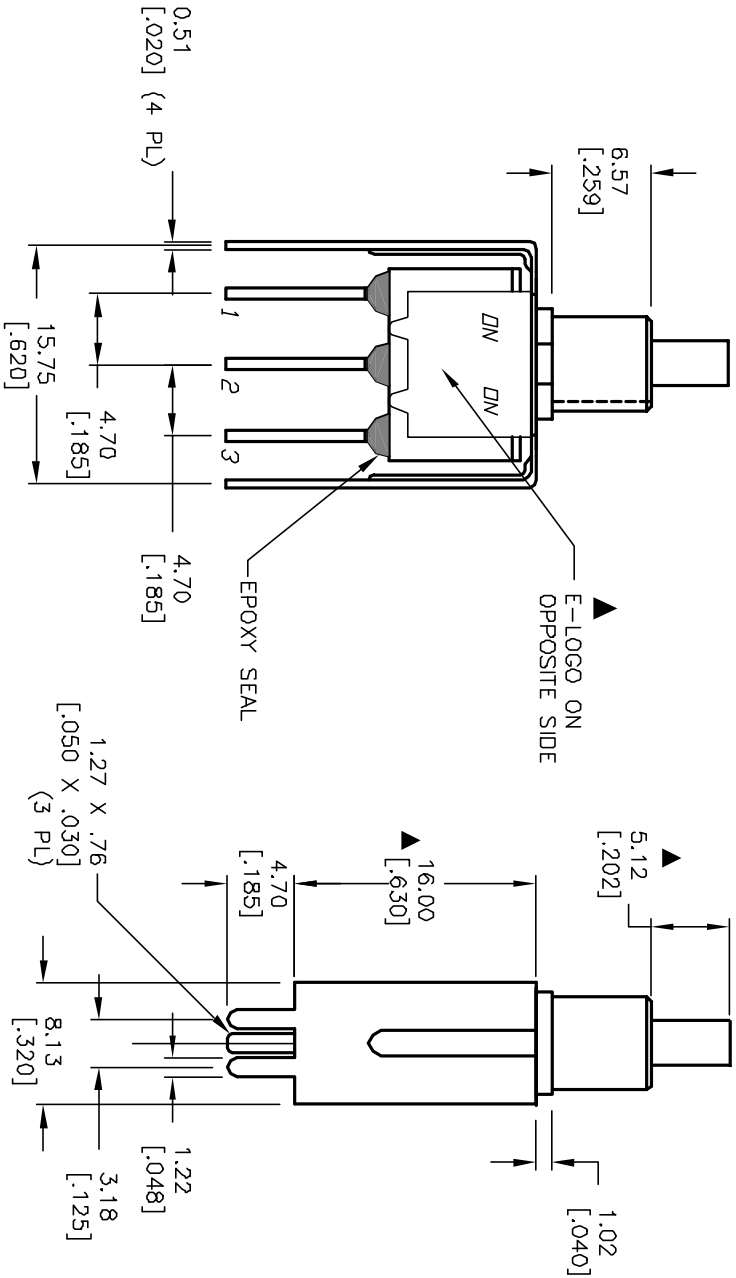
CIRCUIT: SPDT

SWITCH FUNCTION	
DN	(DN)
1-3	1-2

() = MOMENTARY

NOTES:

1. ALL DIMENSIONS IN MM [INCH]
2. GENERAL TOLERANCE: X.X=±0.4
X.XX=±0.25
3. TERM. NOS. FOR REF. ONLY
4. RATING: 0.4VA MAX. @20V MAX AC OR DC
5. FIXED TERM. & MOVING CONTACT:
Copper Alloy w/Gold plate over nickle plate
6. CONTACT RESISTANCE: 20mILLI-ohms initial
@2-4VDC
7. ELECTRICAL LIFE: 50,000 make-and-break
cycles at full load.
8. INSULATION RESISTANCE: 1,000M ohm min.
9. DIELECTRIC STRENGTH: 1000V RMS @sea level
10. OPERATING TEMP.: -30°C to 85°C
11. ▲ DENOTES CRITICAL PARAMETER.



E-SWITCH®

A		13218	RELEASED FOR PRODUCTION	6/16/03	AR	TITLE		700SP7B20VS3RE	DR	AR	DWG	T711044	REV	A	
REV.	ECN No.	DESCRIPTION		DATE	CHKD	SCALE	2:1	DATE	6/16/03	DR	AR	DWG	T711044	REV	A

THE INFORMATION CONTAINED IN THIS DOCUMENT IS PROPRIETARY TO E-SWITCH AND IS NOT TO BE COPIED OR TRANSFERRED