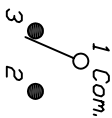


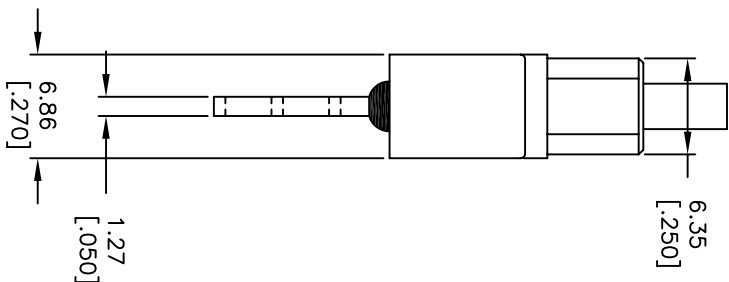
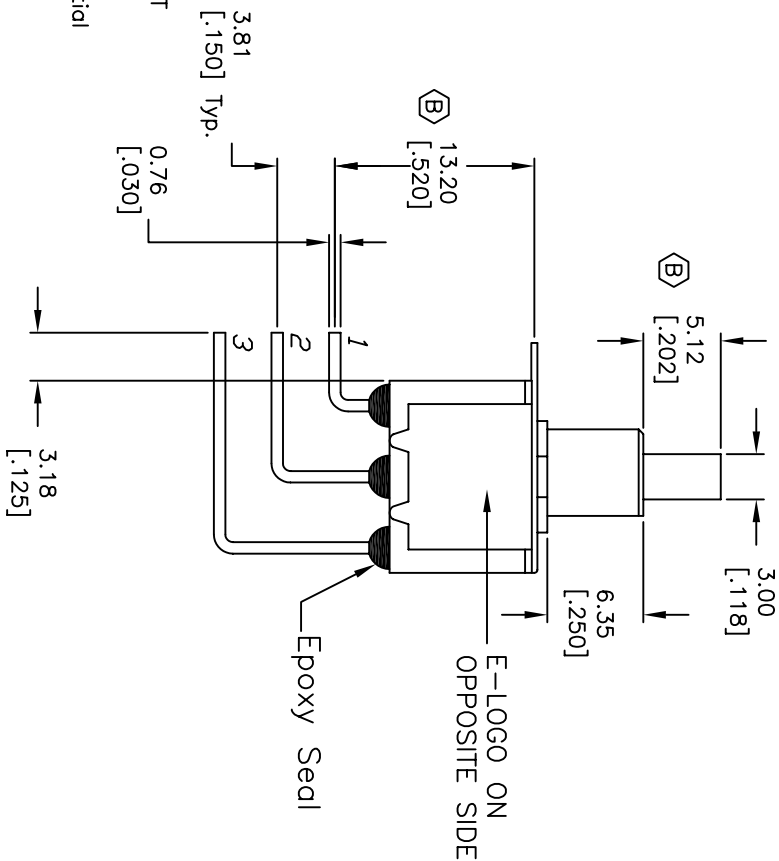
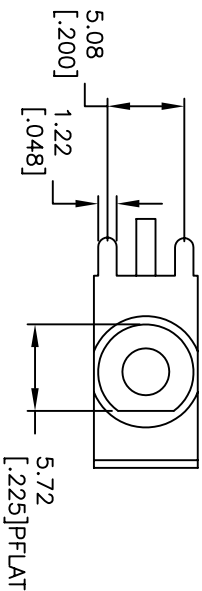
RECOMMENDED P.C.B. LAYOUT
NOT TO SCALE



CIRCUIT: SPDT

SWITCH FUNCTION	
DN	(DN)
1-3	1-2

() = MOMENTARY



- NOTES: GENERAL TOLERANCE: X.X=±0.4
X.XX=±0.25
- ALL DIMENSIONS IN MM [INCH]
 - TERM. NOS. FOR REF. ONLY
 - RATING: 0.4(VA) max. @20V (AC or DC)
 - MATERIAL: FIXED TERMINAL & MOVING CONTACT
Copper Alloy w/GOLD plate over
Nickel plate
 - CONTACT RESISTANCE: 10mILLI Ohms max initial
@2-4VDC, 100mA for AG & AU
 - ELECTRICAL LIFE: 50,000 make-and-break
cycles at full load.
 - INSULATION RESISTANCE: 1,000M ohm min.
 - DIELECTRIC STRENGTH: 1000V RMS @sea level
 - OPERATING TEMP.: -30°C to 85°C

REV.	ECN No.	DESCRIPTION	DATE	CHKD	SCALE	DATE	DR	DWG	REV
D	15372	CHANGED DIM TO 3.18 FROM 3.81	10/7/05	PH	TITLE 700 SP-7 B21 M7 RE (GOLD CONTACTS)	DATE	DR	T711037	D
C	15232	CHANGED DIM FROM 12.7 TO 13.2	9/1/05	PH					
B	13971	CHANGE DIMS	4/28/04	AR					
A	12365	REVISED AND REDRAWN	--	--					
THE INFORMATION CONTAINED IN THIS DOCUMENT IS PROPRIETARY TO E-SWITCH AND IS NOT TO BE COPIED OR TRANSMITTED									

E-SWITCH®