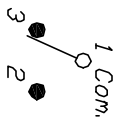
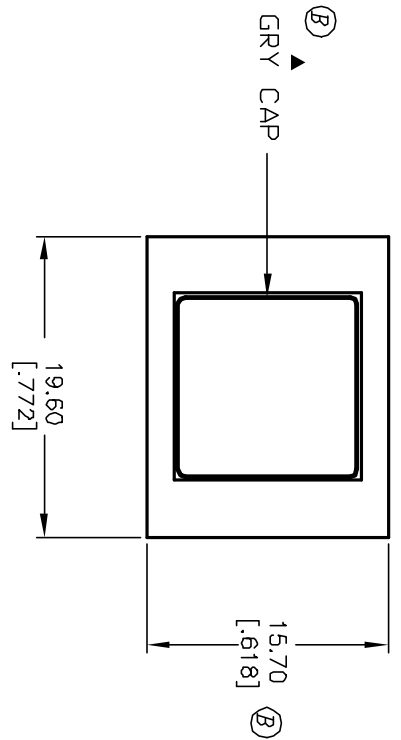


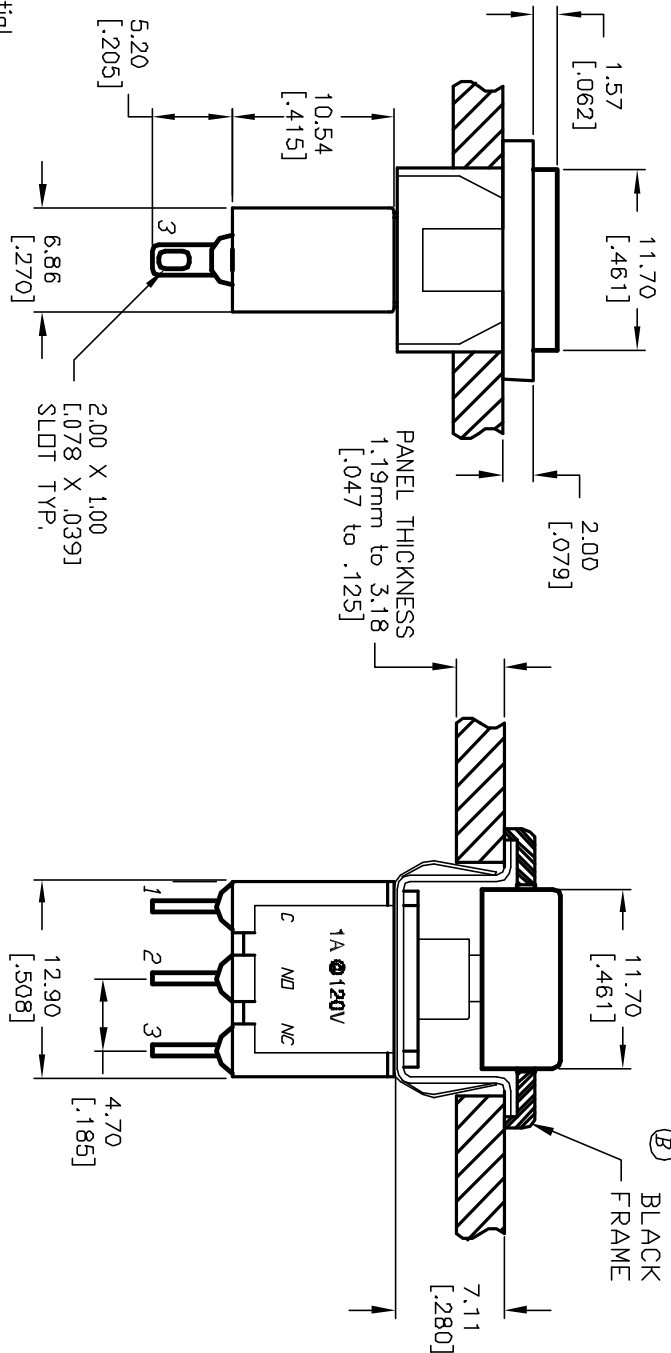
RECOMMENDED PANEL LAYOUT
SCALE 1:1



CIRCUIT: SPDT

SWITCH FUNCTION	
DN	<DN>
1-3	1-2

< > = MOMENTARY



NOTES:

1. ALL DIMENSIONS IN MM [INCH]
2. GENERAL TOLERANCE: X.X=±0.4 X.XX=±0.25
3. TERM. NOS. FOR REF. ONLY
4. RATING: 1A @120VAC or 28VDC
5. FIXED TERM. & MOVING CONTACT: Copper Alloy w/Silver plate
6. CONTACT RESISTANCE: 10mILLI-ohms initial @2-4VDC
7. ELECTRICAL LIFE: 50,000 make-and-break cycles at full load.
8. INSULATION RESISTANCE: 1,000M ohm min.
9. DIELECTRIC STRENGTH: 1000V RMS @sea level
10. OPERATING TEMP.: -30°C to 85°C

REV.	ECN No.	REVISION/ ADD NOTES 5-10	DESCRIPTION	DATE	CHKD	TITLE	SCALE	DATE	DR	DWG	REV
B	11535	REVISED/ ADD NOTES 5-10	700 SP-7 M1 Q E APP2 (BLK/GRY)	8/9/01	CJB	E-SWITCH®	2:1	8/9/01	CB	T721011	B
<p>THE INFORMATION CONTAINED IN THIS DOCUMENT IS PROPRIETARY TO E-SWITCH AND IS NOT TO BE COPIED OR TRANSFERRED</p>											