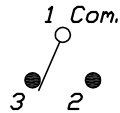
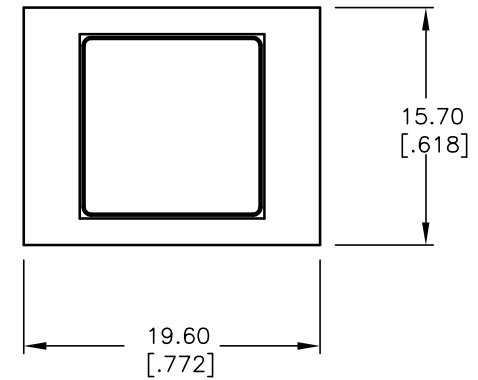


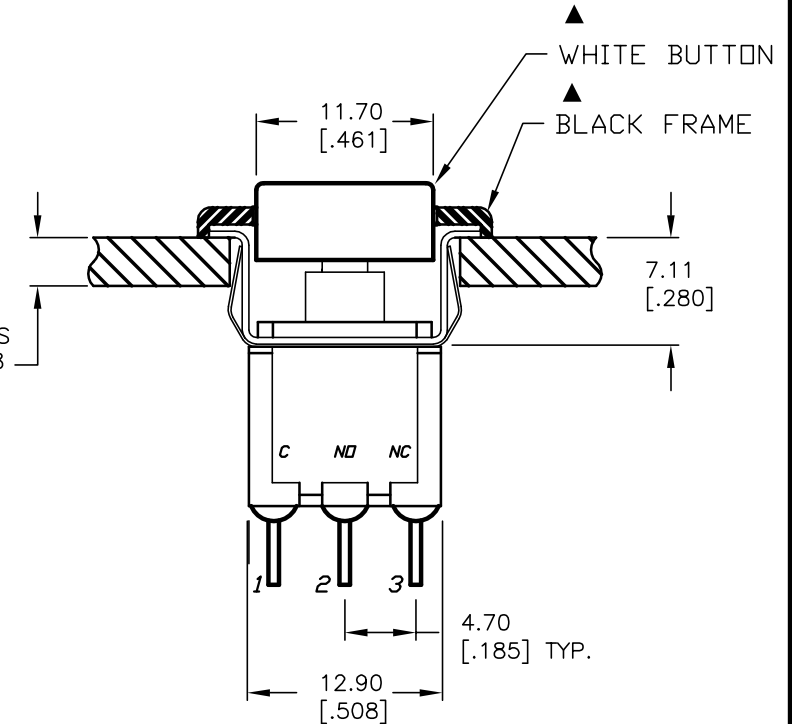
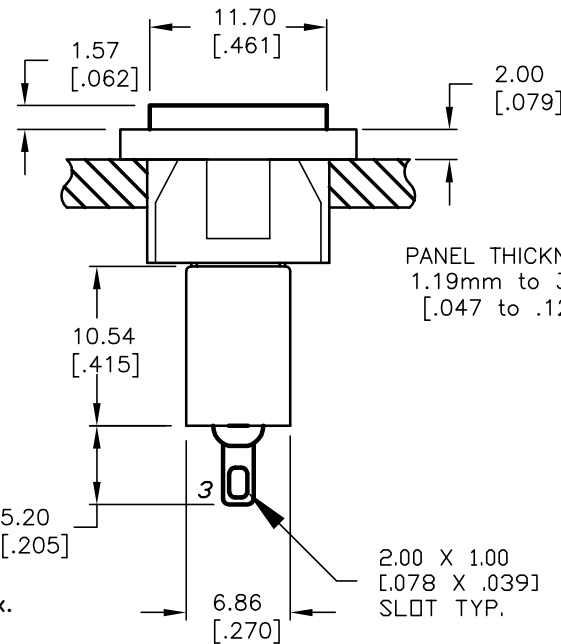
RECOMMENDED PANEL LAYOUT
SCALE 1:1



CIRCUIT: SPDT

SWITCH FUNCTION	
DN	<DN>
1-3	1-2

() = MOMENTARY



NOTES:

1. ALL DIMENSIONS IN MM [INCH]
2. GENERAL TOLERANCE: X.X=±0.4
X.XX=±0.25
3. TERM. NOS. FOR REF. ONLY
4. RATING: 0.4VA @ 20VAC OR 28VDC max.
- ▲ 5. FIXED TERM. & MOVING CONTACT:
Copper Alloy w/Gold plate over Nickel plate
6. ELECTRICAL LIFE: 50,000 make-and-break cycles at full load.
7. INSULATION RESISTANCE: 1,000M ohm min.
8. DIELECTRIC STRENGTH: 1000V RMS @sea level
9. OPERATING TEMP.: -30°C to 85°C

E-SWITCH®

TITLE

700SP7M1REAP2WHTBLK

A	14303	RELEASED FOR PRODUCTION	9/9/04	AR
REV.	ECN No.	DESCRIPTION	DATE	CHKD

THE INFORMATION CONTAINED IN THIS DOCUMENT IS PROPRIETARY TO E-SWITCH AND IS NOT TO BE COPIED OR TRANSFERRED

SCALE

2:1

DATE

9/9/04

DR

AR

DWG

T711014

REV

A