

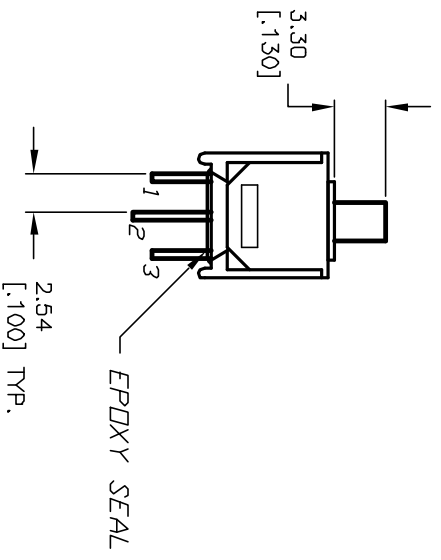
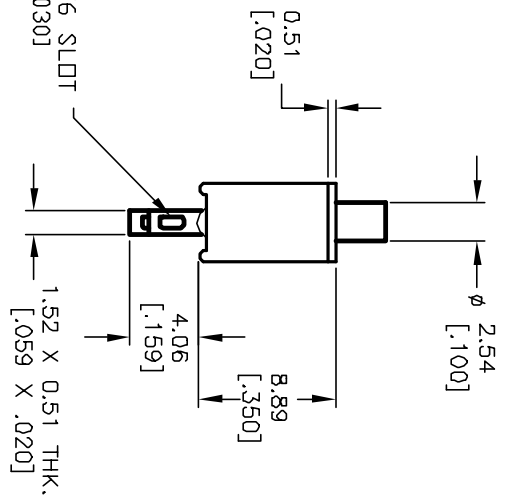
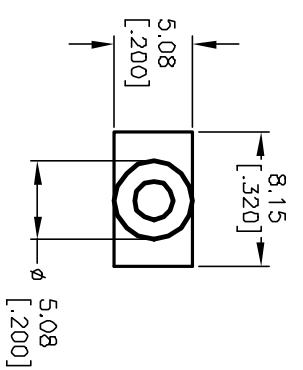
CIRCUIT: SPDT

SWITCH FUNCTION
DN <DN>
2-1 2-3

< > =MOVEMENTARY

NOTES:

1. ALL DIMENSIONS IN MM [INCH]
2. GENERAL TOLERANCE: X.X=±0.4 X.XX=±0.25
3. TERM. NOS. FOR REF. ONLY
4. RATING: 0.4VA max. @20VAC or DC.
5. FIXED TERM. & MOVING CONTACT:
Copper Alloy w/GOLD plate over NICKEL plate.
6. CONTACT RESISTANCE: 20mILLI-ohms initial @2-4VDC.
7. ELECTRICAL LIFE: 60,000 make-and-break cycles at full load.
8. INSULATION RESISTANCE: 1,000M ohm min.
9. DIELECTRIC STRENGTH: 1000V RMS @sea level
10. OPERATING TEMP.: -30°C to 85°C



REV.	ECN No.	DESCRIPTION	DATE	CHKD
A	12035	RELEASED FOR PRODUCTION	4/3/02	CJB

TITLE		SCALE		DATE	DR	DWG	REV
800 SP-8 B10 M1 R E (GOLD CONTACTS)		2:1		4/3/02	CB	T822022	A

E-SWITCH®

THE INFORMATION CONTAINED IN THIS DOCUMENT IS PROPRIETARY TO E-SWITCH AND IS NOT TO BE COPIED OR TRANSFERRED